

# Peter Swingler's handpainted thimbles 1968-2014

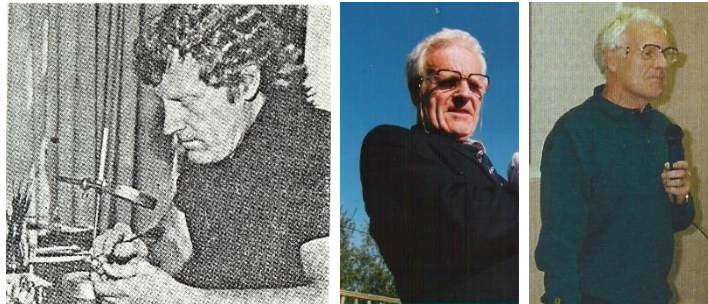
Birmingham England

I have undertaken two previous British enamelled thimbles topics – Crummles and Graham Payne handpainted thimbles, which includes his enamelled range. I have always shied away from featuring Peter Swingler's thimbles: I had never even handled one of his treasured creations - never mind owning one.

Working with over 1100 photos that are now included here is such a treat.

Lydia Hamilton has inspired me to bring this topic to life, with her love and interest in Peter's creations.

Swingler's thimbles are different from those of Crummles and Payne. Their thimbles are of enamelling on brass and there were several handpainters employed in the creation of their range. Swingler was a vitreous enameller and a freehand painter. He alone painted the enamelled miniature portraits on sterling silver blank thimbles. Peter's miniature painting is so fine that it was accomplished only with the use of a magnifying glass.



L: working with a magnifier – C: Peter supplied by the Swinglers - R: Peter Swingler 1999

Swingler was born in England in 1937. According to Zalkin, Swingler began handpainting thimbles in 1973: other sources name 1972 or 1975. The 1969 thimbles of the Investiture of Prince Charles should be his earliest, but it is unclear when these thimbles were painted.

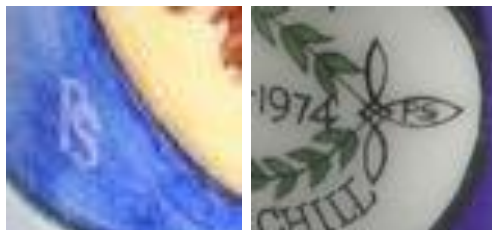
Peter died in August 2015 and in that period of over forty years, his output was prodigious, even tho his thimble editions were small.

Zalkin described Swingler's thimble enamelled painting: 'In his method, each colour used to decorate the thimble must be fired in a kiln separately, requiring firing as many times as there are different colours used.'

This could be done for seven or eight times. Flux, a colourless glass, was then applied to protect the enamel, which was again fired. What a painstaking procedure. For the most elaborate of his creations, it would have taken him up to eight hours to complete one thimble.

According to Norma Spicer, Swingler worked with Birmingham's James Swann & Son (JS&S) from 1969, painting his enamelled thimbles on their plain sterling silver thimbles. The JS&S registered mark, with the hallmark, will be found in either of two places – on the outer rim (when the enamelling doesn't reach the rim) or up in the apex when it does. These thimbles tend to have the scenes painted all round.

It was during this period that Swingler seems to have signed his thimbles with 'PS' – look for his signature almost hidden in the design of his enamelled thimbles.



signed 'PS' – mainly used on the JS&S sterling silver thimbles

After a few years Swingler used sterling silver thimbles with his own Birmingham registered sterling silver mark. Tho the thimbles bear the mark of PS, the blank thimbles were still made for him for enamelling, by JS&S. According to an article in *Thimble Talk* about Swingler in January 1984, this was in 1975.

When the enamelling covers most of the outer thimble, look for his mark inside on the rim or up in the apex. They are die struck in the flat and then pulled round to form the thimble and the join is then soldered. The top or apex is then soldered on.

Swingler used whatever assayed thimbles were to hand.



Peter Swingler's Birmingham registered sterling silver mark – P and S in separate diamond shapes  
C: hallmark on inner rim – R: marks up in apex with additional lettering 'Made in England'

PS hallmarked thimbles are taller, and the enamelling is done on two roundels on an enamelled ground. Often the roundel is of white enamelling with identifying lettering. These are separated by applied beautiful silverwork.

He switched to using the full form of his name.

According to Shaneyfelt, the date was occasionally included next to the signature.

As a miniaturist, Swingler perfected painting portraits of people rather than scenes and buildings.



Peter Swingler's full signature – R: short signature  
the majority of thimbles have the long signature – so not recorded here

Once Peter retired, he accessed blank sterling thimbles from both Andy Poole (AJP) and Gladman & Norman (G&N) - both of Birmingham. He retired from painting thimbles in around 2002, when he moved from Birmingham to live in Ottery St Mary, in Devon. He was persuaded by collectors to come out of retirement in 2005 and was still painting thimbles in 2014.



AJP - G&N

Peter produced the Kings and Queens of England sets and sets of Presidents of America, almost simultaneously. When thimble collection of the late Mary Cruwys, went up for auction by Bleasdales Limited in 2016, it included a thimble set of the Presidents of America, as well as a letter from Swingler to Mary.

A set of Mary's Kings and Queens of England set sold at the July 2017 Bleasdales Limited auction.

Swingler undertook personal commissions, which were one-off creations.

In spring 1978, thimbles could be commissioned to order thru Roz Belford's *The Sewing Circle*.

In winter 1983, Belford again offered this service to collectors with the following options:

1. They supply a clear facial close-up photo, with colour of hair, eyes, clothing, allowing 8-10 weeks for delivery
2. a choice of the colour of the background enamelling
3. the preferred design on the name roundel (flowers, leaves etc)

Until recently when I had encountered a number up in the apex of a Swingler thimble with his mark, I had presumed they were thimble size numbers. I think they indicate the **edition number** of the thimble in any one series.

The thimbles hallmarked with JS&S marks have the thimble **size** number on the band.

You will also notice how varied are the apexes of the sterling silver thimbles used.

The most decorative are the set of the Kings and Queens of England, which have an enamelled, domed apex.

For special commemoratives, like the wedding of Prince Charles and Lady Diana Spencer, there is a special raised decoration on the apex.



The sterling silver side panels on Swingler thimbles are striking and elaborate.





these two side panels have identical patterning

L: 1976 - R: 2005

the patterning is less crisp as the thimble dies aged.

In all the literature and sales catalogues, I have only encountered a few references to the dimensions or weight of the Swingler designed sterling silver thimbles i.e. height: 1<sup>1/8</sup> ins (28.5mm). This is for one of the taller domed thimbles. In a recent ebay listing, the weight is given as 14.3-15 grams.

In 2021 I stumbled across the first advertisements for Swingler thimbles in *The Thimble Guild* catalogues, as late as 1995. They were offered as a (valuable) first prize in their monthly draws on three occasions. I will record this with the thimbles I encountered there.

Was your Swingler thimble sold in a cardboard thimble box? This is what one looked like – with the lettering on the inner lid of the box 'Enamelled Hand Painted Sterling Silver Thimble'. The name Swingler does not appear here.



If you are a member of Thimble Collectors International (TCI), please read Linda Shaneyfelt's excellent article on her collection of Swingler thimbles in the fall 2009 *TCI Bulletin*, which is illustrated in full colour. Linda went on to share her love of Swingler thimbles with her presentation to the 2010 TCI Convention in downtown Cincinnati. Thru research for both the article and her talk, Linda had contact with Maureen and Peter Swingler who were generous with their time.

To quote Shaneyfelt, in contact with Peter Swingler - 'According to his estimates, he has painted around 2500 and 3000 thimbles over the last forty years.'

As thimble collectors, we tend to think of Swingler only in terms of thimbles. His profession was as an enameller and handpainter of Masonic regalia and jewellery, which would have included fine miniature work, including portraits and he continued with this while then taking thimble commissions.

Swingler was a guest speaker at the Dorset Thimble Society in 1999 and showed examples of his thimbles. He also displayed other examples of his enamelled work viz. Masonic badges – teaspoons serviette rings – boxes. Shaneyfelt adds dressing table sets and compacts to the list.

I have removed enamelled thimbles initially thought to be painted by Swingler. These include Anne Hathaway's cottage - Buckingham Palace – Edinburgh Castle - Houses of Parliament Worcester Cathedral.

They have the painter's initials of CH for Chris Harmer, who also painted enamelled thimbles for JS&S. They have previously been ascribed to PS, who as it becomes more evident, only painted buildings on private commission.

I have found at least two other examples of handpainted enamelled thimbles ascribed to Swingler that have the painter's initials of 'CH' or 'C Harmer' clearly embodied in the enamelled design e.g., 'Adventures of Tom Sawyer 1876-1976' and 'To the Bride 1977'. **Buyer beware.**





I have arranged the thimbles by their name or topic, rather than by the date they were created, using the lettering/name on his thimbles. Each thimble was handpainted, so I will include all examples that I have found – until it becomes impractical!! Images of the thimbles in the round will really show us the true artistry of this magnificently talented man.  
 I have grouped all 'Birds' together, and all 'Pets' and all 'Personalised', rather than separating them by individual names as the rest.

for other enamelled thimbles topics see

- British modern enamelled thimbles
- Cornish Enamels thimbles
- Crummles enamel thimbles
- Graham Payne handpainted thimbles

### Alexandra

see also: Kings and Queens of England  
 privately commissioned



1981

applied silverwork pattering on side panels

### Andrew Sarah The Duke & Duchess of York Wedding 1986

privately commissioned (Celia Barrington)



PS – Birmingham – 1986

navy enamelled band with lettering  
 lettering on white and blue enamelled banner on verso  
 a double portrait in one roundel – separated by a small silver finial decoration

## Princess Anne and Mark Phillips Wedding 1973

According to Norma Spicer, Swingler was painting thimbles for JS&S for this design – look for his signature. The portraits seem different in each version?



1.

JS&S – Birmingham – 1972

commemorating 'Princess Anne Mark Phillips Nov 1973' (ie no actual date lettering)



1972 b&w advertisement – also with missing '14' date lettering  
Roz Belford – *Collector Circle*



2.



JS&S – Birmingham – 1968/1973

commemorating 'Princess Anne Mark Phillips Nov:14 1973'

**1-2.** double portrait on white enamelled ground  
signed 'PS' in right leaf of the wreath  
L: Princess Anne's scarf isn't blue

## Ludwig van Beethoven 1770-1827

privately commissioned



JS&S - Birmingham  
cobalt blue enamelled sides  
this may not have been signed

## Betsy Ross



scene all round showing Betsy Ross sewing stars onto the US flag  
enamelling right to the rim

## birds



1.

Bullfinch  
JS&S - Birmingham - 1972  
signed 'PS'



JS&S - Birmingham - 1975  
enamelling right to the rim  
bird appears on **both** sides  
signed 'PS' in white within the blue





PS – Birmingham – 1981



PS – Birmingham – 1981

**1-2.** bird appears on **both** sides with slightly differing images on the enamelled roundels  
 applied silverwork patterning on side panels  
 commissioned for the Royal Society for the Protection of Birds  
 limited to **100**  
 Thimbles Only winter 1984



**3.**  
 AJP – Birmingham



'Blue Tit'  
 AJP – Birmingham – 2004  
 with sprigs of blue flowers & pink roses



AJP – Birmingham  
with different sprigs of blue flowers & pink rose



AJP – Birmingham  
with sprigs of blue flowers



1.

Ducks  
JS&S – Birmingham  
C: signed 'PS'

offered as a special prize by The Thimble Guild in February 1995 (R)  
R: flatter apex with wider-spaced indentations  
L & second R: enamelling right to the rim



2.

JS&S – Birmingham  
R: signed 'PS'



3.

JS&S – Birmingham  
signed 'PS'

R: offered as a special prize The Thimble Guild February 1995





4.

PS - Birmingham - 1979



1.

Kingfisher

PS - Birmingham - 1981

cobalt blue enamelled sides

painting the same on both sides, with minor differences

apex indentations are longer



2-3.

AJP - Birmingham



4.

JS&S - Birmingham

signed 'PS'



5.

Malachite kingfisher  
JS&S - Birmingham





owl  
enamelling right to the rim



pheasants  
AJP- Birmingham

see a similar design for Christmas 1977



pheasants  
PS - Birmingham - 1979  
these thimbles are much shorter than usual



swallow  
JS&S - Birmingham - 1972



JS&S - Birmingham - 1972



JS&S - Birmingham - 1972

### Robert/Robbie Burns 1759-1796



1.

PS - Birmingham - 1976  
'Robert Burns 1759-1796' lettering in cursive on white roundel

with a frieze of thistles painted around the lower rim



2.

green applied silverwork patterning on side panels

### Johnny Carson 1977

These first appeared for sale in the US thimble catalogues by Roz Belford – the *Collector Circle* commissioned for her members.



'The Thimble Full of Admiration 15 years of T.V. Magic Oct. 1<sup>st</sup> 1977'  
lettering on white roundel

blue enamelled applied silverwork patterning on side panels

### Mrs Rosalynn Carter 1977

see also Jimmy Carter – Presidents ...



'First Lady's Joy 1977 Mrs Rosalynn Carter'

JS&S – Birmingham – 1975

showing Mrs. Rosalynn Carter – with her daughter Amy – at her sewing machine  
lettering on white roundel with a spool of thread and needle  
enamelling right to the rim



## Prince Charles' Investiture 1969

These thimbles' assay date post-dates the Investiture. Why would PS paint these thimbles for a date that had passed?

Are these the earliest thimbles that were painted by PS?

According to Norma Spicer, Swingler began painting thimbles for JS&S with this thimble. limited to **10** (information from PS)



1.

'1969'

JS&S - Birmingham - 1972

R: unsigned



1b.

JS&S - Birmingham - 1968



details of unsigned 1968 thimble



2.

'1969'

these enamelled bands were used by JS&S so would have been available for Swingler to paint



3.





'Carnarvon 1969'  
JS&S - Birmingham - 1973  
 'Charles Prince of Wales'



JS&S - Birmingham - 1972  
 'Charles Prince of Wales'

the Carnarvon lettering is missing, as well as the yellow shading behind the head  
 short signature

### Prince Charles & Princess Diana 1981

**1-4** in a double portrait - separated by a small silver finial decoration



**1.**

elaborate apex with applied scrolled crown  
 with 'Ich Dien' and PoW feathers with '1981' on sterling apex  
 navy enamelled band commemorating 'HRH Prince & Princess of Wales - the Wedding'  
 Charles - red uniform  
 pre-wedding portraits?



**2.**

PS - Birmingham - 1981

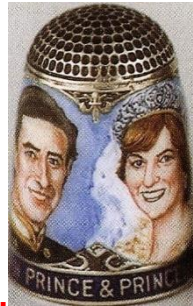
elaborate apex with applied PoW feathers with 'Ich Dien' and with '1981'  
 navy enamelled band commemorating 'HRH Prince & Princess of Wales - the Wedding'  
 verso for this double portrait thimble with St Pauls Cathedral in relief



3.

PS – Birmingham - 1981

elaborate apex with applied PoW feathers with 'Ich Dien' and with '1981'  
 navy enamelled band commemorating 'HRH Prince & Princess of Wales – the Wedding'  
 verso for this double portrait thimble with St Pauls Cathedral in relief  
 the Prince is not smiling



4.

navy enamelled band commemorating 'HRH Prince & Princess of Wales – the Wedding'  
 no date on apex



5.

according to Norma Spicer, Swingler was painting thimbles for JS&S for this design – look for his PS signature  
 no lettering around rim

**H.R.H The Prince of Wales**

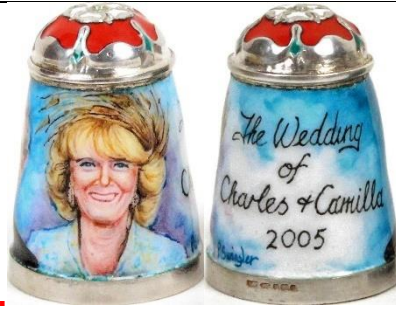


PS – Birmingham – 1982

applied silverwork patterning on side panels  
 lettering on white roundel with Prince of Wales feathers  
 spelling error – Ich **Deim** instead of Ich Dien?



## Charles and Camilla 2005



1.

AJP – Birmingham – 2005  
commemorating 'The wedding of Charles & Camilla 2005'  
lettering in cursive on verso  
elaborate red enamelling and sterling apex  
this apex is the same one used on the Kings and Queens of England set



2.

commemorating 'HRH Prince Charles & Camilla Parker Bowles'  
lettering in cursive around the enamelled rim  
a double portrait in one roundel  
Prince of Wales feathers 'Ich Dien' on verso

## Cheetah

privately commissioned (Irene Schwall)



AJP – Birmingham – 2003  
'Serengeti 2003'  
signed 'PS'  
painted from a private photograph



# Frederic Chopin

no photo

## Christmas

annual thimbles

These first appeared for sale in the US thimble catalogues by Roz Belford – *The Sewing Corner* – from 1975 - commissioned for her members.



JS&S – Birmingham – 1972

nativity



1975

the Adoration of the Magi  
robin on verso  
signed 'PS'  
enamelling right to the rim  
limited to **15**



b&w image which has the robin on a branch



JS&S – Birmingham – 1976  
enamelling right to the rim

R: offered as a special prize *The Thimble Guild* November 1996  
limited to **15**



1977

JS&S – Birmingham – 1977/1978



pheasants in a snowy scene  
enamelling right to the rim  
bottom: a dot on either side of the date  
limited to **15**

see similar design in Birds section where birds face in the opposite direction



1.

1978

PS - Birmingham - 1978

yellow 'candle glow' around the tree

limited to **15**



2.



1978

PS - Birmingham - 1978

slightly different with no candle glow nor holly on verso  
the star at the top of the tree changes with each thimble



1979

limited to **15**



1980  
enamelling right to the rim  
limited to **15**



1981  
limited to **15**



1.

1984  
PS - Birmingham - 1984  
'First Edition Santa' - sprig of holly on verso  
lettering on white roundel with cobalt blue enamelled sides



2.

1984  
PS - Birmingham - 1984  
'1st Edition Santa' - no sprig of holly on verso  
lettering on white roundel with cobalt blue enamelled sides







3.

PS – Birmingham – 1984

these were offered for sale by the USA's Jean Shoup in *Thimbles Only*, winter 1984  
'Christmas in London 1984'



1987

PS – Birmingham – 1987

'Prettige Feestdagen 1987'

Dutch lettering in cursive

commissioned by Kay Sullivan *De Vingerhoed*

'KS' (mark for Kay Sullivan's *De Vingerhoed*) and ZI [the import marks into The Netherlands] stamped on the apex

limited to **35** - fewer than this were made  
(information from PS)



PS – Birmingham – 2004

no Christmas lettering

additional band of holly and ivy lettered around the rim  
signpost: 'To London'

The Christmas thimbles from 2009–2014 were privately commissioned (Lydia Hamilton).



2009

AJP – Birmingham – 2009



2010

AJP – Birmingham – 2010

(hallmark is very finely stamped on outer rim)

the two children are Peter's grandchildren

the dog in the foreground is Peter's favourite dog 'Scottie' – there is a small robin painted on the right edge of the wall



2011

AJP – Birmingham – 2011

(hallmark is very finely stamped on outer rim)

apex is handpainted enamel

the figures in foreground are Swingler and one of his grandchildren – and his dog walking in the snow at Ottery St Mary with the local church



2012

AJP – Birmingham – 2012

(hallmark is very finely stamped on outer rim)





2013

AJP – Birmingham – 2013

(hallmark is very finely stamped on outer rim)  
the Madonna's face is painted in exquisite detail – photos don't do her justice



2014

AJP – Birmingham – 2014

(hallmark is very finely stamped on outer rim)  
was this Swingler's last thimble?

## Winston Churchill

according to Norma Spicer, Swingler was painting thimbles for JS&S for this design – look for his signature in the leaves



1.

1874-1965

JS&S – Birmingham – 1972/1974  
signed 'P.S.' in leaf at right of wreath  
cobalt blue enamelled sides



2.

1874-1965

PS – Birmingham – 1981  
different apex, enamelling going down to fine band  
signed 'PS' in leaf at right of wreath - extra signature within portrait

3.



1874-1974

JS&S – Birmingham – 1975/1977  
 signed 'PS' in leaf at right of wreath  
 cobalt blue enamelled sides  
 enamelling to the rim

these were offered for sale by the US *The Sewing Corner*  
 lower: light colouring around the roundel

4.



1874-1974

PS – Birmingham – 1976  
 signed 'PS' in leaf  
 applied silverwork patterning on side panels  
 light colouring around the roundel  
 limited to 6 (information from PS)

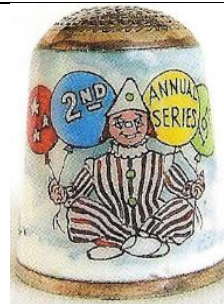
3-4. issued for Churchill's centenary

### clowns

These first appeared for sale in the US thimble catalogues by Roz Belford – *The Collector's Choice*, spring 1979 – commissioned for her members.



1<sup>st</sup> annual series 1978



2<sup>nd</sup> annual series 1979



## Corn Palace

privately commissioned (Linda Shaneyfelt)



2009

commissioned by Linda Shaneyfelt for the Corn Palace in her hometown of Mitchell, South Dakota

## Diana Princess of Wales 1961-1997



G&N - Birmingham - 1997

lettering in cursive on white roundel with a rose  
applied silverwork patterning on side

## The Dog & Bird



2004

'The Dog & Bird'

PS - Birmingham - 2004

lettering on verso in cursive

## Down Memory Lane



AJP – Birmingham – 1997  
lettering in cursive



AJP – Birmingham – 2008  
lettering in cursive



AJP – Birmingham



AJP – Birmingham



## Dutch Queens

commissioned by Anne Jansen of The Netherlands  
 applied silverwork with different colour enamelled patterning on side panels



'Emma Koningen der Nederlanden 1890-98'  
 black enamel



'Wilhelmina Koningen der Nederlanden 1898-1948'  
 yellow enamel



'Juliana Koningen der Nederlanden 1948-1980'  
 yellow enamel



'Beatrix Koningen der Nederlanden 30<sup>th</sup> April 1980'  
 yellow enamel



Queen Beatrix  
 taking the oath  
 20 April 1980



b&w photo

## Dutch scene

privately commissioned



R: 1979

enamelling right to the rim and wraps all round the thimble

## Easter 2011

privately commissioned



AJP – Birmingham – 2005  
lettering in cursive

## Eiffel Tower Paris

privately commissioned



JS&S – Birmingham  
enamelling right to the rim

## Elephants

privately commissioned (Irene Schwall)



AJP – Birmingham – 2003  
'Ngorongoro 2003'  
signed 'PS'  
painted from a private photograph



## Queen Elizabeth II

see also: Kings and Queens of England



1.

'1977 EJR'

JS&S – Birmingham – 1977

commemorating 'The Queen's Silver Jubilee 1977'

cobalt blue enamelled sides

enamelling right to the rim

these first appeared for sale by Roz Belford *The Sewing Corner*

signed 'PS' in white

limited to **15**

according to Norma Spicer, Swingler was painting thimbles for JS&S for this design – look for his signature above the left shoulder



2.

black enamelled applied silverwork patterning on side panels  
enamelled coat-of-arms on verso



2a.

PS – Birmingham – 1970s

privately commissioned by a Canadian collector (information from PS)



2b.

PS – Birmingham – 1977

lower boxed: available from 'Sewing Corner Whitestone New York'

'23' stamped up in apex

height:  $1\frac{1}{8}$  ins (28.5mm)





3.

PS – Birmingham – 1977

commemorating 'Queen Elizabeth II Royal Silver Jubilee 1977'

the lettering is around the rim of royal blue enamelling

a double portrait of Queen Elizabeth II and Prince Philip in profile in one roundel

elaborate silver royal coat-of-arms applied on verso, which includes daffodils roses etc, with no enamelling

limited to **250**

boxed: shows the hallmarks on the outer rim and a thistle - shamrocks - English rose - daffodil supporting the enamelled portrait



3a.

PS – Birmingham – 1977

commemorating 'Queen Elizabeth II Royal Silver Jubilee 1977'

(marked on outer rim)

the lettering is around the rim of royal blue enamelling

a double portrait, facing forward, in one roundel

elaborate silver royal coat-of-arms applied on verso, with no enamelling



4.

JS&S – Birmingham – 1978



commemorating 'Coronation of Queen Elizabeth 1953-1978'  
pale blue enamelled sides  
stone' in apex



4b.

JS&S - Birmingham - 1978

commemorating 'Coronation of Queen Elizabeth 1953-1978'  
pale blue enamelled sides



5.

commemorating 'The Queen's Golden Jubilee 2002'  
applied silverwork sides' patterning

## Queen Elizabeth the Queen Mother



1.

JS&S - Birmingham - 1975

'H.R.H Queen Elizabeth the Queen Mother'

L: signature within wreath  
lettering on a yellow scroll  
enamelling right to the rim



2.

commemorating 'H.R.H the Queen Mother 75<sup>th</sup> Birthday 1975'  
lettering on a yellow scroll  
enamelling right to the rim

3.



PS - Birmingham - 1980  
 commemorating '80<sup>th</sup> Birthday Queen Elizabeth the Queen Mother 1980'  
 lettering on white roundel  
 applied silverwork patterning on side panels  
 limited to **25**

4.



PS - Birmingham - 1984  
 where the crown and her jewellery are different  
 'To commemorate the Queen Mothers 90<sup>th</sup> birthday 4-8-90'  
 applied silverwork patterning on side panels  
 commissioned by Thimble Society of London  
 L: with lilies and leaves



# Elgar

Worcester Cathedral on verso



1.

JS&S - Birmingham  
cobalt blue enamelled sides



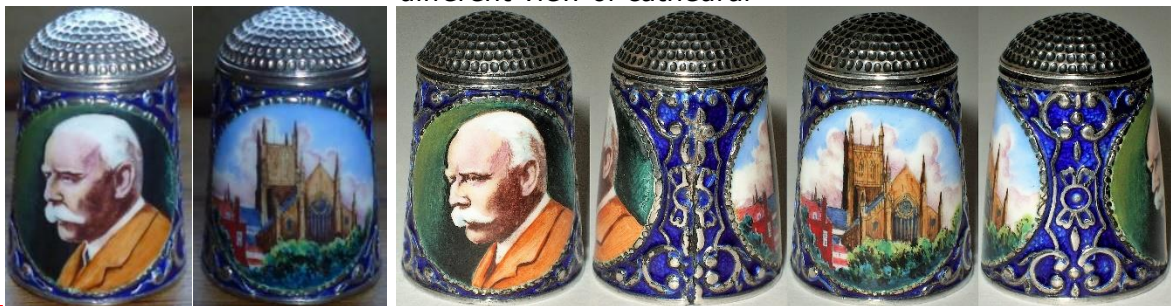
2.

PS - Birmingham - 1981  
applied silverwork pattering on side panels  
different view of the Cathedral



3.

applied silverwork pattering on side  
Elgar's blue jacket  
different view of cathedral



4.

PS - Birmingham - 1981  
applied silverwork pattering on side panels  
with blue enamelling  
Elgar's mustard-coloured jacket

thimble was commissioned to commemorate the unveiling of the statue of Elgar by H.R.H Prince Charles  
on 2 June 1981

limited to **8** for an antique dealer in Worcester

## Princess Eugenie 1990

with her mother Sarah the Duchess of York



1.

'To commemorate the Birth of Princess Eugenie 23-3-90'  
lettering in cursive on white roundel  
commissioned for sale by the Thimble Society of London  
applied silverwork patterning on side panels



2.

applied silverwork patterning on side panels

## Falklands 1982

According to Norma Spicer, Swingler was painting thimbles for JS&S for this design – look for his signature.



'To Commemorate the British Victory of the Falklands 15<sup>th</sup> June 1982'

lettering in cursive on white roundel

enamelling right to the rim



## Girl in a Straw Hat

privately commissioned  
see also The Straw Hat



G&N – Birmingham – 2007

applied silverwork patterning on side panels  
lettering in cursive on white roundel – with red rose

## The Good Shepherd

privately commissioned



lettered in upper case

## The Hunt

These first appeared for sale in the US thimble catalogues by Roz Belford – *The Sewing Corner* – commissioned for her members.

According to Norma Spicer, Swingler was painting thimbles for JS&S for this design – look for his signature.

Swingler lettered two of these designs with named titles.



enamelling right to the rim  
limited to **8**

2.



'The Fox Hunt'  
PS - Birmingham - 1977

3.



JS&S- Birmingham - 1989  
enamelling right to the rim  
a more naïve study than other two designs

4.



AJP - Birmingham  
with hounds

5.



AJP - Birmingham  
with hounds

6.



"Hunting scene"  
AJP - Birmingham  
rider facing right  
signed 'P.Swingler'





7.

'The Last Hunt'  
AJP – Birmingham  
with white horse

### The Jazz Singer [Al Jolson] 1977

These first appeared for sale by Roz Belford *The Collector's Choice* spring 1979



1.

PS – Birmingham -1977  
'The Jazz Singer October 1927 Half a Century Golden Sound'  
'1927-1977'  
limited to **200**



2.

'The Jazz Singer October 1927 Half a Century (sic) Golden Sound'  
'1927-1977'  
the miss-spelling was corrected on later examples



3.



PS – Birmingham -1979  
shows a small rim of yellow trim at apex rim

## Josephine 1763-1814

privately commissioned  
see also Napoleon



applied silverwork patterning on side panels  
lettering in cursive on white roundel – with red rose and blue flowers

## Kings and Queens of England

Each thimble is a work of art with the stunning red enamelled domed apex. The apex is crowned with a silver edged English rose, which is of white enamel within a red enamelled English rose design. Some of the enamelled rose apexes have green enamelling inserts (centre photo below). The silver rose inner apex is also shown.



The lettering - 'Kings and Queens of England' – is around the thimble rim of royal blue enamel. There is elaborate applied silverwork of a lion rampant and a unicorn on each side of the roundels.



signed 'P.Swingler' at edge of each portrait.

The images used to paint each monarch were taken from 1930s cigarette cards, given away in packets by John Player & Sons (information from Peter Swingler to Lydia). This was a necessity as the portraits of royalty belong to the Crown.

The set of 40 which began in 1982, and continued until 1997, has the monarch's name and reign dates lettered (mainly in cursive) on a white roundel on the verso, with silver scrolls under the roundel. The set now numbers 41 in July 2018 with the addition of an earlier King Ethelred.

Thimble Society of London had single thimbles for sale at **£52 each** from 1983.

These individual popular monarchs could also be commissioned from Swingler but judging by the examples, they were a plain version with only the portrait and bio details. There was no red enamelled apex nor was there the blue enamelled rim with the lettering 'Kings and Queens of England'.

The set was boxed and lined with blue velvet.





set of 40

According to the TSL in summer 1983, the thimbles would be issued from 1983, when there was only one full set available. They named the set 'Reigning Monarchs of Britain'.

The thimbles of this set weigh 14 grams.

Limited to **5** sets

### The reigning monarchs set of 40



King Ethelred  
978-1016

PS – Birmingham – 1985

this earlier king has not been included in this Kings & Queens of England set before commissioned by The Thimble Guild, Scotland



King William I  
1066-87

R: PS – Birmingham – 1989



King William II  
1087-1100

PS – Birmingham – 1989



King Henry I  
1100-35

L: PS – Birmingham – 1986

R: PS – Birmingham – 1989



King Stephen  
1135-54

L: PS – Birmingham – 1986

R: PS – Birmingham – 1989



King Henry II  
1154-89

L: PS – Birmingham – 1984

R: PS – Birmingham – 1989



4

King Richard I  
1189-99

L: PS - Birmingham - 1986  
R: PS - Birmingham - 1989



King John  
1199-1216

L: PS - Birmingham  
C: PS - Birmingham - 1989  
R: PS - Birmingham - 1985



King Henry III  
1216-72

L: PS - Birmingham - 1985  
2<sup>nd</sup> L: PS - Birmingham - 1984  
R: PS - Birmingham - 1986



King Edward I  
1272-1307

L: PS - Birmingham - 1986  
R: PS - Birmingham - 1989



King Edward II  
1307-27

L: PS - Birmingham - 1984  
R: PS - Birmingham - 1989





King Edward III  
1327-77  
PS - Birmingham - 1989



King Richard II  
1377-99  
L: PS - Birmingham - 1986  
R: PS - Birmingham - 1989



King Henry IV  
1399-1413  
L: PS - Birmingham - 1984  
C: PS - Birmingham - 1985  
R: PS - Birmingham - 1989



King Henry V  
1413-22  
L: PS - Birmingham - 1984  
C: PS - Birmingham - 1986  
R: PS - Birmingham - 1989



King Henry VI  
1422-61  
L: PS - Birmingham - 1984  
C: PS - Birmingham - 1986  
R: PS - Birmingham - 1989



King Edward IV

1461-83

L: PS - Birmingham - 1985 (L)

R: PS - Birmingham - 1989 (P)



King Edward V

1483

L; PS - Birmingham - 1986

R: PS - Birmingham - 1989



King Richard III

1483-85

L: PS - Birmingham - 1985

C: PS - Birmingham - 1986

R: PS - Birmingham - 1989



King Henry VII

1485-1509

L: PS - Birmingham - 1985

C: PS - Birmingham - 1986

R: PS - Birmingham - 1989

see Elizabeth of York





King Henry VIII  
1509-47

L: PS - Birmingham - 1983  
 C: PS - Birmingham - 1986  
 R: PS - Birmingham - 1989  
 see his six wives



King Edward VI  
1547-53

L: PS - Birmingham - 1985  
 R: PS - Birmingham - 1989



Queen Mary I  
1553-58

L: PS - Birmingham - 1986  
 2<sup>nd</sup> R: PS - Birmingham - 1989  
 R: G&N - Birmingham - 1997



Queen Elizabeth I  
1558-1603

2<sup>nd</sup> R: PS - Birmingham - 1985  
 R: PS - Birmingham - 1989



King James I  
1603-25  
PS - Birmingham - 1989



King Charles I  
1625-49  
L: PS - Birmingham - 1985  
C: PS - Birmingham - 1989  
R: G&N - Birmingham - 1997  
monarch facing in different directions  
see Queen Henrietta Maria



King Charles II  
1660-85  
L-R 1: PS - Birmingham - 1985  
2: PS - Birmingham - 1986  
3: PS - Birmingham - 1989  
4: G&N - Birmingham - 2002  
see Catherine of Braganza



King James II  
1685-88  
L: PS - Birmingham - 1984  
C: PS - Birmingham - 1986  
R: PS - Birmingham - 1989  
C: blue background - L&R: black background





King William III  
1688-1702

L: PS - Birmingham - 1984  
R: PS - Birmingham - 1989  
see Queen Mary II  
who was joint monarch with William  
see also: Willem III (Dutch)



Queen Anne  
1702-14

L&C: PS - Birmingham - 1985  
R: PS - Birmingham - 1989



King George I  
1714-27

R: PS - Birmingham - 1989  
L: G&N - Birmingham - 1997



King George II  
1727-60

C: PS - Birmingham - 1989  
R: G&N - Birmingham - 1997  
see Caroline of Ansbach



King George III  
1760-1820

L: PS - Birmingham - 1982

R: PS - Birmingham - 1989

C: G&N - Birmingham - 1997

see Queen Charlotte of Mecklenburg



King George IV  
1820-30

L: PS - Birmingham - 1986

R: PS - Birmingham - 1989

see Queen Caroline of Brunswick



King William IV  
1830-37

L: PS - Birmingham - 1986

R: PS - Birmingham - 1989

see Queen Adelaide



Queen Victoria  
1837-1901

1: PS - Birmingham - 1984

2: PS - Birmingham - 1986

3: PS - Birmingham - 1989

4: G&N - Birmingham - 1997



King Edward VII  
1901-10

L: PS - Birmingham - 1989

R: G&N - Birmingham - 1997

see Queen Alexandra of Denmark





King George V  
1910-36

L: PS - Birmingham - 1989  
R: G&N - Birmingham - 1997  
see Queen Mary



King Edward VIII  
Jan.20-Dec.11 1936/1936

C: PS - Birmingham - 1986  
R: PS - Birmingham - 1989  
monarch's name is printed (L) - in cursive (R)



King George VI  
1936-52

C: PS - Birmingham - 1989  
R: G&N - Birmingham - 1997  
monarch's name is printed (L) - in cursive (R)  
L: b&w image



Queen Elizabeth II  
1952

L: PS - Birmingham - 1989  
different portraits (crowns) with image on R a Coronation painting

I understand that there are now 56 thimbles in one of the sets of the Kings and Queens of England, which includes sixteen of the 'wives' (some of the spousal thimbles don't have their dates). This bigger set of 56 was offered at auction. Some of these extra thimbles have the hallmark date of 1997 and the mark is for G&N of Birmingham.

Is there more than one of these expanded sets?



boxed set of 56 with includes the 16 queens

### Queens of reigning monarchs

 <p>Queen Adelaide G&amp;N – Birmingham – 1997 wife of William IV</p>	 <p>Queen Alexandra of Denmark G&amp;N – Birmingham – 1997 wife of Edward VII</p>	 <p>Anne Boleyn G&amp;N – Birmingham – 1997 2nd of Henry VIII's wives</p>
 <p>Anne of Cleves 1515-57 PS – Birmingham – 1986 4th of Henry VIII's wives</p>	 <p>Caroline of Ansbach G&amp;N – Birmingham – 1997 wife of George II</p>	 <p>Queen Caroline of Brunswick PS – Birmingham – 1986 wife of George IV</p>
 <p>Catherine Howard G&amp;N – Birmingham 1997 5th of Henry VIII's wives</p>	 <p>Catherine of Aragon G&amp;N – Birmingham 1997 1st of Henry VIII's wives</p>	 <p>Catherine of Braganza G&amp;N – Birmingham 1997 wife of Charles II</p>





Queen Charlotte of Mecklenburg  
G&N – Birmingham – 1997  
 wife of George III



Elizabeth of York  
 wife of Henry VII



Queen Henrietta Maria  
 wife of Charles I



Jane Seymour  
 1504-37  
G&N – Birmingham – 2002  
 3rd of Henry VIII's wives



Katherine Parr  
 1512-48  
PS – Birmingham – 1986  
 6th of Henry VIII's wives



Queen Mary II  
 1688-94  
 2<sup>nd</sup> R: PS – Birmingham – 1986  
 R: PS – Birmingham – 1989  
 joint monarch with William III  
 see also: Willem III (Dutch)



Queen Mary  
 1910-36/R no dates  
 R: G&N – Birmingham – 1997  
 wife of George V

## Kudu

privately commissioned (Irene Schwall)



AJP – Birmingham – 1996  
'Zimbabwe 1996'  
signed 'PS'  
based on a watercolour painting

## The Lighthouse Keepers Daughter

privately commissioned



G&N – Birmingham - '925'  
(not assayed)  
applied silverwork patterning on side panels  
lettering in cursive on white roundel

## Little Girl in Blue

privately commissioned



'Verspronck 1597-1662'  
applied silverwork patterning on side panels  
lettering in cursive on white roundel  
painted from a private photograph



## Louis XVI King of France 1754-1793

privately commissioned  
see also Marie Antoinette



applied silverwork patterning on side panels  
lettering in cursive and upper case on white roundel

## Sir Malcolm Sargent 1895-1967

privately commissioned



applied silverwork patterning on side panels  
with mustard enamelling  
lettering in upper case on white in blue roundel with wreath

## Marie Antoinette 1755-1793

privately commissioned  
see also Louis XVI



applied silverwork patterning on side panels  
lettering in cursive on white roundel with rose

## Marie Louise 1791-1847

privately commissioned  
see also Napoleon



applied silverwork patterning on side panels  
lettering in cursive on white roundel with two roses and blue flowers

## Mother's Day

annual issues

These first appeared for sale in the US thimble catalogues by Roz Belford – *The Collector's Choice/The Sewing Corner* – commissioned for her members.

According to Norma Spicer, Swingler was painting thimbles for JS&S for some of these designs – look for his signature.



1.



1975

JS&S – Birmingham – 1975

a mother's rose  
enamelling right to the rim



2.

'1975' painted in a different position and lettering for Mother's Day different





1976

JS&S - Birmingham - 1975  
 aka 'Whistler's Mother'  
 lettering in cursive  
 enamelling right to the rim  
 limited to **18**



1977

JS&S - Birmingham - 1977  
 mother and baby  
 lettering in cursive  
 L: mother facing left  
 enamelling right to the rim



1978

JS&S - Birmingham - 1978  
 sister and with a baby brother  
 lettering in cursive  
 L: red dress - R: blue dress

Lower: this is the prototype offered by The Collector's Circle in 1978. The painting goes all round the thimble: not contained within the roundel



no photo

1979  
mother and toddler

### Earl/Lord Mountbatten 1900-1979



1.

1979

PS - Birmingham - 1979

'Earl Mountbatten of Burma 1900-1979'

blue enameled applied silverwork patterning on side panels  
lettering on white roundel



2.

1979

'Lord Mountbatten Admiral of the Fleet 1900-1979'

C: blue enameled applied silverwork patterning on side panels  
lettering on white roundel  
showing the insignia of office



## Mozart

privately commissioned (Celia Barrington)



PS - Birmingham - 1991

'To Commemorate The Bi-Centennial Mozart 1791-1991'  
applied silverwork patterning on side panels  
L: patterned collar

## My Dear Mother

privately commissioned



applied silverwork patterning on side panels

## Napoleon Bonaparte 1769-1821

privately commissioned



PS - Birmingham - 1976

red enamelled applied silverwork patterning on side panels

## Napoleon II 1811-1832

privately commissioned



applied silverwork pattering on side panels  
lettering in cursive on white roundel with two roses

## Horatio Nelson and Emma Hamilton



PS - Birmingham - 1975

upper images: (the hallmarks are unusually placed on the apex)

'1758-1805' - portrait facing left

with royal blue enamelling

enamelling right to the rim

portrait cameo bound by a silver plaited rope border on both sides

signed 'PS' on right leaf of the wreaths



PS - Birmingham - 1976

boxed set completes the set of two

'Emma Hamilton 1761-1815' / 'Horatio Nelson 1758-1805' (facing right)

signed 'PS' on right leaf of the wreaths

no enamelled sides



3.



G&N – Birmingham – 2005

'Lord Nelson Bi-Centenary Anniversary 1805-2005/Emma Lady Hamilton 1765-1815' pair  
lettering in cursive on white roundel with rose on Emma's  
applied silverwork patterning on side panels

commissioned by Thimble Society of London to commemorate the bicentenary of the Battle of Trafalgar  
it was planned - to offer **ten pairs** in gold  
unknown how many of these were made

4.



### The Old Lace-maker

privately commissioned



JS&S – Birmingham

lettering in cursive in white roundel with two crossed lace bobbins and two roses  
royal blue enamelled sides

**personalised**

Swingler undertook personalised commissions

There may be many more of these one-off thimbles commissions painted by Swingler



'Albert & Mildred Jarvis Nov.23<sup>rd</sup> 1994 50<sup>th</sup> anniversary'  
lettering in cursive on white enamelled roundel  
TCI spring 2011



'Jina Samulka 2009 Thimble Collector'  
AJP – Birmingham  
lettering in cursive on white enamelled roundel  
with a rose  
applied silverwork patterning on side panels



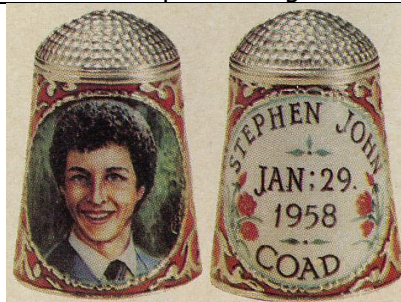
'Karel Anne Jansen'  
25<sup>th</sup> – 30<sup>th</sup> (pearl) – 35<sup>th</sup> (coral) wedding anniversaries  
the 30<sup>th</sup> had two pearls - the 35<sup>th</sup> two coral – 25<sup>th</sup>



'Kathryn Aileen Shoup Oct. 11<sup>th</sup> 1982'  
commissioned by her mother Jean Shoup  
lettering on white roundel with sprigs of flowers  
applied silverwork patterning on side panels



'Linda Shaneyfelt 2006 thimble collector'  
lettering in cursive on white enamelled roundel  
with a rose  
applied silverwork patterning on side panels



'Stephen John Coad Jan 29 1958'  
commissioned by his mother Leona  
lettering on white roundel with red roses  
red enamelled applied silverwork patterning on side panels  
Collectors Corner spring 1978



PS – Birmingham – 1988

'Martha Arrufat'  
lettering in cursive  
commemorating '25 years Bay Area thimble Society 1978-2003'  
BATS symbol with blue flowers  
thimble designed by Martha and several other BATS members commissioned commemorative thimbles



**pets**

privately commissioned



'Black Douglas 'Dougie''  
lettering in cursive  
AJP - Birmingham - 925  
with a rose



'Red'  
'8-2-88/9-19-00' lettering in cursive  
with posies of roses and blue sprigs



'Roger the Cat'  
enamelling right to the rim  
TCI fall 2006



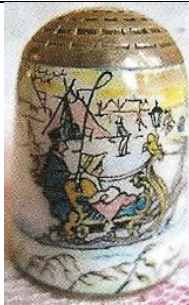
JS&S - Birmingham - 1975  
Rhodesian Ridgeback



'Scottish Terrier'  
lettering in cursive  
with Scottish thistles

**Anton Pieck**

privately commissioned



one of this Dutch artist's paintings

## The Poor Bird

privately commissioned



applied silverwork patterning on side panels  
lettering on white enamelled roundel in cursive – with roses and blue sprigs

## Presidents of America

'Presidents of America' – is lettered around the rim of navy-blue enamelling and there is elaborate applied silverwork of an eagle on each side of the roundels - with each eagle facing towards the President's portrait.

Originally these were created as a set of 40 by 1983.

The set was offered for sale in a box lined with blue velvet, with spaces for the set to grow.

The President's name and term dates are lettered (mainly in cursive) on the verso in a white enamelled roundel, with applied sterling silver scrolls around the names' roundels.

The portraits are signed 'P.Swingler'.

These thimbles have the PS sterling marks lettered on the rim, with a variety of hallmark dates beginning in 1977 – 1984 – 1986 – 1990 – 2003.

The exception are the three additional thimbles, which were marked on the inner rim  
G&N – Birmingham – 2003

The boxed set below, was added to in 2009 when the owner, Mary Cruwys, commissioned the extra three Presidents (42<sup>nd</sup>-44<sup>th</sup>), who came to office after the first set was created.

As the thimbles in their various sets were painted over many years, you will notice different portraits of the same President – and the short/long forms of names and dates: some are even facing in the opposite direction and the background behind the portrait is of a different colour.

limited to **3** sets (information from PS)

Swingler also painted privately commissioned single Presidents, but they did not have the royal blue rim with the 'Presidents ...' lettering. Look for them under their individual names.



set of 43 auctioned in 2016

PS – Birmingham – 1990  
(Q)





A rare and probably unique set of forty three English silver and enamel thimbles by Peter Swingler (died 2015) commemorating the Presidents of the United States of America 1801-2009. Each thimble with an enamel oval portrait of the relevant president flanked to each side by an eagle, to the reverse an oval enamel plaque giving name, dates served and numerical ranking, within a cast scroll frame, over a frieze in blue enamel (Presidents of America) (43)

A letter dated 22nd November 2009 from P. Swingler to Mary Cruwys states the following:

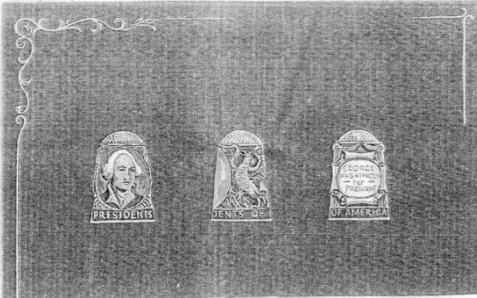
Dear Mrs Cruwys

I was pleased to hear from your letter that you have received, the Presidents of America. The sets were painted approximately 20 years ago, and only 3 sets were completed. I have noted from your letter that you would like your set brought up to date. Starting with:- Grover Cleveland for his 2ND term No. 24 also No. 38 Gerald Ford for his 2ND term No. 41 George H. Bush } No. 42 Bill Clinton } Total six No. 43 George W. Bush } thimbles No. 44 Barack Obama } At this moment the Silver Thimbles are now being made ready for me to start painting. The cost for each Thimble would be £90.00 and will be completed in the new year. Would you please let me know if you have any queries. We hope you are both keeping well.

Yours Sincerely

P Swingler

copy of the handwritten letter from Peter Swingler to Mary Cruwys 2009, when the three additional President thimbles were purchased



This line-drawing example features George Washington without dates just 'First President'



PRESIDENTS OF AMERICA by PETER SWINGLER

All 40 United States Presidents are handpainted and signed by the famed English miniature artist, Peter Swingler. Hand crafted and hallmarked on antique sterling silver. Inscribed on the back in enamel; names, dates and number of each presidency. "Presidents of America" against cobalt blue hard enamelling on rim. Eagles decorate each side. Purchase by series only, with delivery to begin February, 1984. A security deposit of \$500.00 must accompany your order, to be held as payment for the last five #36 thru #40, this series qualifies for T.O.M., but all 40 must be purchased within one year. I have received the first 12 of my set, only the second set to be issued, and they are magnificent!! Limited to 20 SETS world-wide!! 484 \$100.00 each

original advertising material for the Presidents of America set – unknown source & date



1<sup>st</sup> President George Washington  
1789-1797

PS – Birmingham – 1977

C: 1<sup>st</sup> President 1801-1809 [wrong dates] R: no dates



2<sup>nd</sup> President John Adams  
1797-1801

L: PS – Birmingham

L: dates curved – R: straight



3<sup>rd</sup> President Thomas Jefferson  
1801-1809  
L: PS – Birmingham  
L: dates curved – R: straight



4<sup>th</sup> President James Madison  
1809-1813 [incorrect date]/1809-17  
L: PS – Birmingham  
L: dates curved – R: straight



5<sup>th</sup> President James Monroe  
1816-25



6<sup>th</sup> President John Quincy Adams  
1825-29



7<sup>th</sup> President Andrew Jackson  
1829-1837  
L: PS – Birmingham



8<sup>th</sup> President Martin Van Buren  
1837-41/1837-1841  
R: PS – Birmingham – 1984  
L: name written in one line – R: in two



9<sup>th</sup> President William H Harrison  
1841





10<sup>th</sup> President John Tyler  
 1841-1845/1841-45  
 L: PS - Birmingham  
 L: dates curved - R: straight



11<sup>th</sup> President James Knox Polk  
 1845-1849  
 R: PS - Birmingham - 1986



12<sup>th</sup> President Zachary Taylor  
 1849-1850  
 L&R: PS - Birmingham - 1986



13<sup>th</sup> President Millard Fillmore  
 1850-1853  
 R: PS - Birmingham - 1984

president's portraits face in opposite directions



14<sup>th</sup> President Franklin Pierce  
 1853-1857  
 R: PS - Birmingham - 1984



15<sup>th</sup> President James Buchanan  
 1857-61

president's portraits face in opposite directions



16<sup>th</sup> President Abraham Lincoln  
 1861-1865

L: PS - Birmingham - 1984



17<sup>th</sup> President Andrew Johnson  
 1865-1869  
 R: PS - Birmingham - 1984  
 L: no dates



18<sup>th</sup> President Ulysses S Grant  
 1869-1877  
 R: PS - Birmingham - 1986



19<sup>th</sup> President Rutherford B Hayes/R B Hayes  
 1877-1881  
 R: PS - Birmingham - 1984 (K)  
 L: no dates  
 L: name lettered in cursive - R: printed



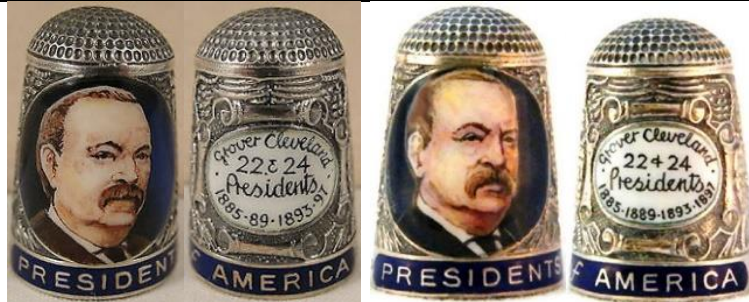
20<sup>th</sup> President James A Garfield  
 1881  
 R: PS - Birmingham - 1984  
 L: no dates  
 L: name lettered in cursive - R: printed





21<sup>st</sup> President Chester A Arthur/Alan C Arthur [incorrect name]  
1881-1883

R: PS - Birmingham - 1986  
name is printed (R) - in cursive (L)



22 & 24 Presidents Grover Cleveland  
1885-89 1893-97/1885-1889 1893-1897

L: PS - Birmingham - 1984



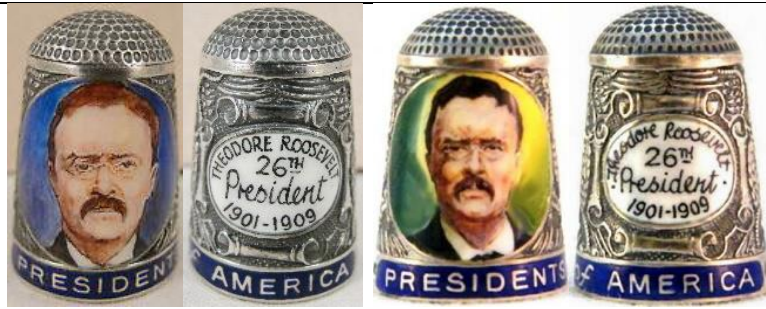
23<sup>rd</sup> President Benjamin Harrison  
1889-93

R: PS - Birmingham - 1984  
name is printed (R) - in cursive (L)



25<sup>th</sup> President William M<sup>c</sup>Kinley  
1897-1901/1897-1901

L: PS - Birmingham - 1984  
this president's portraits face in opposite directions  
name is printed (L) - in cursive (R)



26<sup>th</sup> President Theodore Roosevelt  
1901-1909

L: PS - Birmingham - 1990  
name is printed (L) - in cursive (R)



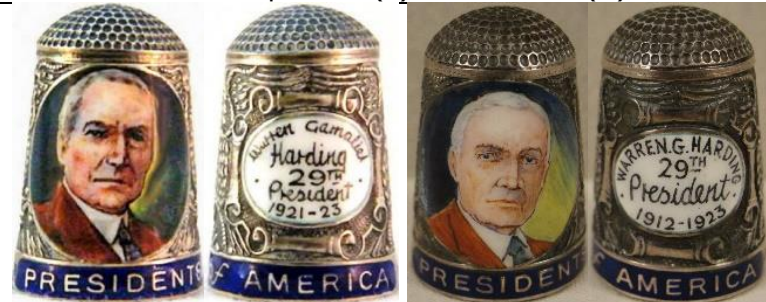
27<sup>th</sup> President William H Taft  
1909-13/1909-1913

R: PS - Birmingham - 1977 (C)



28<sup>th</sup> President Woodrow Wilson  
1913-1921/1913-21

L: PS - Birmingham  
name is printed (L) - in cursive (R)



29<sup>th</sup> President Warren Gamaliel/Warren G Harding  
1921-23/1921-1923

R: PS - Birmingham - 1984  
name is printed (R) - in cursive (L)





30<sup>th</sup> President Calvin Coolidge  
1923-1929

R: PS - Birmingham - 1984  
name is printed (R) - in cursive (L)



31<sup>st</sup> President H C Hoover/Herbert-Clark Hoover  
1929-1933/1929-33

L: PS - Birmingham  
name is printed (L) - in cursive (R)



32<sup>nd</sup> President - F D Roosevelt/Franklin Delano Roosevelt  
1933-1943/1933-43

L: PS - Birmingham - 1984  
name is printed (L) - in cursive (R)



33<sup>rd</sup> President H S Truman/Harry S Truman  
1945-1953/1945-53

L: PS - Birmingham - 1984  
name is printed (L) - in cursive (R)



34<sup>th</sup> President Eisenhower/Dwight David Eisenhower  
 1953-1961/1953-61  
 L: PS – Birmingham  
 name is printed (L) – in cursive (R)



35<sup>th</sup> President John F Kennedy/John Fitzgerald Kennedy  
 1961-1963/1961-63  
 L: PS – Birmingham – 1984  
 name is printed (L) – in cursive (R)



36<sup>th</sup> President L B Johnson/Lyndon Johnson  
 1963-1969  
 L: PS – Birmingham – 1984  
 name is printed (L) – in cursive (R)



37<sup>th</sup> President R M Nixon/Richard M Nixon  
 1969-1974  
 L: PS – Birmingham  
 name is printed (L) – in cursive (R)  
 L: mirror image





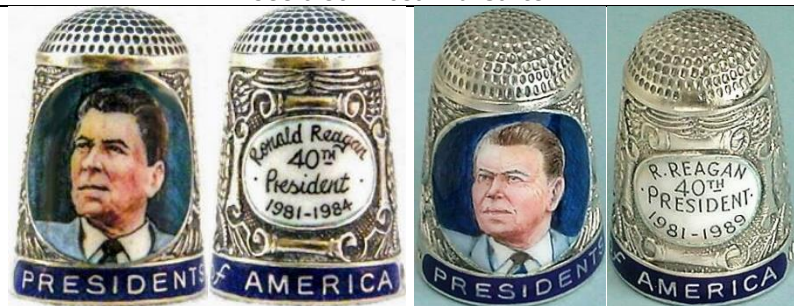
38<sup>th</sup> President G Ford/Gerald Ford  
1974-77

L: G&N – Birmingham – 2000



39<sup>th</sup> President J Carter/Jimmy Carter  
1977-1981

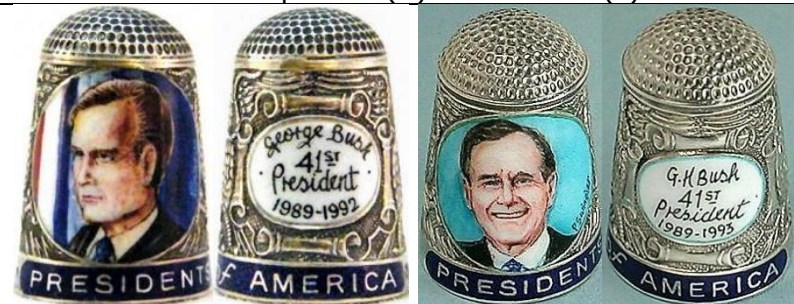
L: PS – Birmingham – 1984  
name is printed (L) – in cursive (R)  
see also: Rosalind Carter



40<sup>th</sup> President Ronald Reagan/R Reagan  
1981-1984/1981-1989

R: PS – Birmingham – 1984  
L: PS – Birmingham

name is printed (R) – in cursive (L)



41<sup>st</sup> President George Bush/G H Bush  
1989-1992/1989-1993

R: G&N – Birmingham – 2003



42<sup>nd</sup> President B Clinton  
1993-2001  
G&N – Birmingham – 2003



43<sup>rd</sup> President G W Bush  
2001-09  
G&N – Birmingham – 2003



44<sup>th</sup> President B Obama  
2009  
L: G&N – Birmingham – 2003

### The Raising of the Mary Rose 1545-1982

privately commissioned



1982

'To commemorate the Raising of the Mary Rose 1545-1982'  
applied silverwork patterning on side panels  
lettering in cursive on white roundel with two roses  
enamelled white Tudor Rose on red on apex with extra green enamelling



## Rembrandt 1601-1669



1.

applied silverwork pattering on side panels



2.

applied silverwork pattering on side panels  
lettering in cursive on white roundel with rose and sprig



3.

applied silverwork pattering on side panels

## Saint Marks Venice

privately commissioned (Linda Shaneyfelt)



JS&S – Birmingham  
lettered in upper case  
enamelling right to the rim

## The Seamstress



PS - Birmingham - 1985  
cobalt blue enameled sides  
lettering in cursive on white roundel with rose and blue sprigs



2000  
applied silverwork pattering on side panels  
lettering in cursive on white enameled roundel

## George Bernard Shaw

privately commissioned



blue enameled applied silverwork pattering on side panels

## ship

privately commissioned



AJP - Birmingham



## Skilled Hands for Independence 4<sup>th</sup> July 1977

These first appeared for sale in the US thimble catalogues by Roz Belford – *The Collectors Circle* – commissioned for her members. *The Collector's Circle* reserved one Skilled Hands for Independence thimble for presentation to The Daughters of the American Revolution (DAR) Museum in Washington D.C.



PS – Birmingham – 1977/1978

issued in celebration of Independence Day, July 4, 1977  
depicts a seamstress mending uniform of a colonial soldier  
limited to **1000** – only **80** were painted  
(information from PS)

## South Dakota Homestead

privately commissioned (Linda Shaneyfelt)



interesting apex decoration

## The Straw Hat

privately commissioned  
see also Girl in a Straw Hat



G&N – Birmingham – 2008  
applied silverwork patterning on side panels  
lettering in cursive on white roundel with rose

## T.C.I. Convention 1986

privately commissioned (Inez Oaktree)



commissioned by the Dutch thimble collector  
for the Philadelphia TCI Convention  
the apex appears to be of a brass colour – it is silver

## Taj Mahal

privately commissioned (Linda Shaneyfelt)



JS&S – Birmingham – 1976  
enamelling right to the rim



# Thanksgiving

annual thimbles

These first appeared for sale in the US thimble catalogues by Roz Belford – *The Collector Circle/The Sewing Corner* – commissioned for her members.



1975

JS&S – Birmingham – 1975

showing the Pilgrim Fathers – and the turkey  
enamelling right to the rim



1976

enamelling right to the rim

R: mirror-image



1977

JS&S – Birmingham – 1977

lettering in cursive  
signed 'PS' in white



enamelling right to the rim  
 2<sup>nd</sup> L: woman in a mop cap



1978  
 lettering in cursive



1979  
PS - Birmingham - 1979 (E)  
 lettering in cursive  
 limited to **200**

## Margaret Thatcher



1.

'The RT Hon Margaret Thatcher Prime Minister 1979'  
 lettering in capitals on white roundel  
 blue enamelled applied silverwork patterning on side panels



2.

'Margaret Thatcher Prime Minister 1983-1987'  
 applied silverwork patterning on side panels  
 lettering in cursive on white roundel, with a rose





3.



PS – Birmingham – 1984

'To Commemorate Margaret Thatcher 3<sup>rd</sup> Term of Office 1987'  
 applied silverwork patterning on side panels  
 lettering in cursive on white roundel with green ground  
 commissioned by Thimble Society of London  
 all portraits seem different – top R no curl on R forehead?



4.

PS – Birmingham – 1982

'To Commemorate Margaret Thatcher 10 years as Prime Minister 1979-89'  
 applied silverwork patterning on side panels  
 lettering in italics on white roundel



5.

'The Rt Hon Margaret Thatcher Prime Minister 1979-90'  
 applied silverwork patterning on side panels  
 lettering in cursive on white roundel



6.

'Baroness Thatcher Prime Minister 1979-1990 25<sup>th</sup> Anniversary 2004'  
 applied silverwork patterning on side panels  
 lettering in cursive on white roundel

## To the Bride

annual thimbles

These first appeared for sale in the US thimble catalogues by Roz Belford – *The Collector's Choice/The Sewing Corner* – commissioned for her members.

Was there a 1977 thimble issued by PS in this series?

According to CC the 1977 set was painted by Chris Harmer, whose initials appear below the bride's frock.  
(photos included in the introduction)



1975

JS&S – Birmingham – 1975

enamelling right to the rim

signed 'P.Swingler' or 'PS' (alongside bells at R)



1976

JS&S – Birmingham – 1976 (B)

enamelling right to the rim

limited to **6**



1978

enamelling right to the rim





1979

## Queen Victoria

see also: Kings and Queens of England  
both privately commissioned



1.

applied silverwork patterning on side panels



2.



PS – Birmingham – 1976

Prince Albert and Queen Victoria  
boxed pair

applied silverwork patterning on side panels over black ground  
there is a patterned rim to the portraits  
handpainted roses complete the white panel on the verso



3.



PS – Birmingham – 1982

'Queen Victoria Prince Albert'  
lettering in cursive

applied silverwork patterning on side panels over black ground  
there is a patterned rim to the portraits  
handpainted roses complete the white panel on the verso



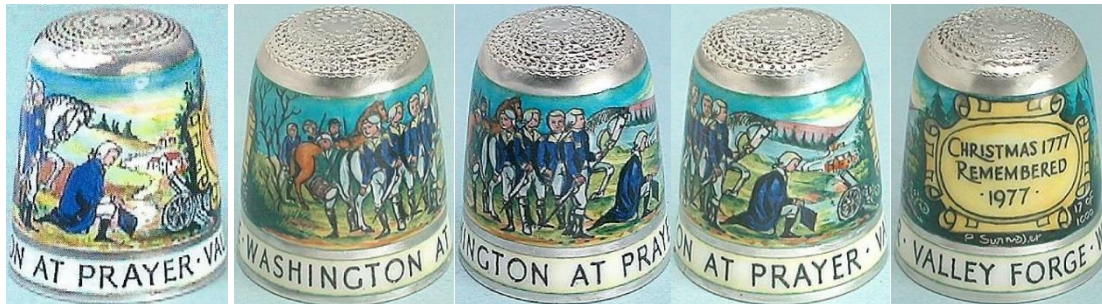
## George Washington

These first three designs appeared for sale in the US thimble catalogues by Roz Belford – *The Sewing Corner*, spring 1978 – commissioned for her members, to commemorate the Bicentenary of Independence 1776-1976.

There are many versions of the 'Washington Crossing ...' design over the years  
see also: Presidents of America



1.



PS - Birmingham - 1978

'Washington at Prayer Valley Forge/Christmas 1777 Remembered 1977'

upper R: the prototype offered by The Collectors Circle in 1978. The date on the verso is placed differently limited to **25**



2.



JS&S - Birmingham - 1973 - 1976 - 1977

'Washington Crossing the Delaware 1776'  
based on the painting by Emanuel Leutze



signed 'P.Swingler' in white/'PS' on lower right next to scroll  
 limited to **25**  
 also offered for sale by Jean Shoup, Thimbles Only, winter 1984  
 offered as a special prize by The Thimble Guild in February 1995



3.



C: PS – Birmingham – 1984

4.



tho the longer indentations are the same as the thimbles above, there is a white enamelled band with the lettering in cursive



JS&S – Birmingham – 1974/1976  
 'George and Martha Washington'  
 'Independence 4<sup>th</sup> July 1776'

(another not shown is for 1975 with JS&S hallmarks, marked 'Jerusalem Silver' in the apex with a rolled rim)

limited to **25**

signed 'PS' in the right leaf of the wreath

5a.



JS&S – Birmingham – 1973/1976  
 'George and Martha Washington'

'Independence 4<sup>th</sup> July 1776'  
missing buttons on R lapel



**5b.**

JS&S – Birmingham – 1973  
collar is erect – with larger figures than 1976 versions



**6.**

G&N – Birmingham – 2005  
'George Washington President 1789-97'  
applied silverwork sides' pattering  
lettering in cursive on white roundel  
similar to the Presidents of America set. It has no navy blue rim which identifies that set



**Prins Willem III & Princes Mary II 1688-1988**  
 commissioned by Kay Sullivan of *De Vingerhoed* in The Netherlands



**PS - Birmingham - 1988**

'Prins Willem III & Prinses Mary II Nederland - Engeland 1688 1988'  
 lettered around royal blue enamelled band - blue enamelled medallion with the official emblem for the  
 tercentenary (300 year) celebration of their marriage on verso  
 a double portrait in one roundel  
 with a sprig of leaves on each side of the portrait  
 see also: Kings & Queens - William III

## Prins Willem Alexander and Prinses Maxima 2 Februari 2002

privately commissioned (Anne Jansen)



Dutch Royal wedding  
applied silverwork sides' patterning

## HRH Prince William



1.

'To commemorate the birth of H.R.H Prince William of Wales June 21<sup>st</sup> 1982'  
with his mother Princess Diana  
applied silverwork sides' patterning  
lettering in cursive on white roundel



2.

commemorating 'The Royal Wedding of Prince William & Catherine 2011'  
lettering in cursive on blue enamelling  
limited to **20**

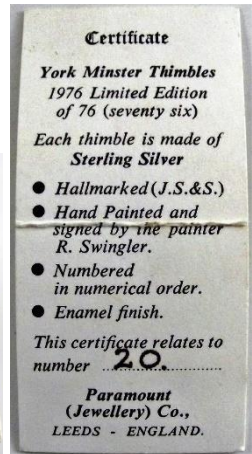


3.

commemorating 'Prince William to Catherine The Royal Wedding'  
lettering on white enamelled rim  
'29<sup>th</sup> April 2011' on white and blue enamelled ribboning on verso  
a double portrait in one roundel



## York Minster 1976



JS&S – Birmingham – 1976  
enamelling right to the rim

lower R: a boxed example with accompanying certificate  
from jeweller Paramount (Jewellery) Co, in Leeds  
limited to **76**

## The Young Bull / The Young Bull + Paulus Potter



**1.**  
PS – Birmingham  
lettering in cursive



**2.**  
G&N – Birmingham  
lettering in cursive  
the marks are on the outer rim

## Other Swingler handpainted items

### boxes



G&Co Ld - Birmingham - 1993

'Garrard & Co 112 Regent Street London' lettered on inside base  
sterling box with enamelled lid  
dimensions: 51×27.5×12 mm (the size of a large matchbox!!)  
ascribed scene - **Birkhall** Aberdeenshire in Scotland (not named)  
King Charles III's Scottish home at Balmoral



## References

- Roz Belford *Collector Circle Gazette/The Sewing Corner/The Sewing Circle*  
Bleasdales catalogues. 2016, 2017, 2018, summer 2019, summer 2024
- Mary E Craft and Mickey Waldron photographer *British royalty – thimbles by Peter Swingler*. TCI 2014
- Lydia Hamilton *Enamel thimbles – some history and some examples*. Needlework Tool Collectors Society of Australia Newsletter. April 2011
- Paula Moore *An American commemorative thimble*. Sampler & Antique Needlework Quarterly, vol. 31, June 2003
- Joan Roberts *Report of Peter Swingler's talk at October meeting 'Regalia and thimbles'*. At Your Fingertips January 1999
- Clara Sennheim *My special Johnny Carson thimble*. TCI Bulletin spring 2005
- Linda Shaneyfelt *Peter Swingler*. TCI Bulletin fall 2009
- Norma Spicer *James Swann maker of gold and silver thimbles*. 1997  
Thimble Society of London catalogues  
*Thimbles Only* winter 1984 catalogue  
*De Vingerhoed catalogues*
- Estelle Zalkin *Zalkin's handbook of thimbles & sewing implements*. 1988

## Contributors

Barbara Acchino | Wendi Aguiar | Joanne Blackie-Sew Many Bits | Jenny Bockel | Mary Craft | CyberThimble  
Helen Deruiter | Bertus van den Dikkenberg | Joy Carlsen Earles | Kit Froebel | Elaine Gaussen | Lydia Hamilton  
Linda Heggs | Barbara Hluboky | William Isbister | Anne Jansen | Mildred Jarvis | Friedy Kamp  
Carolyn Meacham-Elegant Arts | Wynneth Mullins | Pat Rich | Ray Nimmo | Andy J Poole | Pat Rich | Mabel Rogers  
Wolf-Dieter Scholz | Irene Schwall | Linda Shaneyfelt | Jean Shoup | Kay Sullivan-De Vingerhoed | Andy Taylor  
Jean Taylor | Valentin Volgin | Mickey Walbrun | Jenny Yuhas

This listing of Peter Swingler thimbles does not purport to be complete or accurate in all aspects.  
Rather it invites comment and contribution to add to our knowledge. My thanks to the contributors.

EMAIL [thimbleselect@bigpond.com](mailto:thimbleselect@bigpond.com) TO SHARE YOUR KNOWLEDGE

© **Sue Gowan**  
**June 2017**