

British royalty on thimbles 1902-1937

I was asked recently whether I would consider completing the British royal family theme for the twentieth century by adding a new topic for the commemorative thimbles for the period between Queen Victoria's reign and the ascension of Queen Elizabeth II.

What a great idea! There aren't many commemorative thimbles made during this era. Charles Iles or later Iles & Gomme of Birmingham would have turned out 100,000s of the cheap souvenir thimbles of plastic, nickel or brass.

I will only feature thimbles made during this period. Many were made in the 1980s for the collectables market. They are outside the scope of this topic.



1) GE VI - Iles Nickel Silver. 2) GE VI - Iles Plastic. GE = George & Elizabeth
3) GR for Georgius Rex - Henry Griffith & Sons

King Edward VII 1902 Coronation

9 November 1841-6 May 1910



Coronation 1902
King Edward VII. Alexandra.
bust portraits
Charles Iles
brass



Coronation 1902
King Edward VII. Alexandra.
bust portraits
Charles Iles
nickel



Edward VII 1902



June 1902
bust of Edward between ER
Charles Iles
brass
the coronation was scheduled for 26 June 1902
but owing to the King's illness it was postponed to
9 August 1902

King George V 1911 Coronation

3 June 1865-20 January 1936



GM 1911

Goldsmiths and Silversmiths Co Ltd [G&S Co Ltd]

band with Coronation procession from Buckingham Palace to Westminster Abbey - with thistle
shamrocks - Coronation crown applied above the band. Herald angel overhead
9ct gold



GM 1911

Goldsmiths and Silversmiths Co Ltd [G&S Co Ltd]

band with Coronation Coach procession from Buckingham Palace to Westminster Abbey - with thistle
shamrocks - 9ct gold Coronation applied crown above the band. Herald angel overhead
size .6

King George V 1932



H.M The King and the Queen

paper portraits in raised roundel

Settmacher

L: zinc

R: oxidised brass with lacquer bands and coloured 'glass' apices

King George V Silver Jubilee 1935



Silver Jubilee 1910-1935
King George V. Queen Mary.
a crown
Iles & Gomms
no rolled rim



Silver Jubilee 1910-1935
King George V. Queen Mary.
a crown
nickel
Iles & Gomms
flat rim



Silver Jubilee 1910-1935
King George V. Queen Mary.
a crown
Iles & Gomms
nickel
rolled rim



Silver Jubilee 1910-1935 King George V. Queen Mary.

a crown
Iles & Gomms
 brass
 rolled rim



Silver Jubilee 1910-1935 King George V. Queen Mary.

bust portraits
Iles & Gomms
 silver
 flat rim

'Silver' is lettered on the rim below the busts
 this is one of the scarcest thimbles by *Iles & Gomms* as they **rarely** created silver thimbles
 the lettering on the thimbles is the same as the 'Silver' sticky label with the celluloid box
 the celluloid box was also made by *Iles & Gomms*

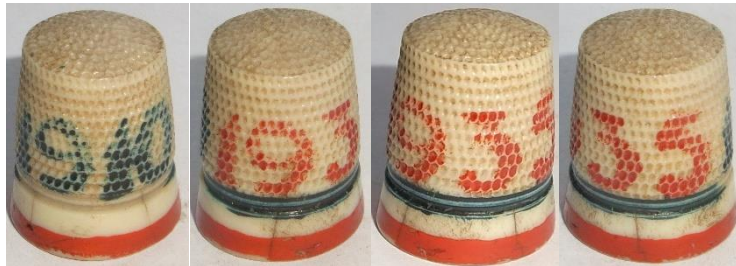


Silver Jubilee 1910-1935 King George V Queen Mary

bust portraits
Iles & Gomms
 brass
 rolled rim



Silver Jubilee 1910-1935
King George V. Queen Mary.
 bust portraits
Iles & Gomms
 nickel
 rolled rim
 box lettered: Silver Jubilee
1910 GM 1935
Thimble
 Made in England Size 2



1910-1935
Iles & Gomms
 ivorine
 handpainted lettering in blue and red
 blue, white and red bands at rim



box lettered: 1910-1935 GM Silver Jubilee
 red and gold crown
Iles & Gomms
 celluloid square thimble box



box lettered: 1910-1935 GM Silver Jubilee
red and gold crown
Iles & Gomme
celluloid heart-shaped thimble box
Made in England lettered on base



busts of Queen Mary and George V
laptop desk brass needlecase made by **William R Avery**
judging by the portraits this could have been manufactured any time during their reign

King Edward VIII 1936 Ascension

23 June 1894-28 May 1972



thimbles with no lettering were produced to commemorate coronation of Edward VIII (which never took place)

Charles Horner
Chester - 1936
sizes 5, 8, 9



H.M. King Edward VIII.
portrait in a cameo
Settmacher
engraving all over
tombac
reeded rim



H.M. King Edward VIII.
portrait in a cameo
Settmacher
engraving all over
silver-plated
reeded rim



H.M. King Edward VIII.
paper portrait in a raised roundel
Settmacher
tombac bullet-shaped sewing kit



H.M. King Edward VIII.
paper portrait in a raised roundel
Settmacher
L: zinc - R: brass



H.M. King Edward VIII.
paper portrait in a raised roundel
Settmacher
nickel bullet-shaped sewing kit

King George VI 1937 Coronation

14 December 1895-6 February 1952



George VI royal cypher



GR

(for Georgius Rex)

a crown between the G and R over striated band

Henry Griffith & Sons

lettered The Spa. Made in England. Sterling + size number around rim
with daisies on top half



Coronation May 1937

King George VI Queen Elizabeth

King's royal cypher and a crown

Iles & Gomms

nickel silver

apex has a star

rolled rim



box lettered: Coronation

King George G VI E (royal cypher) Queen Elizabeth

1937

Made in England Size ...

Charles Iles

box is in red, blue and white



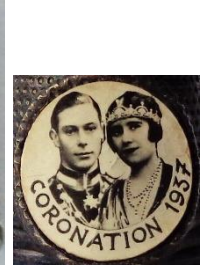
box lettered: HM 1937 gold crown
Iles & Gomms
celluloid rectangular thimble box



Coronation 1937
paper with portraits in a
raised roundel
Settmacher



Coronation 1937
paper portrait in a raised
roundel
George VI only
Settmacher
oxidised brass
yellow lacquered groove



Coronation 1937
paper portraits in a raised roundel
Settmacher
oxidised brass
yellow or green lacquered grooves



His Majesty the King The Queen
paper with portraits in a raised roundel
Settmacher
oxidised brass
blue lacquered groove



G V I E
decaled scene with Coronation coach with George VI's royal cypher
Iles & Gomms
ivorine
blue wavy line



G V I E

decaled scene with Coronation coach with George VI's royal cypher
Iles & Gomms
plastic with rolled rim (later ie post World War II)
blue line



Coronation 1937

paper portraits in a raised roundel
Settmacher
nickel bullet-shaped sewing kit



Coronation 1937

thimble holder with portraits in a framed attachment



Coronation 1937

'Just a Thimble Full R^D707060'
Charles Iles
showing the crowned monarchs



sampler stitched for coronation

References

Elizabeth Aldridge *Thoughts on thimbles. Part V Commemorative thimbles.* TCI 1984
Franz Groiss *Fingerhutfabrik in Wien gegründet 1863 / Thimble factory in Vienna founded 1863.* 1990
Tom J Lawson *Charles Horner of Halifax.* 2002

Contributors

Christina Bertrand | Joanna Blackie-Sew Many Bits | Lynda Herrod | William Isbister | Nicola Kissane | Terry Meinke
Ray Nimmo | Wolf-Dieter Scholz | Kay Sullivan

This listing of British royalty on thimbles does not purport to be complete or accurate in all aspects.
Rather it invites comment and contribution to add to our knowledge. My thanks to the contributors.

© **Sue Gowan**
December 2020