

# Merryfield Pottery thimbles Torquay Devon

2004-

I haven't contemplated a shaped-thimble topic for over twenty years since the Francisca head thimbles topic. These figural pottery thimbles, made for the collectables market, are not functional thimbles but for animal lovers, especially cats, they are of great interest. They are novelty thimbles.

If you collect sets of thimbles, Merryfield too is for you.

Reading from the website, the pottery is set up in their grandfather's former 1960s workshop.



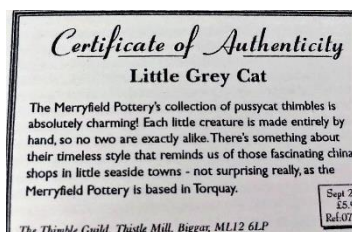
Their thimbles are all made by hand and then handpainted, making each unique. They have a gloss not a matt finish.

No thimble moulds are used yet they still recreate and retain their recognisable shapes.

There is no maker's mark, nor have I found a thimble box: one just recognises the brand by their shape?



unmarked inner views – cats – dog – Morris dancer



TTG certificate

Thimbles range in height from 25-50mm.

TTG started to sell these thimbles from 2004 until 2016.

Merryfield thimbles are still in production today and can be sourced thru their website

<https://merryfieldpottery.co.uk>

Their range other than thimbles includes paperweights and candle snuffers. The latter are made in the same range as the cats. I don't know how one tells whether they are a thimble or a candle snuffer, as there is no handle on the snuffer. Both are impractical in the purpose for which they are used.

The Merryfield Pottery also uses the name Chateau Cats for their cats range.



Merryfield Pottery range of thimbles, paperweights and candlesnuffers



Chateau Cats candle snuffer and box



For other pottery thimble topics see  
Boscastle Pottery thimbles 1980-2020  
Carol Edwards of Coll Pottery and Horizon China thimbles  
Nenthorn Pottery (Scotland) thimbles 1985-1986  
Peter Blanshard (York) pottery thimbles 1970-1980  
Poole Pottery thimbles  
SylvaC thimbles 1979-1982

---

## Cats

Cats feature strongly in the Merryfield thimbles range – some are upright, others seated, some are lying down, and some stretching upwards. Their ears are higher on one side as they lean towards the left or right. Their eyes are mainly painted green.

They can be painted as a cat or kitten - or just identified by their breed.

Then there are the dressed or clothed cats, all with individual names.

I have seen the cats advertised on the second-hand market as Classic or Chateau cats but I don't understand the difference in the terms, in this instance. The Merryfield website uses the term Trendy cats. The outfits are painted in character, with charming details: naïve but easily identifiable with sprigs painted on the outfit to denote their role. The term used liberally in the catalogues is 'dainty' with the quirky details.

### Breeds and named cats

Most are seated cats tho some are lying down, occasionally standing

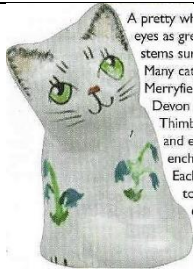


**Black cat**



**Black and white cats**

bottom R: Fireside



**Bluebell**  
TTG December 2006

A pretty w  
eyes as gr  
stems su  
Mary cat  
Merryfie  
Devon  
Thimble  
and e  
ench  
Eaci  
tc



**Buttercup**  
TTG September 2009

W  
pi  
d  
t  
E



**Christmas Frosty**



**Christmas Star**



**Coriander**

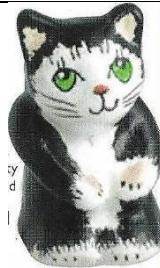
nds  
E



**Coriander**  
TTG January 2005



**Emily**  
TTG May 2006



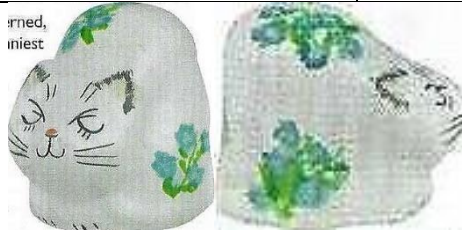
**Felix**  
TTG April 2007

by  
d  
l



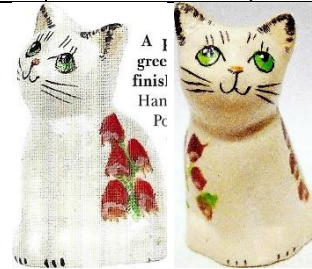
**Flora**  
Wemyss style  
TTG September 2007

t  
E  
F



**Forget-me-not**  
TTG September 2006

rmed,  
iniest



**Foxglove**  
Wemyss style  
TTG August 2004

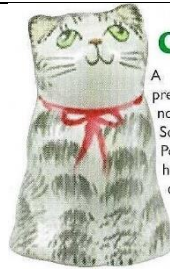
A I  
gree  
finis!  
Han  
Pe



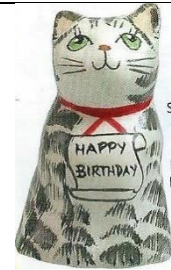
**Ginger cats**



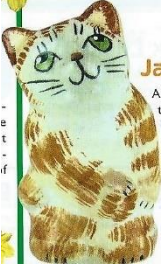
**Good Luck**



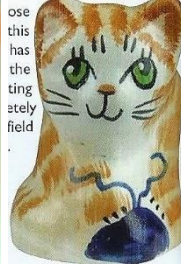
**Green Eyes**  
TTG March 2007



**Happy Birthday**  
TTG JSeptember 2005



**Jasper**



**Knitting**  
TTG June 2007



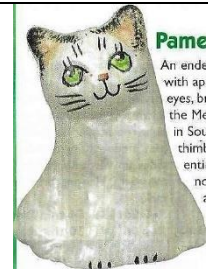
**Lavender**



**Little grey**  
TTG September 2008



**Monday's cat**



**Pamela**  
TTG June 2006



**Playful**  
TTG September 2009



**Poppy**  
Wemyss style  
TTG December 2007



**Saffron the Siamese**  
TTG April 2010/February 2006



**Tuxedo**



**Saffron**



**Samuel grey tabby**



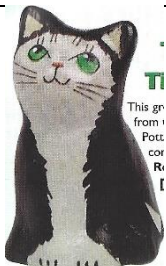
See no evil - hear no evil - speak no evil



Siamese cats



Tabby cats  
lower: Fireside



**Tabitha**  
TTG March 2005



**Thyme**



**Tilly**  
TTG February 2007

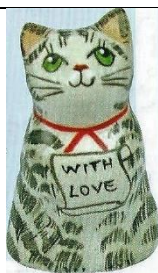


**Tortoiseshell cats**

R: Fireside



**White cats**



**'With Love'**



**with wool**

TTG April 2006

**'Dressed' character cats**

look for the trendy symbols painted onto the clothes - anthropomorphising the cats or kittens which are smaller



**Angel**



**Artist**



**Baking**



**Blue Coat with Muff**



**Bride**

TTG April 2008



**Butler**



**Cappucino**  
TTG April 2008



**Carol Singing**  
TTG November 2005



**Celebration**



**Chef**



**Choirboy**  
TTG August 2008



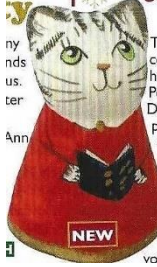
**Christine Cracker**  
TTG November 2012



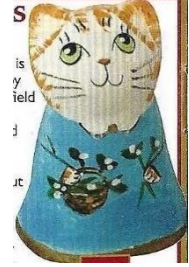
**Christmas Blue Scarf**



**Christmas Cake**



**Christmas Carols**  
TTG November 2014



**Christmas Mistletoe**  
TTG November 2014



**Christmas Red Scarf**



**Christmas Rudolph**  
TTG November 2016



**Christmas Santa**  
TTG November 2016



**Christmas Snowman**  
TTG November 2016



**Christmas Tree**  
TTG November 2016



**Christmas**  
TTG December 2015





**Chef**



**Coronation Jubilee Cat**

50mm

TTG April 2012



**Cricketer**

TTG July 2009



**Daisy**



**Daisy Chain**



**Digging Potatoes**

TTG July 2012



**Doctor**



**Fairisle**



**Fairy**



**Fireman**

TTG September 2011



**Fish 'n Chips**



**Fisherman**

TTG February 2010



**Footballer**



**Gardener**

L: with carrots - R: with daisy  
TTG May 2009



**Gloria the Gardener**

TTG May 2011



**Golfer**

TTG June 2009



**Groom**

TTG April 2008



**Hairdresser**

TTG July 2010



**Hostess**



**Housewife**



**Icecream**



**Jockey**



**Knitting**

TTG May 2010



**Lacemaking**



**Lady Gardener**



**Lavender**



**Maid**



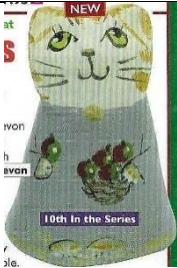
**Male Gardener**



**Mending**



**Flowers of the month**  
see individual cats next



**Apples**  
**November**  
TTG November 2015



**Blackberries**  
**October**  
TTG October 2015



**Catkins**  
**December**  
TTG January 2016



**Cherry Blossom**  
**May**  
TTG May 2015



**Conkers**  
**September**  
TTG September 2015



**Daffodils**  
**March**  
TTG March 2015



**Harebells**  
**August**  
TTG August 2015



**Holly**  
**December**  
TTG December 2015



**Honeysuckle**  
**May**  
TTG June 2015



**Primroses**  
**April**  
TTG April 2015



**Snowdrop**  
**February**  
TTG February 2015



**Strawberry**  
**July**  
TTG July 2015



**Morris Dancer**



**Mr Gardening**  
TTG March 2010



**Mrs Paws**  
TTG November 2010



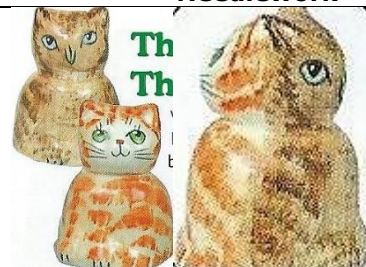
**Musical**



**Needlework**



**Nurse**  
TTG October 2008



**Owl and the Pussycat**  
two characters in one thimble  
TTG October 2005



**Partying**



**Patchwork**



**Penelope**  
TTG March 2012



**Postman**  
TTG March 2005



**Red with Muff**



**Regal**  
TTG May 2016



**Rugby**



**Sailor**



**Sandcastle**  
TTG August 2011



**Santa**



**Santa and Mrs Claws**  
TTG November 2004



**Santa Paws**  
TTG November 2010



**Scottish Female**



**Scottish Female Dancer**  
TTG March 2010



**Scottish Male**



**Seaside**



**Snow Queen**  
TTG December 2004



**Springtime**



**Strawberry Picker**



**Tailor**



**Teacher**



**Tennis**



**Toby**

TTG February 2012



**Toys**



**Valentine Female**



**Valentine male**



**Vicar**



**Victoriab Female**



**Waiter**



**Waitress**

TTG October 2011



**Wine Waiter**



**Winter Black Scarf**



**Winter Blue Scarf**



**Winter Red Scarf**



**Winter Stripy Scarf**



**Winter Stripy Scarf**



**WWI Sailor**  
TTG July 2014



**WWI Soldier**  
TTG July 2014



**Zodiac**  
back view – set of 12  
zodiac sign lettered at rim



**Zodiac Aquarius**  
TTG January 2016



**Zodiac Aries**  
TTG April 2016



**Zodiac Cancer**  
TTG July 2016



**Zodiac Capricorn**  
TTG February 2016



**Zodiac Gemini**  
TTG June 2016



**Zodiac Leo**  
TTG August 2016



**Zodiac Libra**  
TTG October 2016



**Zodiac Pisces**  
TTG March 2016



**Zodiac Sagittarius**  
TTG December 2016



**Zodiac Scorpio**  
TTG November 2016



**Zodiac Taurus**  
TTG May 2016



**Zodiac Virgo**  
TTG September 2016



**Zodiac Scorpio**  
from second set

## Birds

The birds are featured on a plinth, showing their habitat.



**Barn owl**



**Black and white woodpecker**



**Blackbird**



**Blue tit**



**Green woodpecker**



**kingfisher**



**Little owl**



**Long-eared owl**



**Mallard**



**Owl**



**Robin**





**Tawny owl**



**White goose**



**Dogs**



**Border collie**  
TTG January 2005



**Bulldog**



**Dalmatian**  
TTG August 2005



**German shepherd**  
TTG November 2011



**Golden retriever**  
TTG June 2005



**Old English sheepdog**



**Otto the spaniel**  
modelled on Princess Kate's dog  
TTG March 2011



**puppy**



**Spaniel**

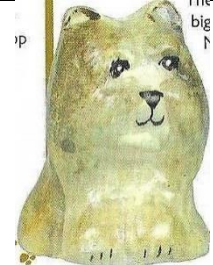




**Springer spaniel**



**West Highland terrier**  
TTG September 2004



**Yorkshire terrier**  
TTG October 2006



### Wildlife

The wildlife characters are featured on a plinth, showing their habitat.



**Badger**



**Dormouse**  
25mm

TTG September 2005



**Frog**



**Ladybird**  
25mm



**Hedgehog**  
TTG March 2005



**Mole**  
TTG December 2005



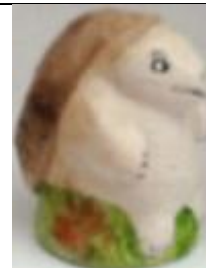
**Otter**



**Rabbit**



**Squirrel**  
25mm



**Tortoise**

## Cottages or villages

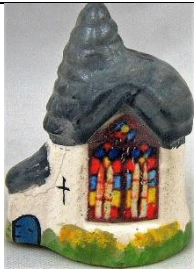
These cottages are probably from real buildings around the south coast of England. Some are named as if from the village. Some include chimneys, front doorsteps, with mullioned windows. Most are thatched, some showing grey thatch.

Sometimes the cottages are in the shape of a teapot – they are listed separately at the end of the cottages.



L: County Parish set of 7 – R: Winter Parish set of 7  
on plinths

 <p><b>'Antiques'</b></p>	 <p><b>'Antiques'</b> <b>'Combe Martin'</b></p>	
 <p><b>'Ashburton Station'</b></p>	 <p><b>'Bakery'</b></p>	
 <p><b>'Beach Shop'</b> TTG August 2004</p>	 <p><b>castle</b></p>	 <p><b>castle</b></p>
 <p><b>chimney</b></p>	 <p><b>Chimney Cottage</b></p>	



church



church



Combe Martin



'Corner Shop'



'Dartmouth Dairy'



double storey



double storey



Fisherman's Cottage



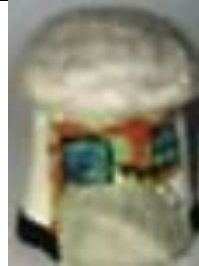
'Fish n Chips'



'Florist'



'Garage'



handrail



'Hotel'



'Lifeboat'



**lighthouse**  
TTG October 2010



**Maypole Cottage**



**Mushroom Cottage**



**Oaktree Cottage**



**Oasthouse**



**'Pastry Shop'**



**Pink Cottage**



**'Post Office'**

TTG September 2004



**Roses Cottage**

TTG September 2009



**'Tea Room'**



**'Teas'**



**'Thimble Inn'**

TTG September 2007



**'Thimble School'**



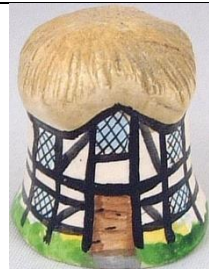
**'Thimbles'**



**tiled roof**



**'Village Store'**



**Tudor Cottage**



**Waterwheel**

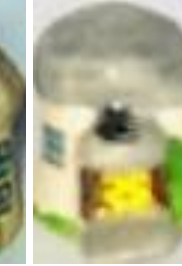
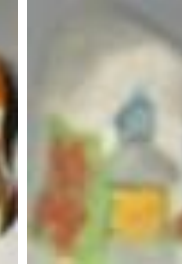
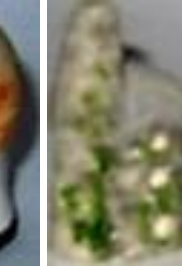
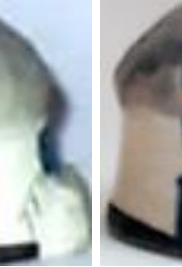


**Well Cottage**



**Windmill**

**Village thimbles**



## Teapot thimbles

Many of the thimbles above are also available in the shape of a teapot thimble



'Bakery'



black door



blue door



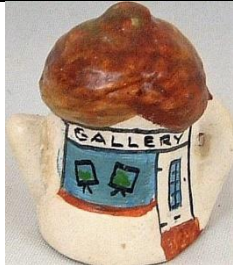
brown door



'Dairy'



Fisherman's Cottage



'Gallery'



'Garden Shop'



ginger cat



Lighthouse



red door



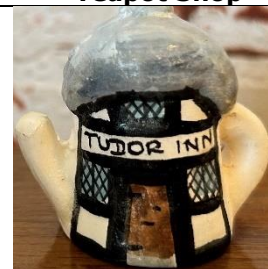
'Teapot Shop'



'Toys'



Tudor Cottage



'Tudor Inn'

**Others**



**Colisseum**



**Cornish tin mine**



**cow  
gardener**



**cow  
walking stick**



**cup cake**  
TTG May 2012



**donkey  
Splash**  
TTG April 2010



**gargoyle**



**monk  
candle**



**monk  
cooking**



**monk  
gardening**



**monk  
hymnbook**



**monk  
sampling wine**



**mouse  
daisy chain**  
TTG August 2013



**Mr Gingerbread**



**Mrs Gingerbread**





**panda**  
TTG June 2005



**sheep**



**sheep**  
Bridget  
TTG August 2010



**sheep**  
flowers



**sheep**  
reading



**Teddy bear**  
TTG September 2004



**Teddy bear**  
brown



**Teddy bear**  
white

### Others - Pincushions



**pincushion**



**pincushion**

### References

Yolanta Bogdziewicz | Pawel Brzyski | Marlous Craane | Linda Heggs | Wanda Ralston-Boulder Bay  
Jean Rose-Miss Mouse | Jean Taylor

This listing of Merryfield Pottery thimbles does not purport to be complete or accurate in all aspects. Rather it invites comment and contribution to add to our knowledge. My thanks to the contributors.

EMAIL [thimbleselect@bigpond.com](mailto:thimbleselect@bigpond.com) TO SHARE YOUR KNOWLEDGE

© Sue Gowan  
September 2024