

# British royalty on thimbles

## HM Queen Elizabeth the Queen Mother

4 August 1900 - 30 March 2002

### Birthdays

#### 75<sup>th</sup> Birthday 4 August 1975



**Peter Swingler (PS)**  
sterling silver & handpainted enamel

#### 80<sup>th</sup> Birthday 4 August 1980



**Caverswall**  
china



**Caverswall**  
china



**Caverswall**  
china  
self-patterned apex



**Highland China**  
fine bone china



**Mount Royal**  
china



**Peter Swingler (PS)**  
sterling silver & handpainted  
enamel

85<sup>th</sup> Birthday 4 August 1985



**Caverswall**  
china  
self-patterned apex



**D J Coggan**  
part-painted china



**Deakin & Francis (D&F)**  
sterling silver & enamel



**Stephen Frost/Warwick Models**  
handpainted pewter  
b&w photo



**Stephen Frost/Warwick Models**  
pewter  
with red plastic bead in crown



**Sutherland/Scotland Direct**  
china



**James Swann & Son**  
sterling silver & enamel



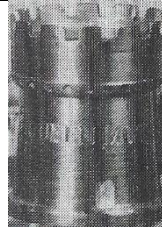
**James Swann & Son**  
sterling silver & enamel



**Theodore Paul**  
fine bone china  
b&w photo



**Woodsetton Peeps**  
brass



**Woodsetton Peeps**  
pewter



china

90<sup>th</sup> Birthday 4 August 1990



**ASL**  
fine bone china



**Jenny Blair Designs**  
silver lacquer designs on handblown glass  
E A M B - L (her initials)  
strings of pearls and Scottish thistle



**Jenny Blair Designs**  
gold lacquer on handblown glass  
E A M B - L (her initials) around apex  
Rose of York



**Tony Bouchet**  
agateware



**Caverswall**  
china



**Fenton**  
fine bone china



**Thomas Kerr Ebbutt (TE)**  
sterling silver  
identical thimble to that by Hamilton & Inches (H&I)



**Hamilton & Inches (H&I)**  
sterling silver  
(made by Deakin & Francis)  
limited to **475**



**Peter Nicholas (PN)**  
sterling silver



**Meycraft**  
fine bone china



**Settmacher**  
copper with applied 90 disc



**St George**  
fine bone china



**Sutherland**  
china



**James Swann & Son**  
sterling silver



**Swann Thimbles/James Swann & Son**  
sterling silver & enamel



**Swann Thimbles (S(T))**  
sterling silver  
1900-1990

commissioned by Thimble Society of London  
this is one of a pair: a matching small size for Princess Eugenie's  
birth 1990



**Swann Thimbles (S(T))**  
sterling silver



**Peter Swingler (PS)**  
sterling silver & handpainted enamel  
commissioned by Thimble Society of London



**Thimbleworld/Shirley Hewett**  
Porcelain  
same image as 1995



**Woodsetton Peeps**  
lacquered brass



**John & Margaret (Meg) Urwin**  
 sycamore  
 set of 12  
 limited to **1990** sets

**93<sup>rd</sup> Birthday 4 August 1993**



**Meg & John Urwin**  
 china

**95<sup>th</sup> Birthday 4 August 1995**



**Birchcroft**  
 china



**Tony Bouchet**  
 agateware



**Julie Menzies**  
 handpainted china  
 crystal in apex  
 limited to **350**



**Felix Morel Bath**  
 lacquered brass & gold-plated  
 limited to **450**



**Sutherland**  
 china  
 purple Swarovski crystal in apex



**Sutherland**  
 china  
 amber Swarovski crystal in apex



**Sutherland**  
 china  
 clear Swarovski crystal in apex



**Thimbleworld/Shirley Hewett**  
porcelain  
same image as 1990  
limited to **2000**



**Woodsetton**  
Queen Mother 95 4 Aug 95  
lacquered brass  
limited to **950**



fine bone china  
laurel leaf  
limited to **2000**

**98<sup>th</sup> Birthday 4 August 1998**



**Julie Menzies**  
china  
(decal)



**Sutherland**  
china



**Swann Thimbles (S(T))**  
sterling silver  
slate apex  
marked '1990-1998'

**99<sup>th</sup> Birthday 4 August 1999**



**Julie Menzies**  
china  
(decal)



**Museum Collections**  
china



**Swann Thimbles (S(T))**  
sterling silver  
stone apex



**Woodsetton**  
Lorraine Bates  
lacquered brass

100<sup>th</sup> Birthday 4 August 2000



**Birchcroft**  
china



**Tony Bouchet**  
agateware



**Connoisseur Collectables**  
china & resin



**Fenton/Babbacombe**  
**China/Blue Waters**  
fine bone china



**Stephen Frost/Warwick**  
**Models**  
handpainted pewter  
also created by Carol Ann  
Miniatures (Isle of Portland UK)



**Peter Ladell (PL)**  
sterling silver



**Julie Menzies**  
china  
(decal)  
set of two  
as Lady Bowes Lyon



**Julie Menzies**  
china  
(decal)  
set of three



**Julie Menzies**  
china  
(decal)



**Museum Collections**  
china



**Sterling Classic**  
china & resin



**Woodsetton Peeps**  
lacquered brass



china



sterling silver



enamelled sterling silver & 18ct gold pairs  
Queen Mother Commemorative Year 1900-2000 on apex (R)  
commissioned by Thimble Society of London

101<sup>st</sup> Birthday 4 August 2001



**Museum Collections**  
china



**Rachel Pugh**  
china  
(decal)



**Woodsetton Peeps**  
lacquered brass  
... our Queen Mother 101 years young



fine bone china



**Sutherland**  
china  
set of six

In Memoriam 30 March 2002



**Tony Bouchet**  
Agateware  
1900-2002



**Stephen Frost/Warwick Models**  
pewter  
with crystals  
14-8-1900 - 10-3-2002



**Julie Menzies**  
China  
(decal)



**Julie Menzies**  
Maplewood  
(decal)



**Museum Collections**  
china



**Rachel Pugh**



china  
set of eight  
(decals)

1<sup>st</sup> as a child – 2<sup>nd</sup> a royal bride – 3<sup>rd</sup> a doting mother - 4<sup>th</sup> a morale boost during the blitz – 5<sup>th</sup> a lover of animals – 6<sup>th</sup> a day at the races – 7<sup>th</sup> a royal grandmother - 8<sup>th</sup> a centenary birthday



**Woodsetton**  
lacquered brass  
Elizabeth Angela  
Marguerite Bowes Lyon  
1900-2002



**Woodsetton Peeps**  
pewter



china



china



fine bone china  
with her coat-of-arms incorporated in design

### In Memoriam 10 years 2002-2012



china

**Others**



**Birchcroft**  
china  
from Royal Ladies set



**Caverswall**  
china



**Caverswall**  
china  
birth of Prince William  
Queen Elizabeth the Queen Mother  
becomes a great-grandmother



**Connoisseur Collectables**  
china & resin



**Connoisseur Collectables**  
china & resin



**Dunheved**  
handpainted bone china  
Sheila Whitcombe



**Dunheved**  
handpainted bone china  
Sheila Whitcombe



**St George**  
fine bone china  
63<sup>rd</sup> birthday



**St George**  
fine bone china



**Sterling Classic**  
china & resin



**Sutherland**  
china  
commemorating 50 years since coronation 1987



**Sutherland**  
handpainted china



china



china



china  
1987

the list of CONTRIBUTORS may be found with King Charles

© **Sue Gowan**  
**October 2006**