

Jacqui and David Parker of Olivia (Birmingham) thimbles 1983-1996, 1998, 2003

The first mention I found of this husband and wife team is in The Thimble Guild (TTG) catalogue of March 1983. The last thimbles were issued in September 1996.

True to form, the error-filled TTG catalogues with maker's names, Jacqui was named Mrs Carol Parker for two thimble issues (I am sure Jacqui soon put them straight, as she was a collector of TTG thimbles). Then they used Mrs Jacqui Parker getting her first name correct. Mrs was dropped a few issues later. David's name only appeared from October 1986.

I found the name of Olivia associated with the Parker name from 1990. Was this their corporate name? I have shown the catalogue maker's name throughout.

Most of the Parkers' thimbles are brass. Initially their thimbles would have been supplied by Iles and Gomms of Birmingham, which they handpainted.

The first thimble painted by Jacqui Parker was made of glass, with several subsequently – and I encountered one of pewter. Towards the end of their thimble life, there were thimbles made of string or twine. Only one was identified as made by Olivia: that is enough for me.

The relevant lettering is uniform and distinctive throughout. During the 1990s personalised thimbles seemed popular and most of their range was available as personalised. The thimbles are all unsigned. This shows, in my mind, the need for this small topic.

The thimble range was mainly created as novelties for the collectables market and not meant for use for sewing. There is a canal boat theme running through their thimbles. Being handpainted, no two thimbles are identical,

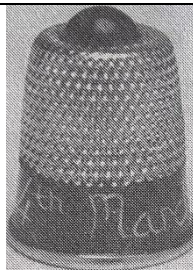
Their production was not prolific over the thirteen year period.

[For other brass thimble topics see](#)

Brass advertising thimbles
Felix Morel thimbles (Bath) 1984-2002
Woodsetton thimbles 1983-2015



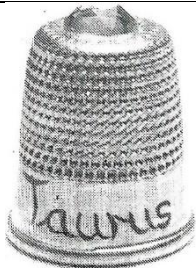
1983 March
Canal roses
fluted rim glass
Mrs Carol Parker
b&w photo



1983 February
signs of zodiac pisces
March
Jacqui Parker
blue crystal in apex



1983 March
signs of zodiac Aries
Aptil
Jacqui Parker
blue band
blue crystal in apex



1983 May
signs of zodiac
Jacqui Parker
personalised 'Taurus' and 'Gemini' 'Clare'
crystal in apex



1983 August
Canal roses
Mrs Carol Parker
various colour bands



1983 December
Canal roses
Mrs Jacqui Parker
personalised 'Eileen'
b&w photo



1984 May
'Happy Harry'
man on holiday
Jacqui Parker
personalised



1984 August
Postbox 1984
Jacqui Parker

1988 August
Olivia



1985 October
phone
Jacqui Parker
personalised phone number



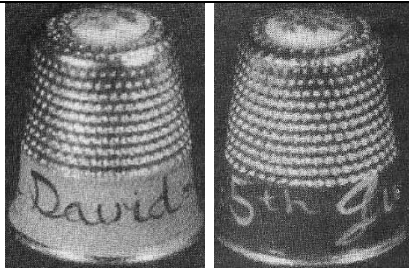
1985 December
Christmas 1985
Olivia



1986 January
'Happy New Year' lettered in red yellow blue green balloons
Jacqui Parker
scalloped rim glass
b&w photo



1986 April
canal roses
Jacqui Parker



1986 May
anniversary
Jacqui Parker
pair: personalised L: name on blue – R: - date on pink
flower on apex
b&w photo



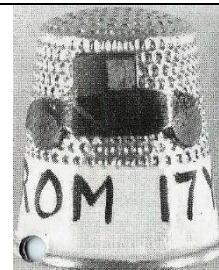
1986
Postbox with letter
'De Vingerhoed 1986'
Kay Sullivan November 1986



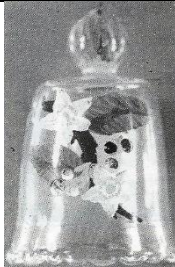
1986 October
Buckby can
Jacqui and David Parker
handle moves



1987 January
red canal roses
personalised 'Susan'
scalloped rim glass
b&w photo



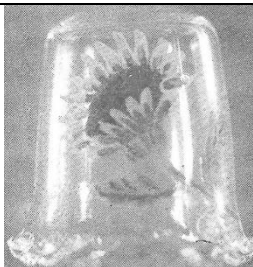
1987 March
red car
Jacqui and David Parker
personalised registration number
b&w photo



1987 April
Apple blossom with apple on apex
Jacqui and David Parker
fluted rim glass
b&w photo



1987 May
Cherry blossom with cherries on apex
Jacqui and David Parker
scalloped rim glass
b&w photo



1987 June
Sunflower
David and Jacqui Parker
fluted rim glass
b&w photo



1988 March
Beach tent
David and Jacqui Parker



1988 February
Canal cottage
Jacqui and David Parker
chimney is hollow – windows and doors are indented giving a silvery look – these show on the inside
limited to 750



1988 November
Happy Christmas 1988
Olivia
personalised



1988 December
Pansy
Olivia
personalised 'Jacqui'



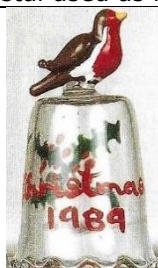
1989 March
Roses
maker not named
string



1989 May
Railway lamp
Olivia
personalised L: 'G.W.R Swindon' (Great Western Railway) – C: L.N.E.R. (London North Eastern Railway) –
R: M. & G.N. (Midland & Great Northern Railway)
crystal used as light



1989 July
butterfly
maker not named
string



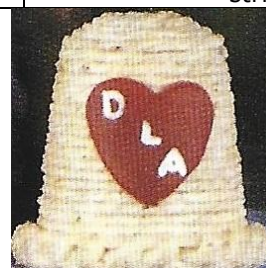
1989 November
Christmas 1989
Olivia
glass



1989 November
Christmas 1989
maker not named
string



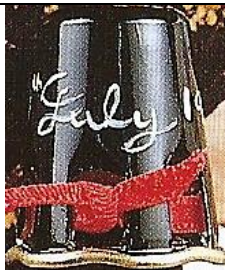
1990 January
Snowman
maker not named



1990 January
Valentine
personalised on red heart 'D loves A'
maker not named
string



1990 February
Mothers Day 1990
Olivia
threaded ribbons
scalloped rim



1990 March
Valentine
Olivia
personalised 'July 19..' scalloped rim



1990 May
Milk bottle
Olivia
personalised 'Co-op Dairy' 'Fresh Milk'



1990 May
Plant pot and base
maker not named



1990 October
Hallowe'en 1990
Olivia
personalised 'Mary'



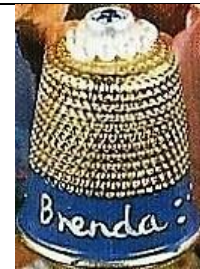
1990 November
Snowman 1990
Olivia
brass saucer



1991 February
Cards
Olivia



1991 March
Horseshoe and heather
Olivia
pewter



1991 June
Marriage
Olivia
personalised 'Brenda : ...'
crystal in apex



1991 June
Money box/Die Sparbank
David Parker



1991 June
Totem pole
David Parker



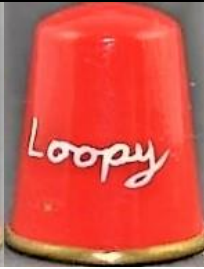
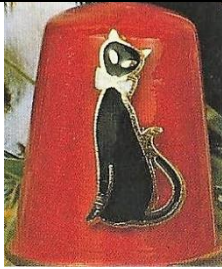
1991 August
Bucket
Olivia
personalised 'Christopher's bucket'
includes spade



1991 November
Merry Christmas
Olivia



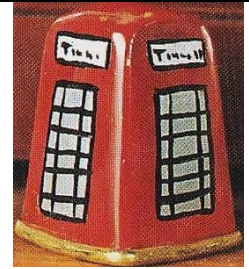
1991 November
Postbox
David Parker
when readvertised for sale in February 2003, it was sold as a Charles Iles & Gomme's thimble



1992 June
Cat
Olivia
personalised 'Loopy'



1993 April
Mouse on clock
Jacqui and David Parker of Olivia
square thimble



1993 September
Phonebox
Jacqui Parker of Olivia
square thimble
personalised with phone
number



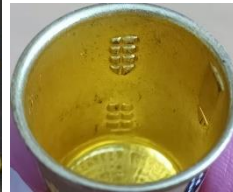
1993 December
crystal ball
Olivia
glitter covered brass



1994 November
Bow
Olivia
string



1995 August
Lottery
Olivia
crystal ball on apex



1995 January
canal cottage
Olivia
string roof
windows are indented giving a silvery look – these show on the inside



1996 September
string
maker not named



1998 November
string
Olivia
green silk rose

and many years later:



2003 August
Canal style
Charles Iles & Gomms thimble
personalised 'Julie'

string canal cottages with applied insects and crocheted flowers
others are entwined with flowers
(created post 1995)



Blue flowers
Olivia



Cottage blue flowers



Cottage crem flowers



Cottage with daffodils



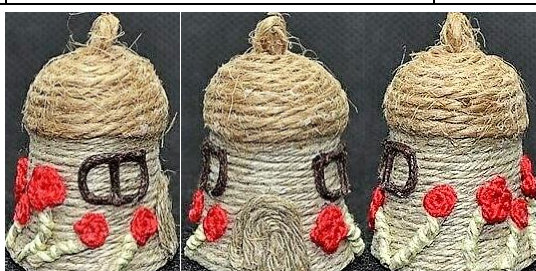
Cottage with insect and red flowers



Cottage with pink flowers and two chimneys



Cottage with poppies



Cottage with red flowers



Cottage with violet flowers



Cottage with yellow flowers



Cottagew ith windmill and purple flowers



lace



poppies



Purple flower

Contributors

Pawel Brzyski | Lin Heggs | Wolf-Dieter Scholz | Jean Taylor | Krystyna Zagajewska

This listing of Jacqui and David Parker thimbles does not purport to be complete or accurate in all aspects. Rather it invites comment and contribution to add to our knowledge. My thanks to the contributors.

EMAIL thimbleselect@bigpond.com TO SHARE YOUR KNOWLEDGE

© **Sue Gowan**
May 2024