

Modern British sterling silver thimble makers

1960 – 2022

I - Z

Charles Iles & Gomms (CI&G)

Birmingham

the Company closed in 1990 – they were sold to Thomas Johnson
neither Charles Iles or Iles & Gomms made sterling silver thimbles 1850-1990



1995
Birmingham
made by: **JS&S**



1995
Birmingham
two maker's marks
MADE IN ENGLAND
made by: **JS&S**

Kenneth James Jack (KJJ)

Birmingham



2000
Birmingham
millennial mark on apex



2006
Birmingham
rope-like rim

K M Silver (KMS)

Birmingham

silverware manufacturing company based in the Midlands, which was founded in 1977



1984
Birmingham



1997
Birmingham
'JUST A THIMBLEFUL'

M Kamin (MK)

Birmingham



1982/1983/1984

Birmingham

similar design to **B&Co - nt - DP - E&Co**



1982/1984/1985/1986/1987/1988/1993

Birmingham

three bands of graduating rings



1984/1985/1986

Birmingham



1987

Birmingham



1992

Birmingham

maker's marks forms part of design
925 & import mark



1995

Birmingham

925 and import mark



1996

Birmingham



2000

Birmingham

925



2000

Birmingham

925



Birmingham

925 + import mark

hallmarks are part of the design



Birmingham
925 + import mark
 hallmarks are part of the design
 faceted rim

Malcolm Knight (MK)

Birmingham



1982
 Birmingham
 floral sprig



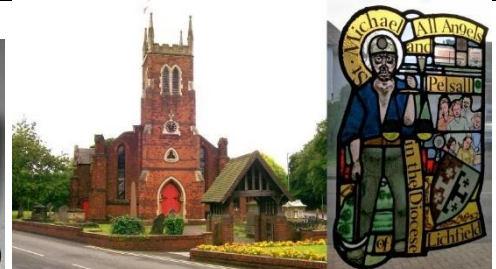
1984
 Birmingham
 GOOD LUCK



1990
 Birmingham
925 and import mark



1993
 Birmingham
925
 Pelsall Millennium Tapestry 1994



St Michael and All Angels Church, Pelsall & The Pelsall Millennium Tapestry, 1994

Peter Ladell (PL)

Luton

Ladlaw Crafts

Peter took commissions in both silver and gold



2000

Sheffield

925

commemorating Her Majesty Queen Elizabeth the Queen Mother 100 years 1900-2000
commissioned by Thimble Society of London

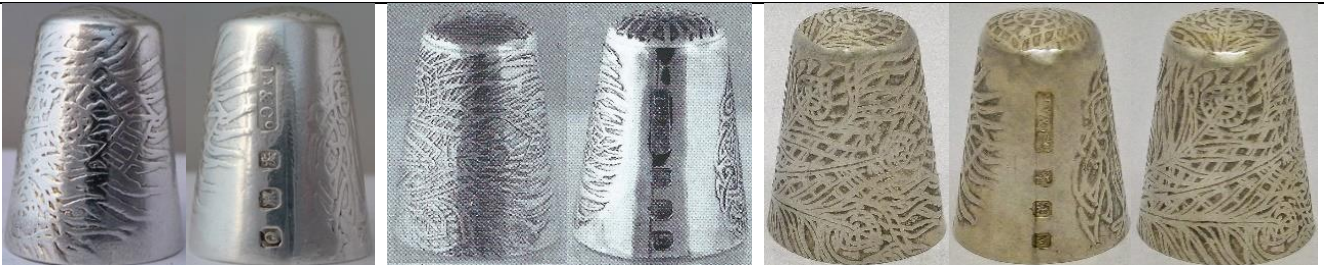
Peter Robert Larratt (PRL)



1979

London

Liberty & Co (Ly&Co)



1987/1988/1989

Edinburgh

Hera feathery design created by Arthur Silver
vertical hallmarks

J.N. Lowe (Sheffield) Limited (JNL)



1978

Sheffield



1978

Sheffield

Montagu Malleon (MM)

West Finchley London



1980

London

raised gold lettering (which is not Arabic)

Geoff Mansell (GFM)

Geoff Mansell is the husband of one of the Thimble Society of London (Midland Group) members. He took up silversmithing in his 70s. The group was started by Norma Spicer for the TSL local members



1992

Birmingham

If you look closely at the shield, you will see a large letter 'T' across the top and between the other letters for TSLMG for Thimble Society of London Midland Group

large assay marks
R: membership pin

William H Manton (WM)

Pittsford Street Birmingham

trading as Birmingham Gold & Silversmiths Ltd

probably made by **JS&S**

where there are no hallmark dates, the thimbles are 2002 stock items



1980s

Birmingham



1982

Birmingham



1982

Birmingham



1983

Birmingham



1983/1984

Birmingham



1983/1995/1996

Birmingham

similar design to **JHB - WHM**



1984/1985

Birmingham

stylised leaves

similar design to **WHM**



1987

Birmingham

similar design to **WHM**



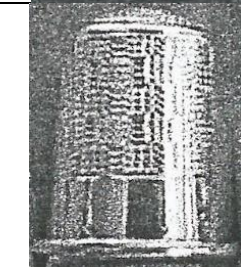
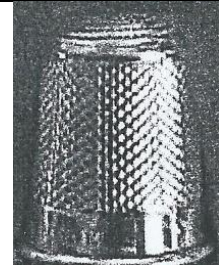
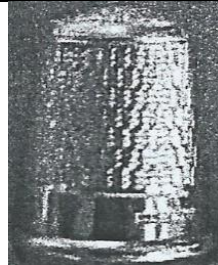
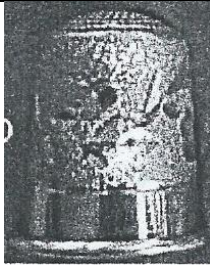
1993

Birmingham

heavy, patterned rim



similar design to **WHM**
probably made by **JS&S**



basketweave pattern

Mappin & Webb Ltd (M^N&W^B)

Mappin & Webb are retail jewellers so the thimbles featured were made by British thimble makers, with the M^N&W^B marks.



1977/1978

London

applied gilt flowers and leaves on stippled ground
similar design to **HOL - TT**



1981

London

commemorating the Marriage of Prince Charles
made by **Gerald Benney** for Mappin & Webb
Spencer Family crest

Henry Booth Marland (HBM)



1987/1988/1991

London/Edinburgh

set with three garnets - ropelike rim
design in art nouveau tradition of Charles Rennie Macintosh
handmade - heavy
limited to **250**



1988

London

applied dragon
handpunched apex

A Marston & Company (A(M)&Co)

Birmingham

probably made by **JS&S**



1981

Birmingham

brushed rim and apex
similar design to **SMCo - REP**



1981 Birmingham

Peter Charles Maxwell-Aylwin (PCMA)

Camberley Surrey



1980

London

strong rim and hand indented apex



Camberley store now closed

Eleanor B McDougall (EBM)

Isle of Mull Scotland



1988

Edinburgh

applied Viking ship

W H Miller (WHM)

Birmingham

trading as Miller Jewellers Ltd
distinctive squat shape
probably made by **JS&S**



1983/1985/1989
Birmingham
Brightcut
L: unindented apex
similar design to **JHB - WM**



1983
Birmingham
Brightcut diagonally



1984/1985/1989
Birmingham
Floral
textured apex



1984
Birmingham
stylised leaves
similar design to **WM**



1984
Birmingham



1984
Birmingham
stylised leaves all over pattern
textured apex



1985
Birmingham
stylised Roses pattern
R: wider indentations on apex - L: more domed





1986/1989
Birmingham
 stylised Acanthus designs over striations
 some with more textured apex
 similar design to **WM**



1986
Birmingham
 Acanthus
 textured apex



1986
Birmingham
 stylised leaves in vertical rows
 textured apex



1986
Birmingham
 Flowers over striations
 Textured apex



1989
Birmingham
 Guernsey coat-of-arms
 similar design to **MG**



1989
Birmingham
 flowers



Birmingham
 similar design to **WM**

Monica Gems Ltd (MGLd)

Norfolk

Monica Vinader concentrates now on jewellery with gems. She has a jewellery store in London (2018)



1999
London
925
kittens



2000
London
applied scissors



Moody & Archer (M&A)

Birmingham



1978
Birmingham
stippled surface
similar design to P&S



Birmingham
delightful blue enamelled band
with strongly petalled flowers



stippled surface



1985
Birmingham
handpainted enamelling by Jo Withers Madeley Telford Shropshire

Paul V Morley (PVM)



1983
London
 gilt sterling silver
 commemorating 1983 Anniversary of Queen Elizabeth
 II's Coronation
 with jewelled thistles, rose and shamrock on stippled
 surface



1987
London
 18ct gold with applied Daffodils and emeralds on two
 raised bands using two colours of gold
 limited to **50**
 commissioned by Thimble Society of London, Autumn
 1987



London
 stippled surface with gilt Bee at apex
 enamelled leaves on rim

National Trust of Scotland (NTS)

Edinburgh

I wonder which Scottish silversmith produced these for the NTS?



1986
Edinburgh
 Celtic design



1986
Edinburgh
 commemorating the Marriage of Prince Andrew to Sarah
 Ferguson
 this was probably made by **PDAC**

Next PLC (nt)

probably made by **JS&S**



1989
Birmingham



1989
Birmingham

Tho these thimble appear to be identical, the maker's marks are different. See topic on Marks on British silver thimbles
similar design to **B&Co - nt - E&Co - MK**

Peter Nicholas (PN)

Peter Nicholas was a company set up by Peter Lunn and Nicholas Plummer. Peter Lunn is a craftsman specialising in spinning, carving and 3 D design. He worked for Stuart Devlin from 1973 to 1983 before setting up Peter Nicholas and Co Ltd which continued until 1991. He now works for himself, mainly to commission and has been involved in education



1990
London

commemorating the 90th (1900-1990) birthday of Queen Elizabeth the Queen Mother
Tudor Rose pattern on apex

Ray Nimmo (RN)

Handmade. Pre-2013 Ray's thimbles were not assayed. Those thimbles were marked Sterling + his maker's mark. Some of these thimbles are one-offs - most of the attributed names or descriptions are by RN. Note the many different thimble shapes used and the many type of rims
Other examples: Placename thimbles from around the world



[2006]



[2006]



[2007]



[January 2008]



[2008]
BIGSWELL



[2008]/2013
Birmingham
 925
 NOBODYS PERFECT



[2012]/2013
Birmingham
 925
 TITANIC



2013
Birmingham
 925
 bulleyes
 with squared patterning on apex



2013
Birmingham
 925
 diamonds
 with circles patterning on apex



2013
Birmingham
 925
 random flowers



2013
Birmingham
 925
 random leaves



2013
Birmingham
 925
 atomic pattern



2013
Birmingham
 925
 Madonna



2013
Birmingham
 925
 Raphael's angel



2013
Birmingham
925
mushroom-shaped



2013/2014
Birmingham
925
based on a Victorian design



2013
Birmingham
925
applied daffodils with bee on apex with bubbly surface



2013
Birmingham
925
Hermes



2013
Birmingham
925
MYRA



2013
Birmingham
925
GOOD LUCK



2014/2016
Birmingham
925
butterfly



2014
Birmingham
925
leaves and berries
with squared circles patterning on apex



2014/2020
Birmingham
925
HOME SWEET HOME



2014/2020
Birmingham
925
DORA



2015
Birmingham
925
Art nouveau girl



2015
Birmingham
925
four leaf clover



2015
Birmingham
925
LOVE (using love heart)
over diamond-shapes all over



2015/2020
Birmingham
925
all over geometric/cubism



2015
Birmingham
925
WISH
Rebus: wish upon a star



2015
Birmingham
large flower
beaded rim



2015/2016
Birmingham
flowers



2015
Birmingham
925
Irish claddagh ring



2015
Birmingham
925
Madonna and child



2015
Birmingham
925
spread eagle



2015/2016/2020
Birmingham
925
'Catch of the Day'



2015
Birmingham
925
owl with moon
owl patterning all round



2015
Birmingham
forget-me-nots



2015
Birmingham
Ichtys symbol



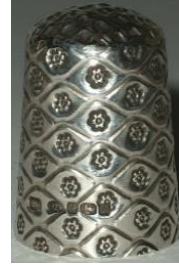
2015
Birmingham
holly



2015
Birmingham
mouse



2015
Birmingham
stylised frog



2015
Birmingham
925
small flowers



2015
Birmingham
dragonfly



2015
Birmingham
925
Lincoln Imp



2015
Birmingham
rose
stippled ground
with circles patterning on apex



2015
Birmingham
leaves
with circles patterning on
apex



2015
Birmingham
hearts



2015
Birmingham
turtle
swirled ground



2015/2020
Birmingham
elephants



2015/2016
Birmingham
925
galleried band



2015
Birmingham
turtles



2015
Birmingham
925
Trinity Celtic knot



2015
Birmingham
925
Yorkshire rose



2015
Birmingham
925
thistle
over circle-shapes all over



2016
Birmingham
925
large leaves and flowers



2016
Birmingham
925
morning glory



2016
Birmingham
925
sheep
textured ground with wire rim



2016
Birmingham
925
Marauding Mouse/meeses



2016
Birmingham
925
dormouse



2016
Birmingham
925
turtle
textured ground



2016/2020
Birmingham
925
'Safari' with zebras



2016/2020
Birmingham
 925
 flowers and leaves



2016
Birmingham
 925
 floral



2016
Birmingham
 925
 Westminster Abbey



2016
Birmingham
 925
 leaves
 textured ground



2016/2020
Birmingham
 925
 donkey with saddle
 R: textured ground



2016
Birmingham
 925
 Scottie dog



2016
Birmingham
 925
 elephant



2016
Birmingham
 925
 frogs



2016
Birmingham
 925
 hedgehog



2016
Birmingham
925
pigs might fly



2016
Birmingham
925
snake



2016/2020
Birmingham
925
Art Nouveau flower pattern



2016/2020
Birmingham
925
Victorian pattering
JOY



2016
Birmingham
925
rosy-posy flower



2016
Birmingham
925
hedgehog atop



2016
Birmingham
925
cats



2016
Birmingham
925
doves in flight



2020
Birmingham
925
'Alien Road Map'



2020
Birmingham
925
MMXX



2020
Birmingham
925
shell/fan



2020
Birmingham
 925

'Swan Lake'
 with articulated swan opening to reveal ballerina



2020
Birmingham
 925

commissioned [one only] engraving all round -
 Master Engraver Keith A Raes [KAR]
 'Three Blind Mice'



2020
Birmingham
 925

commissioned [one only] engraving all round
 - Master Engraver Keith A Raes (KAR)
 'Humpty Dumpty sat on a Wall'



2020
Birmingham
 925

commissioned [one only] engraving all round - Master
 Engraver Keith A Raes (KAR)
 'Hey Diddle Diddle'



2020
Birmingham
 925

commissioned [one only] engraving all round - Master
 Engraver Keith A Raes (KAR)
 'Little Miss Muffet'



2020
Birmingham
 925

commissioned [one only] engraving all round -
 Master Engraver Keith A Raes (KAR)
 'Simple Simon met a pieman'



2020
Birmingham
 925

commissioned [one only] engraving all round - Master
 Engraver Keith A Raes (KAR)
 'The Royal Coat of Arms' 'Dieu et Mondroit'



tortoises with other animals



FOREVER
Marked STERLING

Ari Daniel Norman (AN)

London

Ari Norman was the first and only silversmith to win the Queen's Award for Export Excellence in 1989 and was awarded Freedom of the City of London in 1992 for services rendered to the British silver industry where there are no hallmark dates, the thimbles are stock items – if yours has a hallmark date, please share. From revisiting his range it would seem that Norman imports thimbles and places his maker's mark on them.

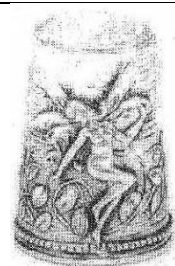
www.aridnorman.com



1982/1987/1989/1991/1992/2000
2008
London
galleried rim
1991 and 2000 have vertical hallmarks



1983
London
turquoise stones and wire work
import mark
Mexico



1983
London
fairies
import mark
Topazio Portugal



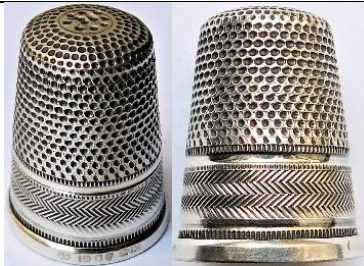
1985
London
HARRODS lettered vertically
with etched flower
galleried rim



1989/1990
London
925
swans
there is an extra mark for the Queen's Award for Export Achievement
an identical design made by **MH**



1988
London
925
filigree
London import mark
Yemen



1988
London



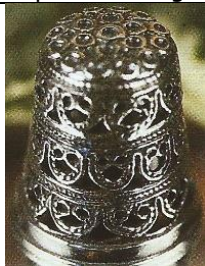
1989/1994
London
marcasite flower attached
galleried band with vertical hallmarks



1990
London
925
London's Houses of Parliament
London import mark
Topazio Portugal



1991
London
925
porcelain Rose Primrose and Pansy applied
vertical hallmarks
galleried rim



1991
London
filigree



1993
London
925
turquoise



1994/2001/2009
London
925
copy of **SF** Medusa Head



1994/1999/2004
London
925
marcasite swallow attached
red ruby eye
galleried rim



1995
London
925
cupids/angels/cherubs



1999 and unassayed
London
onyx and crystals around apex
with crystals at rim - size 3



London
acanthus swirl
London import mark
Topazio Portugal



London
butterfly
London import mark
Topazio Portugal



London
cat
London import mark
Topazio Portugal



London
shamrock
London import mark
Topazio Portugal



filigree
London import mark
Yemen



marcasite fleur de lis attached
galleried rim



HARRODS lettered horizontally





Ari D Norman thimble box London with 2018 set of hallmarks on inner lid

Vita Nutayakul (VN)

Thai Designs Dist. Ltd
Wembley Middlesex



1978
London
Thai design



1979
London
floral etching



Ken Palmer (KP)



1986
Birmingham
nature scene
domed stone
fluted rim



1987
Birmingham
Bees' scene all round
opal inset in apex
fluted rim



1987
Birmingham
rural scene
paua shell in apex
fluted rim

Pattison & Son (P&S)

Thirsk North Yorkshire
still in operation as jewellers in 2023



1983
Sheffield



Geoffrey Payne (GP)



1992
Birmingham

Sheffield Assay Office (SAO)



1996
Sheffield
Whitby Abbey
with Whitby jet apex
see also: Ralph Weston

Douglas Pell Silverware (DP)

Sawbridgeworth

they are wholesalers and most of their thimbles have been made outside of the UK



1989

Birmingham

similar design to **B&Co - MK - nt E&Co**



1990/1997

made by **AN**



2004

Birmingham

925

'Harrods KNIGHTSBRIDGE'



2006

Birmingham

925

applied thurpence



2006

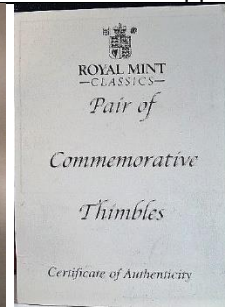
Birmingham

commemorating Queen Elizabeth's 80th Birthday

commissioned by Royal Archives/Royal Mint

500 pairs

design based on 80th Birthday Royal Mint medal



This pair of sterling silver thimbles have been produced exclusively for the Royal Mint to commemorate the Eightieth Birthday of Her Majesty the Queen on 21st April 2006. The design is inspired by the Eightieth Birthday Medal produced by the Royal Mint. Issue of the thimbles is strictly limited to 500 pairs.

How Edwards
Deputy Master

How Edwards
Deputy Master

ROYAL MINT
Llantrisant, Pontyctun,
CF73 5YU
www.royalmint.com



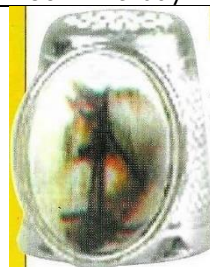
2007

Birmingham

925

bunch of grapes 14 rubies around rim

see similar design **AJP**



2007

Birmingham

925

horse inset



2007

Birmingham

925

leaves - pink flower on apex



2007
Birmingham
 925
 Wedgwood inset with angel

Andrew (Andy) J Poole (AJP)

Birmingham

The Silverware Shop

where there are no hallmark dates, the thimbles are stock items – if yours has a hallmark date, please share



1982
Birmingham



1985
Birmingham
 'Harrods'



2002
Birmingham
 925



2003
Birmingham
 925



2006
Birmingham
 amethyst stones at rim



2006
Birmingham
 925
 applied fish and flowers



2006
Birmingham
 925
 alternating ruby & sapphires stones
 around raised rim



2006
Birmingham
 925
 ceramic rose inset



2006
Birmingham
 thistle



2006
Birmingham
925
hand engraved



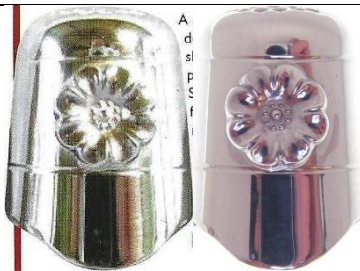
2006
Birmingham
925
applied grapes
rubies around raised rim
see similar design **DP**



2007 Birmingham
anchor



2006
Birmingham
925
pink enamelled flower on apex



2007
Birmingham
flower with dropped rim on two sides



2007
Birmingham
'Welsh Thimblers 2007'
Prince of Wales feathers
limited to **29**



2007
Birmingham
St Christopher



2007
Birmingham
dolphin



2007
Birmingham
commemorating The 10th Conference Dorset Thimble
Society
applied dolphin



2008
Birmingham
seven engraved rings



2009
Birmingham
ceramic rose inset



2009
Birmingham
commemorating 11th Conference Dorset Thimble Society
applied thimble



2011
Birmingham
commemorating 12th Conference Dorset Thimble Society



2012
Birmingham
dragonfly



2012
Birmingham
925
applied grapes



2012
Birmingham
commemorating Diamond Jubilee of Queen Elizabeth II
Jubilee hallmark used as part of design



2017
Birmingham
applied treble clef

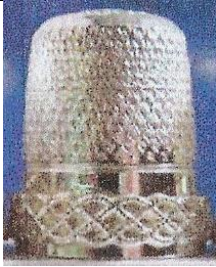


precious stones around
centre



very wide band of oak leaves





garnets form the grapes

precious stones around rim



large flowers



additional mark for **TCG** - commissioned by them

RE Porter (REP)

Bournemouth
probably made by **JS&S**



1981
Birmingham
similar design to **A(M)&Co - SMCo**

Diane Jaqueline Radley (DJR)

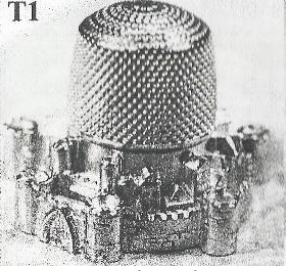
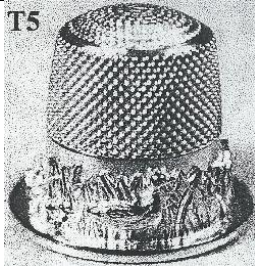

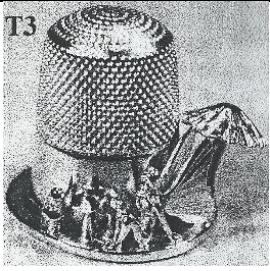
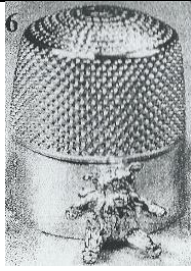
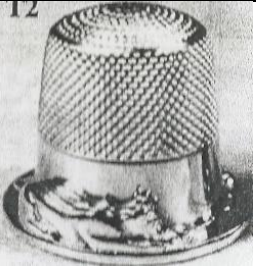
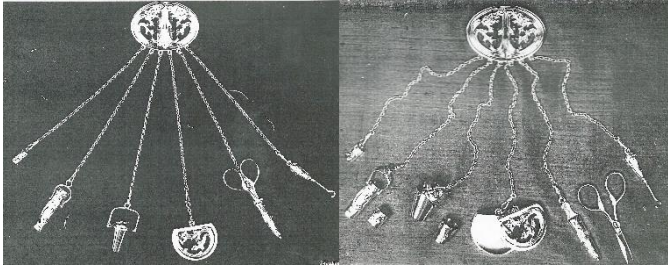


1981
London
stippled surface

Rayment & Hull (R&H)

Isle of Thanet Kent

Neil Rayment and Robert Hull trained at Medway College of Art and Design. They founded Rayment & Hull in 1990 as goldsmiths and silversmiths. They won Designer of the Year in the UK Jewellery Awards in 1994 where there are no hallmark dates, the thimbles are stock items – if yours has a hallmark date, please share they undertook commissions ceased making thimbles in 2002

 <p>T1 medieval applied Gothic castle and turrets around rim</p>	 <p>T5 country Mother Goose and four goslings in rushes around rim</p>	 <p>4 day and night happy faces of sun and moon</p>
 <p>T3 fairy tale fairy resting against a mushroom around rim</p>	 <p>6 memories teddy bear applied to rim</p>	 <p>12 mousing around a game of cat and mouse around rim</p>
 <p>chateleine contains 6 chains of needlework tools including thimble in thimble bucket two views</p>		

Ludwig Redl (LR)

Vienna

Most known for designing the 1984 American Revolution commemorative set. See **GJD** (in part 1 A-H)

The Shakespearian and Wagner Ring sets bear LR maker's marks

Britannia silver, finished in 24ct gold and gilded inside. Plain polished apex and rim

The Ring of Nibelungen set of four with 250 sets planned tho probably only 20 sets produced by 1988.

The Shakespearian is a set depicting three of Shakespeare's plays. They were made in pewter for sale at The Globe - only 50 sets were made in sterling



1983

London

The Last Supper

R: silver-plated bronze



1984

London

Hamlet

To be or not to be that is the question



1984

London

Macbeth

Is this a dagger which I see before me?



1984

London

Romeo and Juliet

Romeo Romeo wherefore art thou Romeo



1984

London

Macbeth

Is this a dagger which I see before me?
sterling silver edition





1984

London

Der Ring des Nibelungen

boxed set of four finished in 24ct gold, showing the four most important scenes in the Wagnerian opera
 [set no] 225 lettered on apex
 REDL lettered in addition to hallmarks



differently boxed set



1984/1985

London

925

Claddagh ring, gilded with 24 carat gold

L: b&w photo



Ludwig Redl at work 1984

Russell C Rimes (RR)

Sheffield

thimbles by this maker exist in copper with stone apexes



1985
Sheffield
mother-of-pearl set flat into apex



1986
Sheffield
unusual indentations on apex



1986
Sheffield
blue stone indented flat apex
© in apex



1989
Sheffield
unusual indentations on apex



Rimes worked as silversmith and spinner in David Mellor's Park Lane workshop in Sheffield for sixty years - 1974

John Ritchie



1986
Edinburgh
Robbie Burns
vertical hallmark

Stephen J Rose (SJR)

London

John and Arthur Rose first registered their mark at the Birmingham assay office in 1932. John Rose was incorporated into SJ Rose and Sons of London in 1972

this maker has distinctively-shaped thimbles – most have a recognisable engine-turned stippled or brushed finish with bright-cut patterning. I have included all examples as each has a slightly different finish - many examples have the hallmarks upside-down, which would be facing the sewer when used on the finger. Sizing 4-6 (15.5mm-17mm)

Some of these size marks are lettered up in the apex

There is a Provisional Patent No **53211** on some of SJR's early thimbles. What was being patented?



1965

Birmingham

Pro.Pat 53211

also available in 9ct gold



1966

Birmingham

Pro.Pat 53211

size 8 in apex

R: marks upside down



1965

Birmingham

Pro.Pat 53211 – size 3
mirror image maker's mark



1966

Birmingham

size 4
marks upside down



1966

Birmingham

Pro.Pat 53211

size 7

marks upside down



1967

Birmingham

marks upside down



1967/1970/1971/1976
Birmingham
 + England (L)
 marks upside down
 two narrow faceted bands



1967
Birmingham
 + England
 marks upside down



1967/1968
Birmingham
 marks upside down



1967/1971
Birmingham
 marks upside down



1967
Birmingham
 + England
 marks upside down



1967
Birmingham
 + England
 two narrow faceted bands
 marks upside down



1968
Birmingham
 handpainted roses on textured band
 two narrow faceted bands
 marks upside down



1968
Birmingham
 marks upside down
 this is a popular design from SJR but
 there are always some differences



1969
Birmingham
 handpainted roses
 two narrow faceted bands
 marks upside down



1969/1970/1974
Birmingham
 two narrow faceted bands
 marks upside down
 R: + 'England'
 L: showing marks to face sewer size 5



1970
Birmingham
 marks upside down
 R: did SJR forget to add the patterning after assaying?
 both sized in the apex for size 1

1971
Birmingham
 marks upside down



1972/1992
Birmingham
 JUST A THIMBLEFUL [R lettering upside down]

1972
Birmingham
 handpainted roses
 [different from 1969]
 two narrow faceted bands



1973
Birmingham
 apices are decorated with a snowflake-type surface
 two narrow faceted bands
 L: marks upside down - R: marked 'England' - size 5 in apex



1973
Birmingham



1975
Birmingham
 patterned apex
 two narrow faceted bands



1975/1982
Birmingham



1976/1982
Birmingham
 stone apex
 size 9



1977
Birmingham
 handpainted stylised flower band
 two narrow faceted bands



1977
Birmingham
 handpainted roses
 two narrow faceted bands
 [different from 1969 and 1972]



1978
Birmingham
marks upside down + size 2



1981
Birmingham



1983
Birmingham
mirror image maker's mark

Margarette Elizabeth Round (MER)



1973
London
well defined glittery surface

David Scott-Walker (DSW)

Sheffield

David's thimbles were also available thru The Thimble Guild in Scotland during 2001-2004. Some of the thimble names are from their catalogues

the set of 32 dated between 1993-2000 has semi-precious stones in the apex and plain polished sides the set depicts the last eight years of British hallmarking as EEC pre-1999 regulations where compliance saw many of the British hallmarks disappear. Shows the assay marks of the four major assay offices. 100 sets each thimble has the hallmark year, the assay office mark, the standard mark (lion passant) and the maker's mark, as part of the design



1993
Sheffield: Mexican crazy lace
London: Brazilian red banded agate
Edinburgh: Brazilian red banded agate
Birmingham: Philippines black mother-of-pearl



1994
Sheffield: Moss agate
London: Blood stone
Edinburgh: Carnelian
Birmingham: Mother-of-pearl



1995
 Birmingham: Opal
 Edinburgh: Blue tiger eye
 London: Red moss agate
 Sheffield: Lapis lazuli



1996
 Sheffield: Bottle green malachite
 Edinburgh: Black onyx
 Birmingham: Blue John
 London: Brown brachated jasper



1997
 Sheffield: Turquoise
 Birmingham: Italian brown onyx
 London: Green banded agate
 Edinburgh: Tiger eye



1998
 London: Namibian blue lace
 Sheffield: Stripy brown agate
 Edinburgh: Turitella
 Birmingham: black and white agate



1999
 Birmingham: Yellow agate
 Edinburgh: Purple agate
 London: Pink agate
 Sheffield: Blue moss agate



2000
925

London: Sodalite
Sheffield: jet
Birmingham: Yellow crazy lace
Edinburgh: Fancy jasper



1982
Sheffield
ring with applied flower
stone apex



1982
Sheffield
ring with applied flower
speckled stone apex



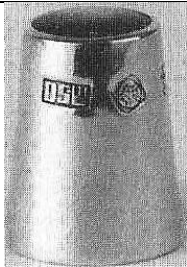
1983
Sheffield



1983
Sheffield
black onyx apex



1983
Sheffield
amethyst



1983
Sheffield
mother of pearl apex



1984
Sheffield
blue John stone apex



1985
Sheffield
mauve stone



1992
Sheffield
stone apex



1992
Sheffield
stone apices R: jet
part of set of 12



1995
Birmingham
Blue John stone



1995
Birmingham
Blue John stone



2000
925
Millennium



2001
zigzag diamond



2001
fern



2001
zigzag



2002
925

commemorating Queen Elizabeth's Golden Jubilee set of 4
using hallmarks with Diamond Jubilee mark as part of design
Edinburgh: Blue agate
Birmingham: Red agate
London: Purple agate
Sheffield: Mother-of-pearl



2003
double scrolls



2003
Sheffield
double scrolls
black stone apex



2004
scrolls



2004
Herringbone



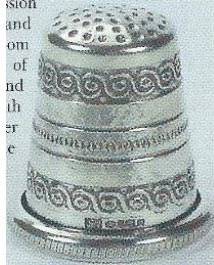
2004
Sheffield
925
black onyx apex



2005
925



black stone
leaves and flower band
black stone



double scrolls



moonstone in apex



red carnelian
stippled surface

Gerald Sheehan (GS)

Llantrisant Wales

created for the Royal Mint

between 2002-2006 Sheehan was the Chief Executive and Deputy Master of the Royal Mint

Set 1: The designs were inspired by the national emblems used on coins

the presentation boxes' ribboning for this set of six Classics is lettered Douglas Pell

Is Pell the maker for these Royal Mint thimbles, using the GS mark as the maker's mark?

limited to **500** sets

thimbles are quite wide having a 20mm diameter

There are other similar Royal Mint thimble sets but they bear no hallmarks, just '925' – included here for completeness



2002/2004
London + import mark
925
 Scotland/Scottish thistle
 taken from Scottish £1 coin



2004
London + import mark
925
 England/Tudor rose
 taken from 1983 £1 coin



2004
London + import mark
925
 Northern Ireland/Irish shamrocks
 taken from Northern Ireland £1 coin



2004
London + import mark
925
 Wales/Welsh leeks
 taken from £1 coin



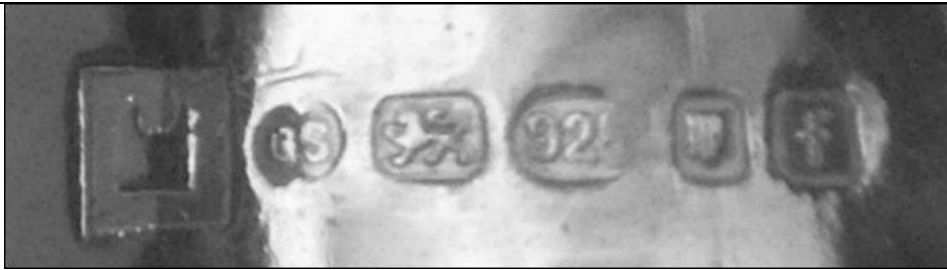
2004
London + import mark
925
 laurel
 wreath taken from the English sovereign coin



2004/2005
London + import mark
925
 Floral
 wreath taken from the English Coronation crown coin



Classics 2004 presentation box set showing Douglas Pell lettered on ribboning



there is an additional mark on the 2005 thimbles – for the Tower of London
 Hallmarks L>R: Tower of London mark – maker’s mark GS – Lion passant – 925 – London’s assay mark of
 Leopard’s head – ‘f’ for for 2005 (Floral)

There is a set of six thimbles featuring historic sites around London
 It’s not known whether they bear any hallmarks. Maybe 925?



Big Ben



Buckingham Palace



Tower Bridge



Tower of London

There are six Royal Mail – marketed as Royal Mint -Classics- thimbles, which are lettered – Clifton Suspension
 Bridge – SS Great Britain – Royal Albert Bridge – Brunel Isambard Kingdom – Paddington – SS Great Eastern
 The thimbles are smooth-sided with the design in relief
 Marked 925



Clifton Suspension Bridge



SS Great Britain



Royal Albert Bridge



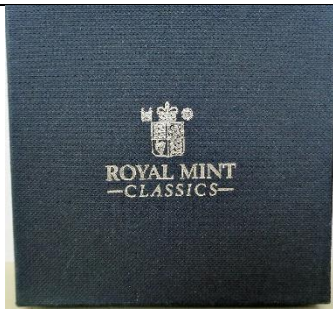
Brunel Isambard Kingdom



Paddington



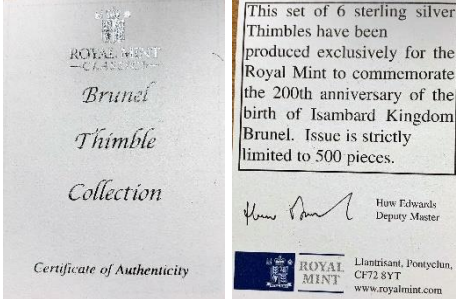
SS Great Eastern



boxed set



open boxed set



There are six Royal Mint Classics, Battle of Trafalgar commemorative thimbles (1805-2005) as a boxed set which are lettered - Nelson - Expects (enamelled semaphore flags) - Victory - October 1805 - 200th anniversary (compass) - Battle
The thimbles are ribbed with the design in relief
Marked 925



Harvey R Sillis (HRS)

Potters Bar Hertfordshire

Sillis' thimbles were also available thru The Thimble Guild in Scotland 2001-2005. Some of the thimble names are from their catalogues

there is a large range in the thimble weights = 9.1-23.2 grammes

additional mark of IPG indicating Sillis is a Fellow of the Institute of Professional Goldsmiths



2001

London

925

Four Panels

14.5 grammes

additional mark of IPG indicating Sillis is a Fellow of the Institute of Professional Goldsmiths



2001

London

925

Pierced Diamond Trellis

9.1 grammes

additional mark of IPG indicating Sillis is a Fellow of the Institute of Professional Goldsmiths



2002

London

925

commemorating Queen Elizabeth's Golden Jubilee - heraldic statues of The Queen's Beasts
five of the mythical beasts are: Unicorn of Scotland - red Dragon of Wales - Griffin of Edward III - Lion of England -
on five sided thimble

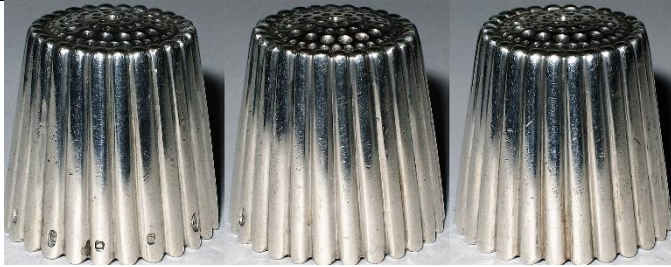
rose on apex and the Golden Jubilee special extra mark

18 grammes



2002
London
925

commemorating Queen Elizabeth's Golden Jubilee
 Scottish Thistle - Irish Shamrock - Welsh Leek on sides - English Rose on apex
 the Golden Jubilee special extra mark
 also available in silver-gilt and 9ct gold
 16.4 grammes



2002/2003
London
925

Cupcake
 hallmarks on each of the 'slices'
 17.4 grammes
 additional mark of IPG indicating Sillis is a Fellow of the
 Institute of Professional Goldsmiths



2002
London
925

Petals
 six-panels like petals with speckles/spots with dished
 apex
 18.5 grammes



2002
London
925

Silver petals
 18.3 grammes
 accompanying certificate has a couple of errors



2003
London
925
Grid

pierced diagonal grid in shape of a square
13.9 grammes



2003
London
925
Thread

23.2 grammes



ey
e
st

2003
London
925
All Square
also available in 9ct gold
18.3 grammes



2003
London
925

21st birthday of The Thimble Guild
cutaway design
16.4 grammes
also available in 9ct gold

additional mark of IPG indicating Sillis is a Fellow of the Institute of Professional Goldsmiths



2004/2005
London
925

Geometric
pierced zigzags
zigzag on apex
additional mark of IPG indicating Sillis is a Fellow of the Institute of Professional Goldsmiths
11.6 grammes



2004
London
925
Surf's Up!
pierced
13.3 grammes



2004
London
925
Ripples



2005
London
925
Battle of Trafalgar
200th Anniversary showing HMS Victory
with anchor in relief on apex



2005
London
925
10th anniversary of the death of Diana Princess of Wales 31.8.2007
L side: roses - R side: hearts - apex: her coat-of-arms



2005
London
925
60th wedding anniversary of Queen Elizabeth and Prince Philip
Diamond set into apex above '60'



2012
London
925

The Diamond Jubilee of Queen Elizabeth 1952-2012
 showing in panels: Royal regalia – HM coat-of-arms – the Coronation Chair
 additional mark on apex of IPG indicating Sillis is a Fellow of the Institute of Professional Goldsmiths
 and the Diamond Jubilee special extra mark



Presented by Harvey K Sillis FIPG
To Her Majesty Queen Elizabeth II
To commemorate both Her
Golden and Diamond Jubilee



N St J Paint & Sons (NSHP)

St Peter's Port Guernsey Channel Isles

they undertook commissions



1999
London

applied gilded Nautilus shells
 four different rims – plain – wavy rope-like – beaded - galiered
 includes Millennium mark

Howard Malcolm Stearn (HMS)



1982
London



1982
London

Sterling Merchandising Co (SMCo)

Kent
probably made by **JS&S**



1981
Birmingham
similar design to **A(M)&Co - REP**



1981
Birmingham



1981
Birmingham



1982
Birmingham

Swatkins Group (P&S)

Walsall West Midlands
probably made by **JS&S**



1979/1992
Birmingham
stippled surface
similar design to **M&A**



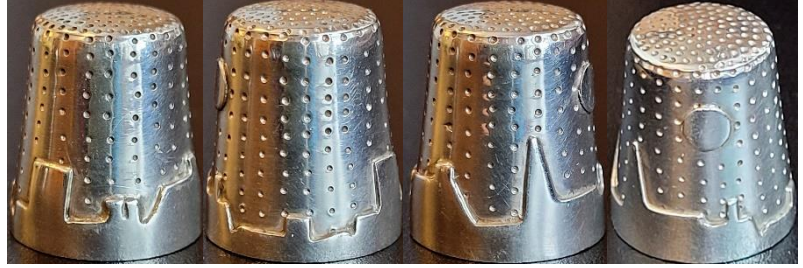
1979
Birmingham

Caroline Marie Taylor (CMT)

London



1979
London
Heavenly Skies



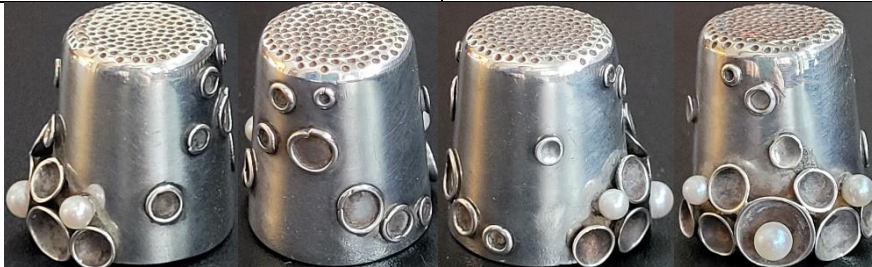
1979
London
stylised skyline



1980
London



1980
London



1980
London
incorporating pearls

Thimble Collectors Guild (TCG)

Biggar Scotland

made by various thimblemakers but when the TCG maker's mark is used, they are only featured here. TCG maker's mark was registered in 1989 for thimbles sold thru their thimble catalogues. This promoted British silversmiths to collectors around the world – Frank Jones of Swann Thimbles was the principal thimble maker during this period in the UK



1989
Edinburgh
made by **PDAC**



1989
Birmingham
Lord's Prayer written on thread thru
needle
daisies apex
made by **S(T)**



1989
Birmingham
applied Coach
daisies apex
made by **S(T)**



1989
Birmingham
A Gift of Love
part of a series recreating Victorian slogan thimbles
made by **S(T)**



1989/1990
Edinburgh
four assay marks as design
made by **PDAC**
limited to **950**
The Guild commissioned one in 9ct gold



1989/1995
Birmingham
made by **S(T)**



1991
Birmingham
made by **S(T)**



1992/1994
Birmingham
made by **S(T)**
his replica of a Dorcas Flora
pattern



1992
Birmingham
made by **S(T)**
his replica of a Dorcas
Diamond pattern



1992
Birmingham
with bands of rubies and diamonds
commemorating 40 Years of QEII's Ascension to
the Throne
made by **S(T)**



1993
Birmingham
 with rubies
 commemorating 40 Years of QEII's Coronation
 made by **S(T)**



1994
Birmingham
 made by **S(T)**



1995
Birmingham
 commemorating 50 Years of VE Day
 made by **S(T)**



1995/1996/1998/1999
Birmingham
 made by **S(T)**



1995
Birmingham
 1996
 with thistles on band



1996/1997/1998
Birmingham
 Windsor Castle
 made by **S(T)**



1997
Birmingham
 made by **S(T)**



1998
Birmingham
 made by **S(T)**
 inscribed 1900-1998
 commemorating Queen Elizabeth the
 Queen Mother's 98th birthday
 with stone apex



1999
Birmingham
 made by **S(T)**



2000
Birmingham
925
made by **S(T)**



Birmingham
925 made by **S(T)**



Birmingham
stone apex
made by **S(T)**

Thimble Society of London (TSL)

made by various thimblemakers for sale to members of the TSL. These commissions provided an outlet for British thimblemakers over the period of 1981-2009. TSL should be congratulated on the huge number of thimbles they commissioned over a nearly 30-year period

the makers' names were rarely revealed to members especially in the early days, tho James Swann & Son (JS&S) were commissioned for many of the TSL commemoratives. I will move (or remove) them from here once the maker's marks have been identified (other than JS&S who was too prolific a thimble maker to feature in this topic)



1982
Birmingham
commemorating first Anniversary of London Thimble Society 1982
malachite or moss agate stone in silver-gilt apex
commissioned by Thimble Society of London
maker: **D&F**



1982
Birmingham
commemorating Raising of the Mary Rose + 9ct gold
commissioned by Thimble Society of London
TSL is engraved under the exact replica of the ship
maker: **JS&S**



1983
applied enamel City of London coat-of-arms
The Thimble Society of London lettering on blue enamelling around apex with 1983 in the centre
1983 on verso



1983
Birmingham
Bernard Weatherill elected Speaker 15th June 1983
'T.S.L.' included as Weatherill was also a member of the Thimble Society of London
Parliamentary mace in relief on verso
tailor's thimble (as Weatherell was from a famous family of tailors – Weatherell Bespoke Tailors)
beaded rim
maker: **JS&S**



1983

Birmingham

applied blue enamelled rosette
commemorating Mrs Thatcher returned General Election
maker: **JS&S**



1984

Birmingham

applied London coat-of-arms
commemorating Dame Mary Donaldson Elected Lord Mayor of London 1983 to 1984
2nd R: 9-ct gold
R: silver-gilt version
maker: **JS&S**



1984

Birmingham

blue, brown or green apex



1985

Birmingham

A Stitch in Time
blue enamelled lettering around band and blue
enamelling on apex
also available in silver-gilt
limited to **60**
maker: **JS&S**



1985

Birmingham

Ted Hughes the Poet Laureate 9th December 1984
blue enamelled lettering around band and blue enamelling on apex
also available in silver-gilt
limited to **60**
maker: **JS&S**



1986
Birmingham
 Her Majesty the Queen 60th Birthday
 maker: **JS&S**



1987
 Quilter's thimble



1989
Edinburgh
 made to commemorate TSL's Annual General Meeting
 TSL applied on the front
 AGM Sep 1989 Cambridge



1990
Birmingham
 hammer and sickle on smooth sides
 Mikhail Gorbachov Nobel Peace Prize Winner 1990



1990s
 Phoenix and Dragon pair
 engraved design



1991
 'TSL 1981-1991'
 10th anniversary with two 'jewels'
 maker: **Greif, Germany**



1992
 commemorating Anniversary of Sinking of the Titanic
 hand-engraved, with sketches
 limited to **500**
 maker: **Refia**



1994
 replica of a mid-17th century Cromwellian
 Commonwealth thimble with T S L in large capitals
 around the body of the thimble
 Roman numerals MCMXCIV for 1994 lettered around rim
 gold edition was offered at the time

Mike and Sylvia Thorpe (T)

Sark Channel Islands

formerly of Clos de Vaul Creux

these handmade thimbles are not assayed but have the T maker's mark on a map outline of Sark.



The makers left Sark in 2000



child's size - measuring 12mm in height, 9mm in diameter
1.1 grammes

Trevor Towner (TT)

12 High Street Petersfield Hampshire

Freeman of the Goldsmiths Company

Towner was apprenticed at 15 for five years as an ecclesiastical silversmith

He then moved to London and worked for Stuart Devlin, the famous Australian-born gold and silversmith

In 1982 Towner opened his own business in Hampshire

<http://trevortowner.co.uk/>



1977

London

roses and leaves

applied gilt flowers and leaves on stippled ground

was the created to commemorate the Silver Jubilee of HM Queen Elizabeth II

similar design to **HOL - M^N&W^B**



1991

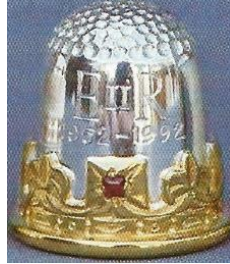
London

'Petersfield'

showing 18th century statue of William III which is situated in Petersfield's market square

this is one of a limited edition - no. 4 lettered on verso (no. 2 is in thimble box)

Petersfield is where Towner has his studio



1992

London

commemorating 40 Years Queen Elizabeth's Coronation

inset ruby

commissioned by Thimble Society of London



2006

London

commemorating Queen Elizabeth's 80th Birthday

silver gilt and rhodium 80 on apex

limited to **100**



2007

London

commemorating Queen Elizabeth's Diamond Wedding
 rhodium plated silver bells on sterling silver or silver-gilt have EIIR on one – PP on the other
 thimbles' limited number above hallmark
 in TT jeweller's box



2011

London

commemorating the Marriage of Prince William
 rhodium plated ribbon William & Catherine 29.4.2011
 seed pearl and cabochon garnet on flowing ribbon are birthstones of the couple – TT lettered on verso
 limited to 100
 thimbles' limited number above hallmark
 in TT jeweller's box



2012

London

commemorating 60th Diamond Jubilee of Queen Elizabeth
 showing the Thames Jubilee Armada
 diamond set in apex
 thimbles' limited number above hallmark
 in TT jeweller's box



Trevor Towner and display of his thimbles
Dorset Thimble Society 2008



Master
craftsman

Gold stars (l to r): Charlotte Hill, Rachel Smith,
Susan Williams, Jill and Trevor Towner, Steven
Edwards, Susan Warren, Emma Blum
Photo by Chris Warren

Jill and Trevor (centre)

Troika Designs Ltd (TD^{LTD})

Birmingham



1982

Birmingham

L: DL - R: DDG in cursive lettering

Malcolm Keith Turner (MKT)

St Giles Street Norwich
some were imported



1996 925

London

import mark
applied elephant
made in Thailand

Lee Tyers (LT)

Nottingham



2004
Birmingham

P H Vogel & Co (PHV&C)

Birmingham



1964
Birmingham
Just a Thimbleful



1972
Birmingham
JUST A THIMBLEFUL 1 1/2 OZ

Laurence R Watson & Co Ltd (LRW)

Sheriff Hutton York

manufacturers of hallmarked silverware since 1966



1981
Birmingham



1983
Birmingham



1984
Birmingham



2001
Birmingham
925
gilt Bee atop beehive shape

Wensum Lodge Silversmiths (WLS)

Norwich



1984 Sheffield

Ralph Weston (RW)

Kells Gold & Silversmiths (Whitby) Ltd

Whitby

Kells Gold and Silversmiths was formed in 1989 on the Island of Mull. Ralph Weston designed a range of Celtic jewellery inspired by the beautiful islands of the Inner Hebrides and the illuminated manuscripts from the Book of Kells. He set the wonderful gems of these islands in his own exquisite pieces of jewellery. He trained and worked in Sheffield and Derbyshire, where he set the unique stone of the area, Blue John and having connections in Yorkshire, hand-cut and set, Whitby jet, supplying many shops in Whitby. Ralph Weston Designs are now based in Eyam Derbyshire

Many of his thimbles are not assayed – simply marked SILVER

see also: Sheffield Assay Office



1997/1999/2000

Edinburgh

Whitby Abbey

with Whitby jet apex

(1997 version at top L is missing maker's mark RW)

bottom: 2000 has 2000 mark + 925



'Silver'
with onyx apex



'Silver'
with backed stone apex
rope rim



'Silver'
rope rim



'Silver'
blue stone
rope rim

John Wightman & Sarah McKechnie Bell (J&SB)

outside **Edinburgh**

they described themselves as amateur lapidaries and silversmiths



1987

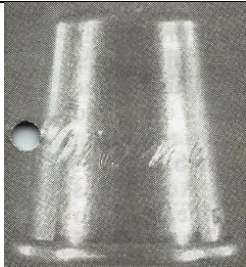
Edinburgh

hallmarks are lettered inside the thimble

Wilkinson Silversmiths (WS)

Birmingham

in 1987 The Thimble Guild in Scotland offered the opportunity to have a first name engraved



1987
Birmingham
DIANA



1987
Birmingham
IVY



1987
Birmingham
MARY

Barry M Witmond (BMW)

Stamford Lincolnshire
goldsmith and silversmith
formed his company in 1976



2003
London
applied Wheat Sheaf

The list of **Contributors** may be found in the A-H listing

© **Sue Gowan**
March 2016