

Modern British handpainted china thimbles

1978-2022

At the start of the modern thimble collecting era of the late 1970s, some of Great Britain's china houses produced handpainted thimbles. This was a time consuming and costly exercise. The demand avalanche for instant and cheaper thimbles swamped thimble manufacturers as we entered 1980. The porcelain houses realised that creating their own decals or transfers using a skilled artist would speed up production and an unlimited number could be churned out.

Initially, companies like Caverswall had their artists hand-touch their designs with spots of paint and you will find artists' names like William Tipton, John Ball, C Nunn, Holmes Gray or Mary Grant named on the thimbles. These are not handpainted thimbles: just hand-touched.

Sutherland, who produced china thimbles the longest, made thimbles in the same way – but didn't even follow the hand-touched route. Some of their thimbles are labelled hand enamelled. Rather a few spots of enamel enhances the design – this is known as champleve. JB, ME and PH Pauline Haughton are initials found on Sutherland thimbles enhanced in this manner.

Royal Worcester, the doyenne of handpainted thimbles from the 1870s, faced the same problem. They did not want to employ more artists and thimbles are time-consuming to paint freehand with at least three firings. In the 1970s, the foreman of the painters' division, Edward Townsend, came up with a solution. He designed a number of outline prints - which were printed onto the blank thimbles. The artists did not have to create an individual painting but merely coloured in the blank design. This speeded up the process noticeably. Even that didn't help as by 1986, the last handpainted RW thimble was painted. They turned to decal thimbles to keep up with demand.

The pendulum did begin to swing back in the 1990s and handpainted thimbles came back into their own in the small numbers as before.

The artists had access to blank thimbles from any source. This would give them creative freedom and some commercial success.

Handpainted thimbles take a while to paint, so they are created in a limited supply.

Many of the artists didn't only paint thimbles – they formed a minute part of their output. They painted vases, plates, brooches, lidded jars, figurines of fauna, paintings, coffee pots, miniatures and handpainted enamel boxes etc.

A few of these artists have painted on wood, glass and silver thimbles and on enamel. They are outside the scope of this topic. Thimbles with handpainted flowers affixed will also not feature here.

[See my topics on specific British painters of china thimbles:](#)

Graham Payne (1981) who employed at least six freelance painters
Gerald Delaney

Jasper's of Yorkshire (Margaret and Mandy Palmer)

Francesca employed at least 16 thimble artists and other character head thimbles makers number 20
Royal Worcester thimble painters

I have featured **32** British thimble handpainters.

When I have fewer than five thimble examples from specific painters – they will follow at the end of the section of thimbles - both in alphabetical order by painter's surname.

Along the way I have learnt heaps – and I can now recognise thimbles painted by these artists. It takes sheer talent to paint accurately on such a small area of china. I hope you will enjoy the journey as much as I have.

For other handpainted thimble topics see

Australian handpainted thimbles
Francesca and other character head thimbles
Gerald Delaney handpainted thimbles
Graham Payne handpainted thimbles
Jasper's of Yorkshire handpainted thimbles
Royal Worcester thimble painters

Anne Blades

Blades was born in Port Talbot in 1953, grew up in Guildford and returned to live in Wales in 1968 she studied industrial ceramics and china painting became her passion in 1984 opened her ceramics studio – Anne Blades Ceramics Anne opened her own shop and gallery, Blades – The Artworks in 1997 in Mumbles (Mwmbwls), Swansea in Wales her thimbles are distinctive in that they have a daffodil design pressed into the apex AB with a date letter is her maker's mark on the inside source: <https://www.anneblades.co.uk/about/>



Caswell Bay



Caswell Bay



holly



Ich Dien



Mumbles Lighthouse



Mumbles Train
unsigned



Three Cliffs Gower



Worms Head

David Bowkett

Bowkett was a Royal Worcester trained artist and worked there between 1948-1962

he moved to Cornwall and bought a pub in the 1970s

David opened his own studio in Devon

he began to paint thimbles in 2002

this is where his RW training came to the fore – using birds and fruit themes painted on bone china

these included the signature on the outside and the traditional sprig on the verso

thimbles have the David Bowkett backstamp and his signature is D Bowkett

Bowkett died in 2009

if there is a small china hook on the back of the item – it is a tiny candelisnuffer – they can be mistaken for thimbles. His figurals have indentations on the head



candelisnuffer



R: his mark for character-shaped thimbles





bird - Kingfisher



choirboy - i



choirboy - ii



cricketer

tho character-shaped, this is not a candlesnuffer
backstamp is slightly different for the character-shaped thimbles
fine bone china



golfer





Gigi Branch

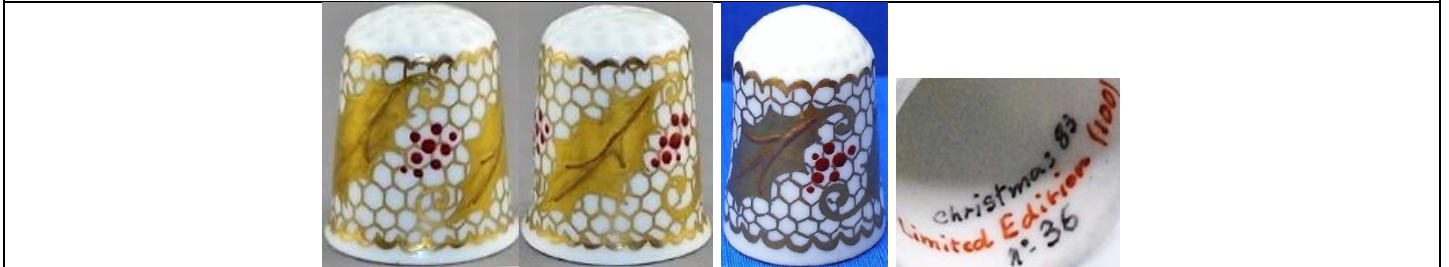
Gigi trained at Limoges in France then settled in Devon
her thimbles only painted in 1983-1984

thimbles signed inside Gigi

see also topic Glass and crystal thimbles for her painting on glass thimbles



Christmas 1983
carollers



Christmas 1983
holly leaves
red enamelling on lace-like ground
dated and numbered
limited to **100**



Forget me nots
May 1983
b&w photo



Prince William 1st birthday
21.6.83
royal symbols painted all round

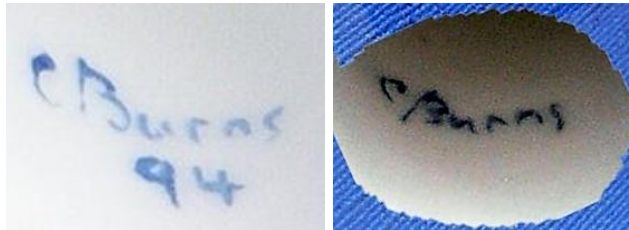


stylised flowers
limited to **150**
August 1984

Christopher Burns

Chris Burns is a Royal Worcester trained artist
 in 1987 when RW were no longer producing handpainted thimbles, Burns opened his own studio in the
 Malvern Hills, Worcestershire
 here he established Harcourt China
 before the use of this mark, the thimbles were marked Malvern England
 he provided thimbles to The Thimble Guild (1987-1994, and again in 2005). I have used the catalogue
 dates

his thimbles are not dated (with one exception in **1994**)
 there is a lovely range of designs capturing the surrounding English countryside. His thimbles evolved to
 sculpt thimbles in relief giving a three dimensional aspect
 thimbles have the Harcourt China backstamp and his signature C Burns is located on the inside
 thimbles are not named - I have used names from the TTG catalogues etc



L: early blue Malvern mark (Type 1) - C: no brand name Handpainted in England (Type 2)

 A stroll thru the woods limited to 200 TTG June 1993	 Autumn fruits TTG November 1990	 Barn Owl TTG August 2005	 bee TTG June 1993
 bird of prey pink ground	 bird of prey pink ground	 Blue tit TTG January 1988	



British garden birds
Blue tit
TTG October 1987
(set of twelve)



British garden birds
Bullfinch
TTG October 1987



British garden birds
Firecrest
TTG October 1987



British garden birds
Goldfinch
TTG October 1987



British garden birds
Robin
TTG October 1987



British garden birds
Sparrow
TTG October 1987



British garden birds
Thrush
TTG October 1987



British garden birds
Wren
TTG October 1987



British garden birds
TTG October 1987



Christmas 1991
TTG December 1991



comet Hale-Bopp



Cottage
TTG October 1998



Cottage
TTG October 1998



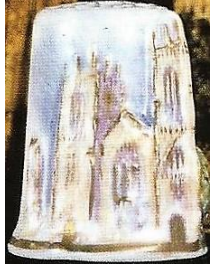
Cottage
TTG October 1998



Cottage
TTG October 1998



English cathedral
TTG December 1993



English cathedral
limited to **450**
TTG April 1992



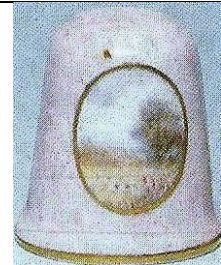
English countryside
set of six on pink ground with cameo scenes
TTG July 1989 - TSL summer 1989



English countryside
blue ground with cameo scene
with tree
TSL summer 1989



English countryside
blue ground with cameo scene



English countryside
pink ground with cameo scene
TSL summer 1989



English countryside
pink ground with cameo scene
Type 2 backstamp



Holly
pink ground with champeved holly
Thimble Society of London winter 1989
limited to **450**
TTG December 1992



Kingfisher with fish
L: type 1 mark



Kingfisher
limited to **200**
TTG June 1988



Ladybird
thimbles have the 1994 dated signature
TTG July 1994



Little owl
limited to **200**
TTG August 1999



Madonna
TTG December 1991



Malvern Hills
1993
panorama scene all round
limited to **375**



Mercat Cross
(street in Wyre Evesham)
limited to **250**
TTG February 1993



Mr and Mrs Owl
TTG July 1992



Peregrine
TTG February 1990



pig
TSL summer 1991



Postbox at Crothorne
(in Evesham)
limited to **375**
1993



robin



robin
pink ground with cameo



Rose cottage
TTG January 1992



Salmon
pink ground
limited to **250**
TTG December 1991



Shepherd's cottage
TTG January 1992



Snowy Owl
TTG August 2005



St Paul's Cathedral
limited to **375**
TTG November 1992
TSL spring 1993



Summer Serenity
TTG June 1990



Thatched cottage
TTG January 1992



The lone shepherd
September 1992



Village church
limited to **250**
September 1991



Wren



Windmill
TTG March 1989
TSL autumn 1990



woman shopping

Peter Carver

I first came into contact with Peter Carver from Solihull in West Midlands in 2013 thru a Canadian thimble collector

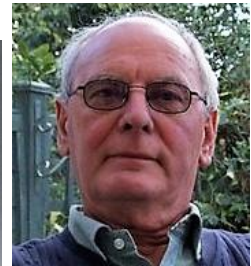
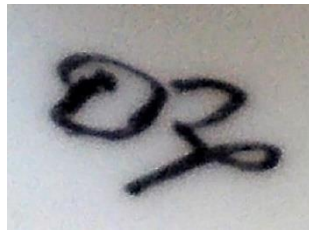
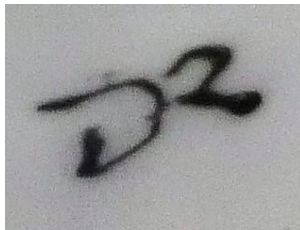
she encouraged Peter to try painting thimbles

Carver's specialty is painting birds – see for yourself his quirky, almost humorous style on his retirement, with interests in professional watercolour painting, furniture restoration and painting enamel boxes amongst many others, with typography and graphic design in his working life, he accepted the challenge

having a kiln, Peter was able to make his own china thimbles – he gilded some of his apexes and these are distinctive as the gold only covers the immediate indentations

he experimented with poly clay, which enabled him to try sculpted thimbles

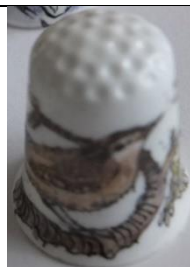
Carver's thimbles are signed PC (but look like DR): you can see for yourself with three examples the thimble names are those of the painter but not lettered within thimble (2013-2014) but thimbles are not dated



Peter also painted on enamel



Badger



bird



Blue tit
cutaway to reveal nest
inside



Book at bedtime
gold painted apex



Christmas 2013



Christmas 2013



Christmas 2013
'Deck the halls with boughs of holly'



Christmas 2013



Christmas robin



Cockerel Moon



Corgis – Monte & Ozzie
painted on commission



dolphin



Fox



Hare



Iron Bridge



Leaves and berries



Leaves and berries



London Bridge



Otter/beaver



Owl



Packwood House



Pheasant



Pheasant



poly clay set of six



Rabbits



Robin



Star Dust



Three rabbits



Tower Bridge



William Morris



William Morris



William Morris



William Morris



William Morris



Wren



Nigel Creed - Ken Russell

Creed is a Master Painter and worked at Royal Worcester in 1963

Russell (1934-2010) was Royal Worcester's last Master Gilder

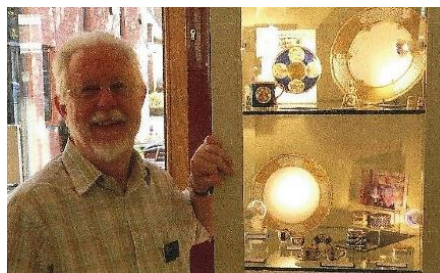
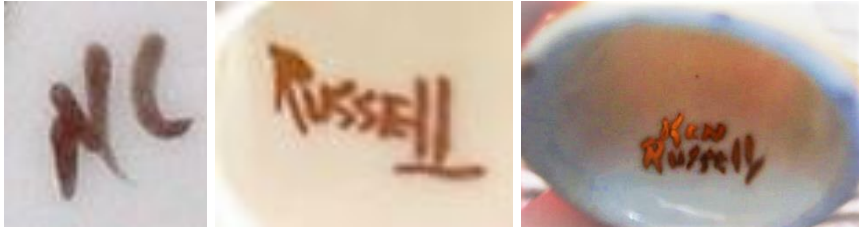
Thimble Society of London commissioned Nigel and Ken to produce handpainted thimbles for sale thru their thimble catalogues (1987-1999)

Nigel signed his thimbles with his initials NC on the outside near the painted part

Ken was the gilder and used 24ct gold. Sometimes the apex is gilded. Russell is signed inside

Ken had retired by 2004. He gilded thimbles for other thimble painters

names used are purely descriptive, not being named by the painters – thimbles are not dated
Royal Worcester collectors will recognise many of these designs as those that came from the factory, given a modern look



Ken Russell 2010



Creed also painted on enamel

 <p>Apple blossom TSL autumn 1993</p>	 <p>Baltimore oriole TSL spring 1994</p>
 <p>Blackburnia bunting TSL winter 1994</p>	 <p>Blue bird TSL autumn 1993</p>



Blue tit
limited to **50**



butterfly



butterfly
TSL winter 1992



butterfly



Cactus wren
TSL winter 1993



Cherokee rose
TSL spring 1994



Christmas
TSL autumn 1990



Chrysanthemum
TSL autumn 1990



Cockerel
TSL summer 1991



Crocus
TSL summer 1991



Daffodil
limited to 50



freesias?



Gold flower
TSL summer 1999



Gold



Gold



Gold
signed Ken Russell



Gold jewels swags
shell pink ground
TSL autumn 1996



Goldcrest
TSL spring 1993



Goldfinch
L: TSL autumn 1990



Imari
TSL autumn 1989



jewelled
TSL spring 1996



jewelled
in panels



jewelled
TSL summer 1996



jewelled



jewelled



jewelled



jewelled



jewelled
TSL winter 1989



jewelled



jewelled



jewelled



Jewels with coral
TSL autumn 1989



Kingfisher
TSL spring 1990



Larch spray
TSL winter 1994



Lattice



Lattice gold
black & white panels
TSL summer 1996



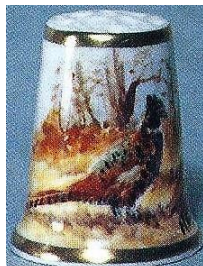
Lattice gold on white
TSL summer 1999



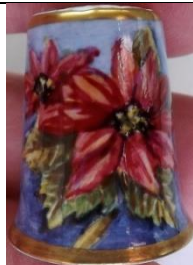
Owl
TSL autumn 1995



Peacock butterfly
limited to **100**
TSL summer 1992



Pheasant
TSL autumn 1991



Poinsettia
TSL autumn 1991



primrose



Ptarmigan
TSL winter 1991



purple flower



Robin
limited to **50**
TSL winter 1989



Rose
TSL spring 1990



Rose
TSL winter 1991



Ruby jewelled
limited to **100**
with TSL mark for Thimble Society of London
TSL summer 1987



Snowdrop
limited to **50**
TSL winter 1989



Thistle
limited to **100**
TSL summer 1992



Tulip
TSL spring 1992



Turquoise jewelled
limited to **100**
TSL summer 1987



Turquoise jewelled
TSL summer 1999



Turquoise jewelling
TSL winter 1989



Turquoise jewels
TSL autumn 1996



Wild lupin
TSL spring 1994



Woodcock
TSL spring 1992



Wren
TSL autumn 1990



yellow flower



yellow flower
TSL spring 1992
rhododendron?



Janice Daughters

Daughters is an artist in Leyburn, Wensleydale North Yorkshire
trained in graphic design, Janice moved from London to set up her studio in 1986, where she was able to
freelance in graphic design

she had developed a love for the countryside, with its flora and fauna
as an added interest, she began to paint on porcelain and china, including thimbles
her signature details are on the inside rim and the date is included (1991-1997)



apples



cottage



Duckling
1991



Duckling
1992



Duckling
1997



Flower garden
1992



Harvest mouse



Poppies



Sheep in Dales
1991



Sheep in Dales

Robert Earwicker

China Cottage, Cornwall
his characters are made of Cornish clay – quirky



Monk friar



nurse



pirate



scarecrow



Teddy bear

Raymond Everill

Everill works out of Lime House Studio in Staffordshire, since he retired from Spode
his trade mark is Raymond Everill & Sons England
you can't mistake his bright pink signature R.Everill
thimbles are not named – some are dated (1988-1989)
the apex is painted with 22ct gold



bird
1989



blackberry
1988



Bullfinch
1988



cherry



Goldfinch



grapes with cherries
1989



grapes



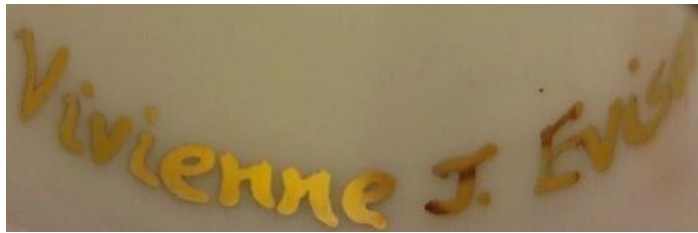
plum



Summer meadow
1989

Vivienne J Evison

Evison runs Lyme Studio in Cheshire with her husband Paul (she was first identified by TTG as Christine)
 her thimbles are of fine bone china finished in 22-24ct gold
 many of her thimbles are painted using precious metals – no two are ever the same
 signed Vivienne J Everill or V.J.E (1992-1997)



After Lowry
TTG June 1996



Earl's golden coronet
TTG September 1995



Lightning
TTG December 1996



Peacock feather

set in precious metals lustre
showing 6 of 7
TTG December 1992



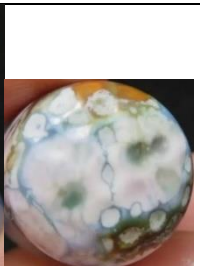
'Amber'



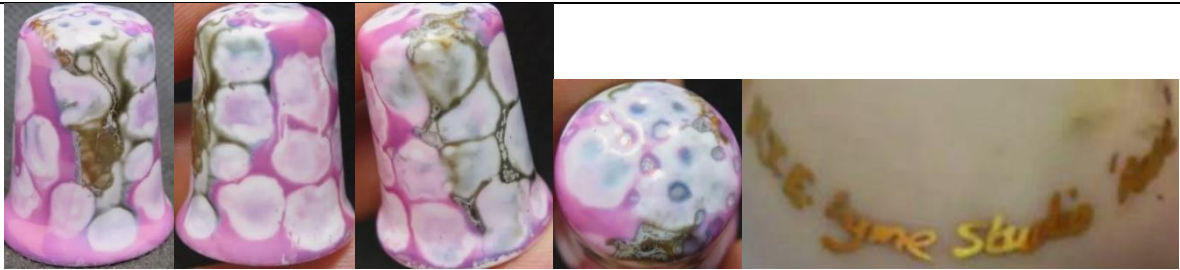
'Garnet'



Malachite



Petrol



'Rose'



'Ruby'



Weights
1/2 lb Mushrooms ...
TTG October 1995



Weights
1/4 lb Tea 125grams (0.275)
TTG October 1995



Weights
1 lb Tomatoes 1/2 kilo (1.1...)
TTG October 1995



Weights
1 oz chillies ...
TTG October 1995



Weights
5 lbs Potatoes ...
TTG October 1995



gold painted apex

Helen Halloran

Halloran worked for Royal Worcester, Halcyon Days and Elliot Hall Enamels
her bone china thimbles are one-off pieces
apexes are painted with 24ct gold
these six flower thimbles are from 2022
not signed



Campion



Celandine



Cherry blossom



Primrose



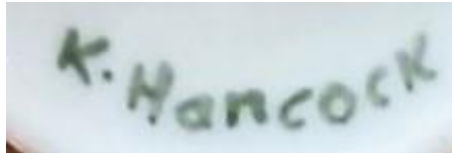
Speedwell



Violets

Keith Hancock

Hancock worked for Sutherland in Stoke-on-Trent and Caverswall, handpainting thimbles for their brand these are not decaled as the bulk of the Sutherland and Caverswall thimbles were they are all signed – and numbered inside when they are limited in number The Thimble Guild commissioned two sets of thimbles from Hancock in 1983 signature is K.Hancock or Keith Hancock. The black signature is signed inside



apples

also available with Swarovski crystal apex



apples

Caverswall



Autumn vale (Four seasons)

limited to **200**

TTG September 1983

Autumn – reaping
1983



Blue tit
Swarovski crystal in apex



flower
green Swarovski crystal in apex



Robin
red Swarovski crystal in apex



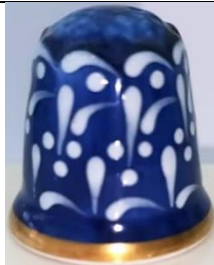
Romany art
green with handpainted enamel
limited to **200**
TTG September 1983



Romany art
maroon with handpainted enamel
limited to **200**
TTG March 1983



Romany art
pink with handpainted enamel
limited to **200**
TTG May 1983



Romany art
blue with handpainted enamel
limited to **200**
TTG July 1983



Romany art
TTG summer 1983
b&w photo



Spring vale (Four seasons)
limited to **200**
TTG April 1983



Summer vale (Four seasons)
 limited to **200**
 TTG July 1983



The red dragon
 more gilding than the TCC Red dragon
 issue
 limited to **1000**
 TTG December 1983



Winter vale (Four seasons)
 limited to **200**
 TTG February 1983



Meissen style – cobalt ground with two different
 cameo scenes



Meissen style – terracotta ground with two
 different cameo scenes

Agneta Hickley

Rimpton Yeovil

her thimbles all have a scalloped gold-painted rim
Hickley's thimbles have painting all round – except her bird thimbles



Blue butterflies
1988



Country cottage
1988



Goldfinch



Hedgehogs
1988



Kingfisher
1988



Kingfisher
1992



Pink flowers
1988



Red butterflies
1989



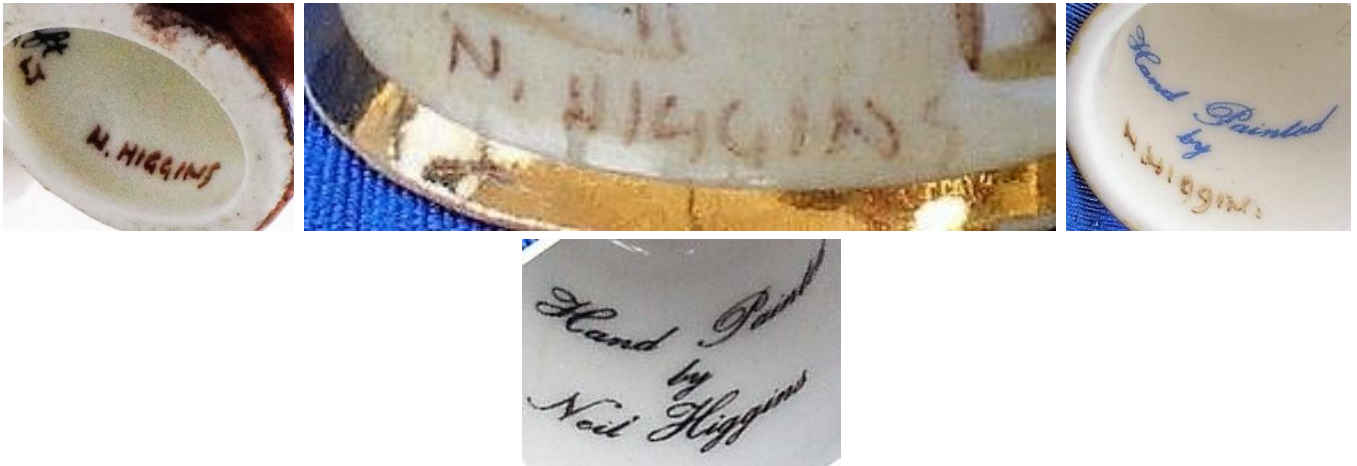
Robin
1989

Neil Higgins

Higgins first came to my attention as the handpainter of the Robin Hood set of six character head thimbles, with the brand name of Healacraft, using the initials of NH inside the thimbles his name has also been associated with Sutherland. I speculate that's where he learnt his skills as a handpainter of thimbles?

Neil's signature of N.Higgins is always lettered in brown in his thimbles and may be found lettered on either the inside or outside

thimbles are not dated - earliest date I have found is 1983 (mail order thimble catalogues). He painted thimbles for a short period 1983-1985, Higgins often uses a blue wash as the ground for his painting Higgins undertook commissions thru The Thimble Guild - including a few of pets he subsequently painted for Staffordshire Enamels (1995)



 <p>'1903 Georges Richard' ltd to 10 TTG July 1983</p>	 <p>'Alpha Romeo BC - 2300'</p>
 <p>bird</p>	 <p>bird</p>
<p>his birds are not named so for an Australian unfamiliar with British birds ... they are named bird</p>	
 <p>bird</p>	 <p>bird</p>



bird



Blue tit



'Bridge House Ambleside'



'Bronte House'
TTG September 1984



building (name illegible)



butterfly



'Carillion Loughborough'



'Chichester'
(Yarn Market)



choristers
with attached pendant loop
limited to **250**
TTG November 1983
b&w photo



cottage



'Derby Cathedral'



'Gloucester Old Spot'



King Charles spaniel



Kingfisher



Labrador



Lapwing



'Pershore'
pink wash



'Portland ram'



'Rippon Cathedral'



'Shakespeare's birthplace'



Snowman
with attached pendant loop
limited to **250**
TTG November 1983
b&w photo



snowman



Springer spaniel
TTG March 1985



'The Bell Tower'
The Thimble Guild commissioned this thimble of the building where their thimble business was housed
TTG June 1983



'The Orchards'



'Thimble Hall'



'Wells'

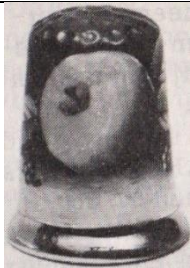


'Womborne Church'

Bruce Higham (BH)

Higham is a ex-Coalport and Staffordshire Enamels (1995) painter
Worcester-based

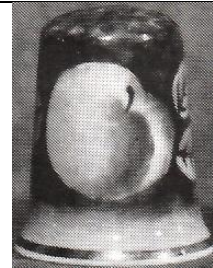
heavily painted gold apices and thick gold painted rims
some seem to have pale lettering on the cream ground



apple
1988
pale green apple on green ground
b&w photo



apple



apple
1989
b&w photo



blossom



cherry



dragonfly



pear

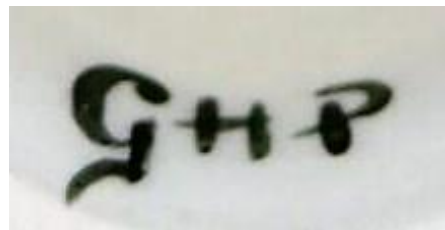
Griselda Hill

Wemyss Ware was founded in 1882 in Fife Scotland. It took its name from a nearby Castle in the 1920s the studio moved to Devon – it closed in 1957

in 1985 Griselda revived the Wemyss Ware® style handpainting to their style at her The Griselda Hill Pottery Ltd® in Kirkcaldy, Fife the most recognisable style has a rim of painted blue scallop - signed inside GHP

<https://wemyssware.co.uk>

thimbles are still produced but currently out of stock. They may be ordered



Hill at L



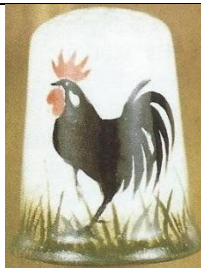
beehive



cats



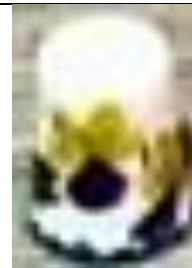
cherries



cockerel



cockerel hen



daffodil



dragonflies



flower



flower



flower



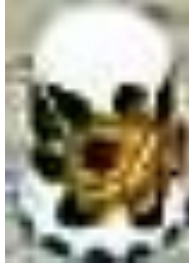
flower



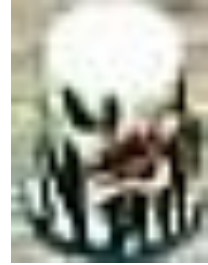
flower



flower



flower



flower



lemon



orange



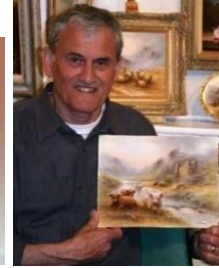
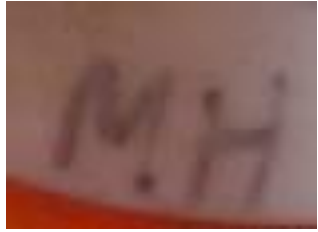
plums



violet

Milwyn Holloway

Holloway (b.1940) is a Royal Worcester trained artist (1954-1971)
 there he specialised in painting birds
 most of Milwyn's thimbles since then have no inner markings
 some examples have a generic backstamp
 the thimble backstamp used is for Claymore Ceramics
 Milwyn's bird thimbles are always signed MH near the bird
 thimbles are not dated, nor are the birds named





Magpie



Nuthatch



Robin



Song thrush



Woodpecker
not in birds' set of 12



Wren



Yellowhammer



not in birds' set of 12



not in birds' set of 12



not in birds' set of 12



Highland cow

Christopher Hughes

Hughes (born 1948) began his apprenticeship with Royal Worcester in 1960 and branched out on his own in January 1980

he has a studio in Holly Green Worcestershire where he painted thimbles from 1987

the backstamp inside the thimble is The Christopher Hughes Collection or Christopher Hughes (later)

his thimbles are signed Christopher Hughes on the outer rim

thimble apices are completely gilded, and sometimes they join the upper gilt line – he uses a thicker rim of gilding than other British painters. All are painted on fine bone china

thimbles are painted all round even if the verso is just a pale matching wash

thimbles are not named, nor dated



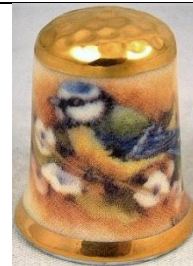
apple



Barn owl
TTG August 2005



Bird of prey



Blue tit



Butterfly



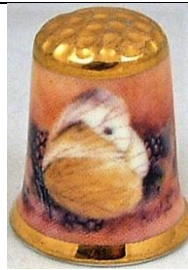
Butterfly



Butterfly



Butterfly



Butterfly
with and without gold apex



Chrysanthemum



Church



Common Blue butterfly
with and without gold apex



Daffodil



Finch



Fuchsia



Harebell



Grouse

R: no gold apex with birds positioned differently
TTG April 2003



Highland cattle
with and without gold apex
L: TTG April 2003



Highland stag
with and without gold apex



Hollyhock



Kingfisher



Little owl
September 2005



Pear with strawberry



Red plum



Peregrine falcon
TTG September 2005



Pheasants
with and without gold apex
TTG April 2003



Robin



Rose



Sheep
with and without gold apex



Snowy owl
with and without gold apex



Sparrow



White plum



Wren

Julie Menzies

Menzies grew up the Biggar area in the lowlands of Scotland
 she was never formally trained in art tho painting was a passionate hobby
 Julie worked in the despatch section of The Thimble Guild (TTG) in Biggar until the owner, Arthur Bell,
 discovered her artistic abilities
 in 1993 she began to handpaint thimbles commissioned and personalised by thimble collectors thru TTG –
 painting their pets, homes, gardens etc
 she specialises in portraits and for five years Menzies was the TGG’s chief thimble artist
 she became their chief designer of art in 1998-2005, which required her to create thimble designs
 these were translated into lithographs or transfers/decals
 tho her thimbles seem to be handpainted, all Menzies thimbles after 1998 are decaled thimbles
 handpainted portraits fill the entire front of thimble – her decal thimble portraits are more cameo sized
 her handpainted thimbles bear the signatures J.M., Julie. M. or Julie Menzies on fine bone china
 with 22ct gold rims
 Menzies can handpaint three thimbles a day – no wonder they were offered in limited editions
 some thimbles will have the backstamp The Thimble Guild
 Julie was also a designer for Sutherland China



Menzies January 1991 and 1999

 <p>90th anniversary 1921–2011 lettered in gold Royal British Legion limited to 250 - ed lettered om verso TTG November 2011</p>	 <p>Alexander Graham Bell limited to 100 TTG March 1997</p>	 <p>Art deco Fruit TTG August 1999</p>
 <p>Art deco Geometric TTG September 1999</p>	 <p>Art deco House on a hill six-sided TTG June 1999</p>	 <p>Art deco turret-shaped apex TTG July 1999</p>



Art deco
TTG October 1999



Best wishes New Year 2005
TTG December 1994



Billy Wright
limited to **200**
TTG October 1994



Burt Lancaster
TTG December 1994



Caernarvon Castle
favourite ship could be personalised
TTG February 1998



children's portraits
portraits could be personalised
TTG October 1993



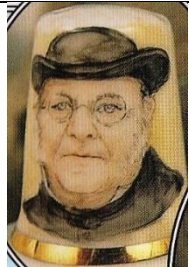
Clydesdale
limited to **250**
TTG March 1997



Colin Macrae (rally driver)
limited to **250**
TTG January 1996



Cross
limited to **200**
TTG March 1994



Donald Pleasance
limited to **100**
TTG March 1995



Doris Speed
TTG December 1994



dream home
your home could be personalised
TTG August 1996



E & S (Edward and Sophie)
19.6.99
there is also a decal version



Fred Perry
limited to **100**
TTG March 1995



garden
your garden could be personalised
TTG April 1994



'Hale Bopp 1997'



'Hale Bopp 1997'

L: first edition which has more detail - limited to 250
 R: city scene - lower: country scene
 two unlimited editions with less detail
 TTG May 1997



Henry VIII
 limited to **75**
 TTG February 1997



Jose Carreras
 commissioned by the singer who is a thimble collector
 TTG May 1994

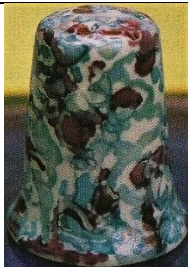


initials

Menzies follows 18th century French designs
 your initials could be commissioned
 limited to **175**
 TTG July 1993



Lustreware



Lustreware
 TTG March 1997



Lustreware
 TTG September 1999



Lustreware
 TTG September 1999



Lustreware
December 1999



Meadow flowers
limited to **100**
October 1996



Neil Armstrong
limited to **150**
September 1994



Montserrat Volcano 1997



North Sea oil
Swarovski crystal in apex
limited to **250**
TTG December 1994



Peace and goodwill
limited to **125**
TTG December 1995



Peace in Northern Ireland
limited to **150**
TTG March 1995



pet
your favourite pet could be
personalised



Queen Elizabeth II 70th birthday
19.4.96
TTG April 1996



Queen Elizabeth II 85th birthday
19.4.2011
limited to **85**
TTG April 2011



Queen Elizabeth the Queen
Mother 95th birthday
Swarovski crystal in apex
limited to **350**
TTG August 1995



Rose
TTG April 1997



Roy Castle
limited to **250**
TTG October 1994



Sam
symbol of the koalas injured in Victorian 2009 bushfires



Scenes of Jubilation 50 years
limited to **500**
TTG April 1995



Snowflake
spot of gold paint in each flake
limited to **150**
TTG January 1997



Soufriere Hills Volcano
Montserrat
TTG October 1997



Strawberry
limited to **20**
TTG August 2016



Teddy bear
baby's name can be personalised
TTG December 2009



The Golden Hind
limited to **450**
TTG March 1996



The Longest Day 50 years
limited to **250**
TTG May 1994



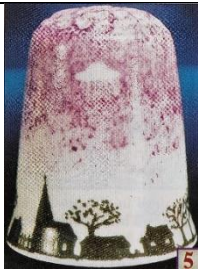
The night before Christmas
TTG November 1996



To a mouse
(after Robbie Burns)
limited to **149**
TTG January 1994



Toy train
baby's name can be personalised
TTG December 2009



UFO
limited to **450**
TTG May 1998



Viva Espana!
limited to **75**
TTG July 1994



West Highland Terrier
favourite pet can be personalised
TTG March 1998



Xmas 1999
pontilist style
TTG November 1999



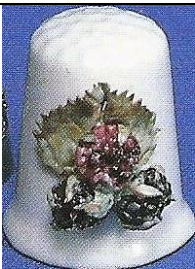
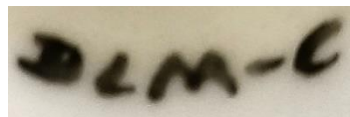
William & Kate 29th April 2011
golden lovebirds
TTG April 2011

Dorothy Mortimer-Coy (DML-C)

Flowercraft
Sponden Derby

former Royal Crown Derby artist

her thimbles are signed inside – further information is on a sticker on base of thimble box



Blackberries
TTG August 1987



Blue poppy



Buttercup



Daffodil



Dog rose
TTG July 1987



Forget-me-not



Pink rose



Scabiosa



pink



Wild rose

Yellow rose

Peter Platt

Platt (born 1935) was commissioned by The Thimble Society of London to paint thimbles in 1990s for sale thru their catalogues

he is Royal Worcester trained (from 1951)

Peter's thimbles, once he left RW, are uniquely his own: plenty of gilding and the subjects are set in an ornate cameo

signature is P Platt which can usually be found in the lowest part of the cameo



EIR 1952 - 1992
gilded by Russell
commissioned by TSL



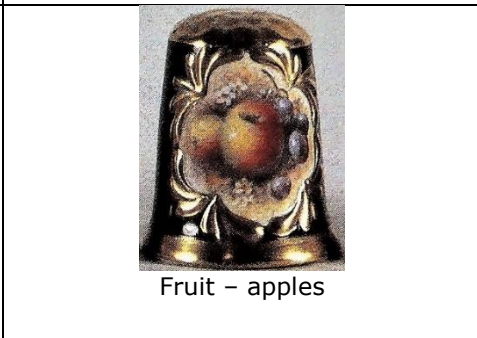
Flowers
gilded by Russell



flowers



Fruit - apples
TSL summer 1991



Fruit - apples



Fruit - apples
TSL summer 1992



Kingfisher
gilded by Russell

Ryoko Ottignon

Ryoko's studio - Ottignons of Norfolk – is in Starston where she is the hand decorator and ceramist
 Ottignon's thimbles are based on copies of Georgian designs from 1780s – designs found on cups and saucers of Lowestoft (1757-1802) and New Hall (1781-1835) porcelain factories
 maker's mark in the form of a sandglass ii burnished gold is painted on the inside
 (it may look like the Roman numeral for ten when the dot isn't clear)

her thimbles require five firings to fix the colours and glaze on the cream porcelain

thimbles are presented in thimble boxes handturned in mahogany and waxed to give an antique patina
 accompanied by a signed, dated and numbered certificate – the list of what else Ottignons retails is listed
 on the verso of each certificat

the glaze has crazed with age on her white thimbles



pattern recurs all round



R: certificate 1978
 see also: white version





R: certificate October 1978



Ladybird

R: certificate July 1978



Rachel Pugh

Pugh handpainted bone china thimbles for The Thimble Guild from September 2000 she was also a designer at TTG from 2000-2005 where her art was translated into decals Pugh was born in Cumbria. She lives in Cyprus where she still designed thimbles for TTG Rachel's signature R.Pugh is on the inside of the thimble, often using gold paint if the thimble is named, it is lettered inside



Ambergate daffodil
gold apex
TTG April 2002



Armistice poppy
gold apex
TTG November 2001



Armistice
TTG November 2000





Autumn
TTG October 2000



Christmas rose
TTG December 2000



Cyclamen
gold apex
TTG October 2002



Daisy field
TTG June 2001



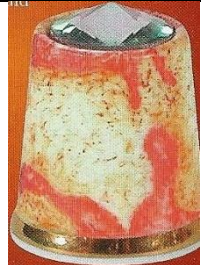
Deck chair
raised paint
TTG August 2004



Dove of peace
textured paint
TTG June 2003



Early snowdrop
raised paint
TTG January 2001



Exploring Mars
Swarovski crystal in apex
TTG April 2004



Frosty snowman
raised matt glaze
TTG December 2004



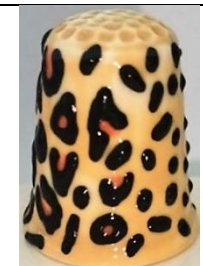
Giraffe
raised patterning
TTG October 2003



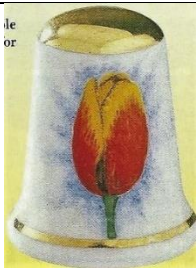
Iris recticulata
gold apex
TTG February 2002



Jungle Flowers
after Henri Roisseau
TTG August 2001



Leopard
raised spots
TTG December 2003



Keiserskroon tulip
gold apex
TTG May 2002



Lily
gold apex
TTG September 2002



Moorcroft style
raised design
TTG May 2004



'Peace on earth'
suede glaze to create sandy
surface
TTG November 2003



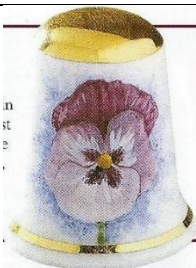
Peacock feathers
TTG April 2004



Poinsettia
gold apex
TTG December 2002



Poppies at Argenteuil
limited to **50**
TTG June 2004



Purple pansy
gold apex
TTG March 2002



Rose
gold apex
TTG June 2002



Snowdrop
gold apex
TTG January 2002



Springtime
TTG April 2001



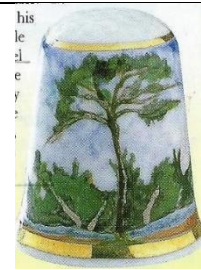
Summertime
TTG September 2000



Sunflower
gold apex
TTG August 2002



Sweetpea
gold apex
TTG July 2002



The Great Pine after Cezanne
TTG October 2001



The Lily Pond
after Monet
date next to signature
TTG July 2001



'Thimble' in Braille
in raised writing
TTG June 2003



Tiger
raised painted stripes
TTG September 2003



Tropical fish
TTG September 2004



Valentine
TTG January 2004



Van Gogh
TTG August 2001



Winter snowflake
white glaze
TTG January 2003



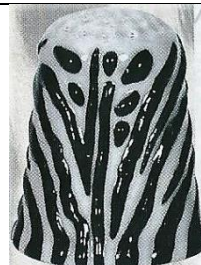
Winter wonderland
raised matt glaze
TTG December 2003



Wintertime
TTG February 2001



Yellow freesia
gold apex
TTG November 2002



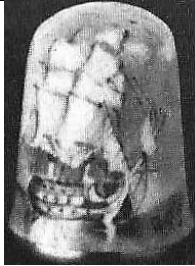
Zebra
raised painted stripes
TTG November 2003

Roger Shufflebotham (R.A.S.)

Shufflebotham was an early painter for Caverswall
he is known as a marine artist
his thimbles are signed R.A.S.



fruit



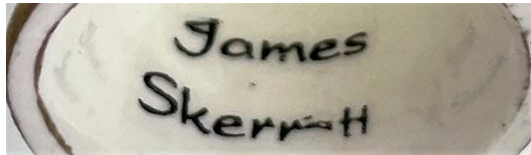
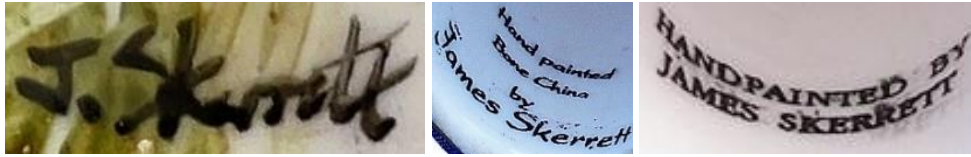
H.M.S Victory
limited to **40**
TTG June 1983
b&w photo



Thames barges
limited to **40**
TTG April 1983
b&w photo

James Skerrett (JS)

Skerrett trained at Royal Worcester
 in 2012 he was the artist-in-residence at the Worcester Porcelain Museum
 James's J Skerrett signature is found on the outside. Earlier thimbles signed JS
 there are several varieties of decal marks inside Skerrett thimbles



Autumn fruits
 TTG September 2012



Christmas roses
 with hedgerow berries
 TTG December 2012



Remembrance poppy
 with cornflowers and marguerites
 TTG October 2012



bird



fruit
signed 'JS'



hedgehog



roses

Ann Taylor

Scotland
signed A Taylor



Brig o' Turk
limited to **99**
TTG July 1992



Chinese male character
limited to **100**
TTG April 1992



Chinese man serenading woman
limited to **100**
TTG April 1992



Choirboy
limited to **245**
TTG November 1992



Dragon
limited to **100**
TTG April 1992



Sewing
limited to **150**
TTG July 1993

Trude Crafts

Penmaenmaer, Wales

I have seen some of her thimbles that are decaled



'Blue tit'
1992



'Chiffchaff'



'Green woodpecker'



'Grey wagtail'



'Robin'



'Siskin'



'Song thrush'



'Conwy Castle Conwy'



Fragonard style in a matching thimble box



Fragonard style

Bryn Weightman

Gwahaniaeth Crafts, Wales

Weightman, wife his wife Doris paints his bone china thimbles mainly as figures – some of his thimbles have caps or hats of polymer clay – they are outside this study signed Bryn



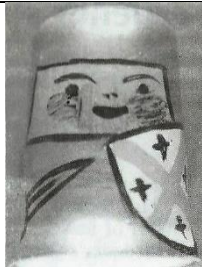
cottage
TTG June 1986



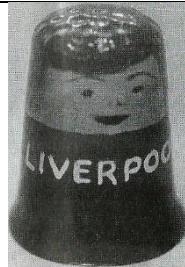
Beaver scout



Friar Tuck
TTG April 1986



Crusader
TTG February 1987
b&w photo



Liverpool
Bryn would add club of your choice
TTG June 1987
b&w photo



gypsy



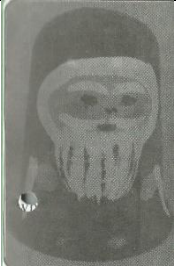
Manchester City



Matrioshke doll
TTG February 1986



sailor



santa
TTG November 1986



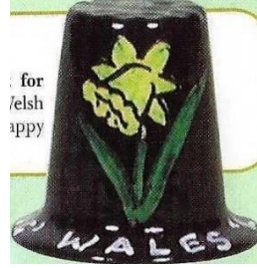
snowman



Venture scout



Welsh guard



'Land of song Wales
TTG February 2003

Sheila Whitcombe

Whitcombe (nee Watson) began painting portraits at 16
she became a modeller for Royal Worcester, so never painted thimbles for them

Sheila paints under the name of Dunheved from Cornwall
signed S Whitcombe on the front of bone china thimbles – sometimes inside, in lower case

Dunheved thimbles are unusually large measuring 30-35cm in height

this gives the artist a larger surface to paint

she needed specialised knowledge of ceramic oxides to paint her historical figures with their jewel colours

the name is lettered on the outside verso

Sheila's painting may creep onto the apex to complete the picture

her artwork is quite pale – the colours here are stronger for clearer pictures

last thimble seen 2005 mail order catalogues



Armada 400th
anniversary 1588-
1988



Charles I
TTG October 1994



cheetah



Chevaliers Gardes Officer 1796



Chopin 1810-49



Cornflowers
with Spring peas
TTG April 2001



Cornish piskey
limited to **84**



Devon



dog



First Fleet
departure 1787
set of twelve painted for
Australia's bicentenary
1988



First Fleet
departure 1787



First Fleet
departure 1787



First Fleet
departure 1787



First Fleet
Tenerife 1787



First Fleet
Rio de Janeiro 1787



First Fleet
Cape of Good Hope 1787



First Fleet
arrival 1788



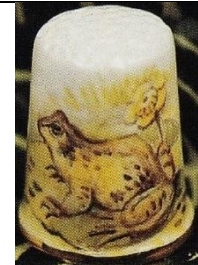
First Fleet
arrival 1788



First Fleet
arrival 1788



First Fleet
arrival 1788



Frog
TTG March 1993



Fruit - berries
TTG May 2005



Goose



Goose



Harebell
with Venus Looking Glass
TTG August 2001



Henry VIII
TTG February 1992



Ladybird
with dog rose



lion



Lorna Doone farm



Padstow



Pansy flower fairy



Polperro



Poppy flower fairy



Queen Elizabeth I
limited to **90**
TTG June 1996



Queen Elizabeth II 1993
TTG May 1993



Queen Mother



Queen Mother



Queen of the Meadow flower fairy



Queen Victoria
limited to **350**
TTG November 1992



Rabbit



Rabbit



Reindeer
Christmas 1988



Richard III
TTG March 1992



Roses



Roses & forget-me-nots
TTG July 2002



Sir Francis Drake



Strawberry flower fairy



Snowdrop flower fairy



terrier



The Cobb Lyme Regis



Thrift flower fairy



Unicorn



Weston Super Mare



Derek Wilson

Wilson is a Royal Worcester trained artist, 1930-1954

he paints under the name of Dunheved from Cornwall, in his studio near Launceston signed D Wilson, often cleverly camouflaged, on the outside of the bone china thimble Dunheved thimbles are unusually large measuring 30-35cm in height ('generously sized')

this gives the artist a larger surface to paint

being a birdwatcher and a wildlife artist, Derek's thimbles are painted around British birds, wildflowers and animals, and some of the Cornish countryside also feature. The latter may have been sold all over Cornwall?

bird name is lettered on inside rim – places on the outside verso

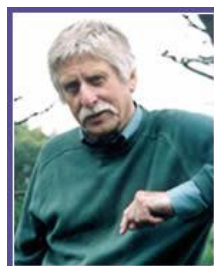
when the number painted is limited, the number is printed on the inside

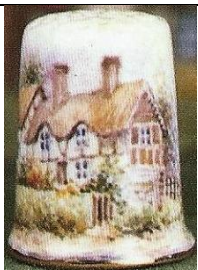
Derek works on two sizes of Dunheved thimbles – the smaller size thimblette is used in the catalogues. These were used more frequently towards the end of his career

last thimble seen thru TTG was July 2011



green Dunheved mark is from late 1970s when smaller sized thimbles were used - not signed





Anne Hathaway's
cottage
limited to **250**
TTG May 1992



Avocet
TTG June 2005



Badger



Badger and robin
limited to **195**
TTG January 1998



Badgers
TTG July 1998



Badgers
TTG June 2009



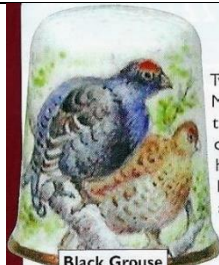
Barn owl
TTG June 2004



Barred owl
TTG July 2004



Bearded tit
TTG May 2005



Black Grouse
TTG October 2005



Black grouse
TTG January 2007



Black redstart



Black tailed godwit



Blackbird
TTG December 2002



Blackbirds
TTG January 2007



Blackbirds



Blackcap
TTG February 2006



Blue tit
TTG December 2002



Blue tit
TTG June 2010



Bluethroats
TTG October 2006



Brambling
TTG September 2003



Bramblings
TTG May 2006



Budgerigars
TTG August 2004



Bullfinch
limited to **150**
TTG June 1994



Bullfinch
limited to **200**
TTG June 1998



Bullfinch
TTG July 2004



bunny



Chaffinch
limited to **125**
TTG September 1999



The
cha
cre
for
yo
ar
st
d
F
I

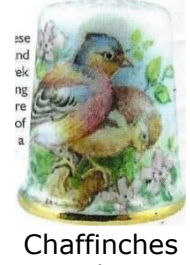
Chaffinch
TTG May 2005



Chaffinch



Chaffinch



se
nd
ak
ng
re
of
a

Chaffinches
TTG July 2007



Cheddar Gorge



studio
hanc
for
chi
Re
£2
E
HA

Chiffchaff
TTG January 2011



Choughs
TTG September 2005



Christmas rose
Christmas 1990



Church with sheep



Curlew



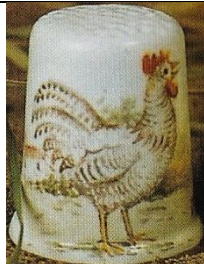
Cockerel and hen
TTG June 2004



Collared (sic) doves
TTG August 2007



Comma butterfly
TTG February 2011



Corky the Cock
limited to **200**
TTG October 1993



Cornish cottage



Cornish Tin Mine –
Levant
1983



Crested tit
TTG March 2005



Curlew
TTG June 2007



Dabchicks
TTG August 2007



Dartford warbler
limited to **200**
TTG August 2000



Devon estuary -
Polperro
limited to **150**
TTG April 1993



Dipper
TTG August 2006



Dormouse
TTG March 2004



Ducks



Eagle owl
TTG September 2002



English cottage
TTG June 1991



Field fare



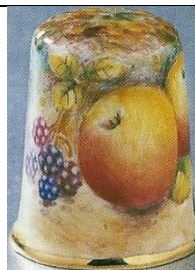
Firecrest
TTG September 2003



Fox and robin
limited to **150**
TTG February 1999



Frenchman's Creek



Fruit
TTG March 2004



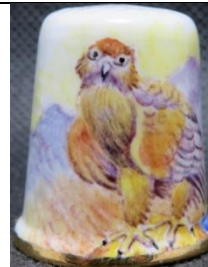
Geese
limited to **150**
TTG November 1997



Gloucester Old Spot pig
TTG April 1995



Goldcrests



Golden eagle
TTG October 2008



Golden Hind



Golden oriole
TTG November 2004



Golden plover
TTG March 2006



Goldfinch
TTG February 2005



Goldfinch
TTG March 2009



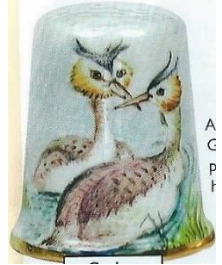
Goldfinch



Goosanders
TTG January 2008



Goose



Great crested grebe
TTG June 2005



Great spotted woodpecker
limited to **100**
TTG December 1995



Great tit
TTG August 2001



Green woodpecker



Greenfinch
TTG April 2004



Greenland falcon
TTG January 2007



Grey seals
TTG April 1998



Grey thrush
TTG July 2002



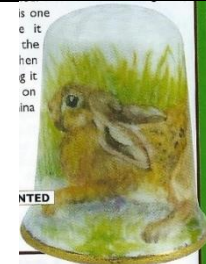
Grey wagtail
TTG April 2006



Grey wagtail



Guy Fawkes
TTG November 1995



Hare
TTG July 2011



Hare and robin
Christmas 1996



Harvest mouse



Hedgehog
limited to **150**
TTG April 1993



Hedgehog
TTG November 1996



Hedgehog and robin



Heron
TTG June 2005



Highland cattle
limited to **150**
TTG February 1996



Hoopoe
TTG April 2005



House
Christmas 1998



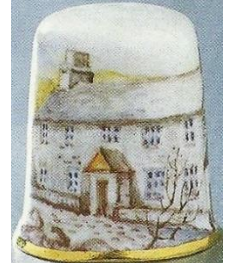
House martin
TTG April 2007



House-sparrows
TTG May 2008



Jack Russell
TTG April 1994



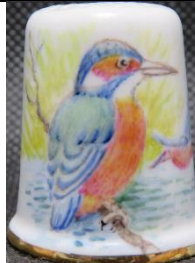
Jamaica Inn
TTG April 2002



Jay
TTG January 2005



Kestrels
TTG November 2007



Kingfisher



Kingfisher
limited to **200**
TTG June 1993



Kittiwakes nesting
TTG July 2005



Knot
TTG June 2008



Lapwing



Lesser spotted
woodpecker



Linnets



Long eared owl



Long tailed tit
TTG February 2009



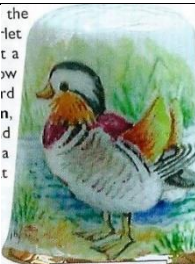
Looe



Lovebirds
TTG June 2006



Mallard



Mandarin ducks



Meadow pipit
TTG September 2010



Meerkats
TTG August 2010



Mevagissey



Mistle thrush
with mistletoe berries



Mole
TTG January 2010



Mousehole
limited to **250**
TTG September 1992



Mousehole
limited to **250**
TTG August 1996



Mute swan
TTG August 2006



Newlyn
limited to **150**
TTG May 1995



Nightingale
TTG April 2006



Nuthatch
TTG August 2002



Nuthatch
TTG September 2004



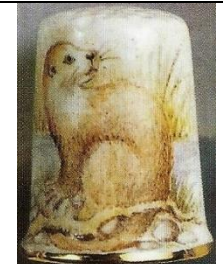
Old Spot



Orchard blackbird
TTG July 2010



Osprey
TTG January 2006



Otter
limited to **125**
TTG May 1993



Otter
TTG February 2003



Otter
TTG November 2009



Over the Bar Bideford
TTG September 1993



Oystercatcher
TTG June 2001

 <p>Partridge & rabbit Christmas 2006</p>	 <p>Partridges Christmas 2006</p>	 <p>Peacock</p>	 <p>Penguin Christmas 1991</p>
 <p>Peregrine falcon TTG October 2004</p>	 <p>Pheasant TTG December 2001</p>	 <p>Pheasant and partridges Christmas 1989</p>	 <p>Pheasant and partridges TTG December 2005</p>
 <p>Pheasants limited to 195 TTG December 1992</p>	 <p>Pheasants TTG December 2007</p>	 <p>Pied flycatchers TTG October 2006</p>	 <p>Pink cockatoo TTG July 2003</p>
 <p>Polar bears Christmas 1992</p>	 <p>Polperro</p>	 <p>Ptarmigan TTG October 2005</p>	 <p>Puffin TTG February 1994</p>
 <p>Puffin TTG October 2003</p>	 <p>Quail TTG October 2006</p>	 <p>R.M.S Titanic sank 2.20am April 15 1912</p>	 <p>Red fox TTG October 1994</p>
 <p>Red grouse limited to 175 TTG August 1993</p>	 <p>Red grouse TTG July 2006</p>	 <p>Red squirrel TTG July 2009</p>	 <p>Red starts</p>

 <p>Redwing TTG February 1994</p>	 <p>Redwings TTG February 1994</p>	 <p>Redwings TTG February 2008</p>	 <p>Reed buntings TTG April 2008</p>
 <p>Ringed plovers TTG January 2008</p>	 <p>Robin 1986</p>	 <p>Robin Christmas 1987</p>	 <p>Robin TTG November 1995</p>
 <p>Robin TTG November 1997</p>	 <p>Robin TTG November 2000</p>	 <p>Robin TTG January 2003</p>	 <p>Robin TTG January 2005</p>
 <p>Robin TTG November 2005</p>	 <p>Robin TTG November 2006</p>	 <p>Robin Christmas 2007</p>	 <p>Robin TTG December 2007</p>
 <p>Robin with house</p>	 <p>Robin with blue tit</p>	 <p>Robins TTG November 2005</p>	 <p>robins</p>
 <p>Rose-coloured starlings TTG April 2007</p>	 <p>Rock-pipit TTG September 2006</p>	 <p>Ruby throated hummingbird TTG May 2003</p>	 <p>Ruff TTG September 2007</p>

 <p>Sanderling TTG June 2008</p>	 <p>Sand-martins TTG May 2008</p>	 <p>Scops owl TTG June 2003</p>	 <p>Sheep limited to 145 TTG September 1996</p>
 <p>Shepherds Christmas 2000</p>	 <p>Shore-lark TTG September 2007</p>	 <p>Sidmouth</p>	 <p>Skylark TTG May 2007</p>
 <p>Snipe TTG April 2008</p>	 <p>Snow bunting TTG January 2001</p>	 <p>Snow goose TTG November 2003</p>	 <p>Snowman</p>
 <p>Snowman Christmas 1990</p>	 <p>Snowman Christmas 1997</p>	 <p>Snowman TTG November 2000</p>	 <p>Snowman tobogganning TTG November 1994</p>
 <p>Snowy owl TTG November 2003</p>	 <p>Snowy owl</p>	 <p>Somerset cottage</p>	 <p>Song thrush TTG May 1994</p>
 <p>Song thrush Christmas 2006</p>	 <p>Sparrowhawk</p>	 <p>Spotted crake TTG October 2007</p>	 <p>Squirrel TTG November 2001</p>



St Michael's Mount
TTG February 1993



Stonechat



Suffolk sheep
limited to **150**
TTG March 1995



Swallows
TTG March 2004



Swallows



Tawny owl
TTG December 2008



Tawny owl
TTG March 2002



Teal
limited to **150**
TTG January 1997



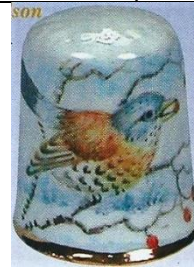
Teddy bear



Thatched cottage
TTG August 2009



Thomas Hardy's cottage



Thrush
TTG January 2004



Tintagel Castle
limited to **250**
TTG August 1996



Tomago House N.S.W.



Tree creeper
TTG September 2004



Tree creeper
TTG October 2007



Turkey
Christmas 1994



Turnstone
TTG May 2007



Turtle dove
TTG September 2006



TWITE

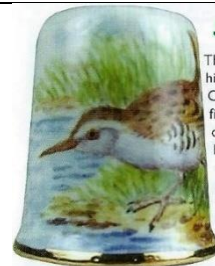
Twite
TTG January 2009



Valley of Rocks Lynton
limited to **83**



Venice



Water-rail
TTG June 2007



Water shrew



Waxwing
TTG April 2003



Wells Cathedral



Wheat ear
TTG February
2006



Whinchat
TTG February 2007



White stork
TTG June 2006



Whitethroat
TTG March 2005



Willow tits
TTG November 2007



Willow warbler



Windsor Castle
limited to **350**
TTG December 1992



Winter
TTG December 1996



Winter partridges
TTG October 2002



Witch
limited to **150**
October 1995



Woodcock
TTG August 2005



Wood-lark
TTG December 2005



Woodlark
TTG March 2007



Wren
TTG July 1997



Wren
TTG January 2003



Wren
TTG May 2005
/February 2008



Wren
TTG March 2007



Yellow wagtail
TTG September 2008



Yellow hammer
TTG April 2003



Yellowhammer
TTG February 2005

Georgina Winkley (GMW) Wales



1997



1997



1997



1997



Anne Young

Young's barge or canal ware painting is uniquely British she certainly mastered this folk art form in the miniature size required to paint on thimbles most of her thimbles are signed and some are dated – they range from 1980s-1990s Anne's thimbles are signed on the inner rim Anne Young – lettered upside down dates when included are also inside there are traditional background colours and the lovely gloss adds to their appeal it's the trim around the rim where one sees the details the main design is replicated on the verso Young also paints wooden thimbles



L: 1998 – her book – sticky label





green



green
distinctive yellow rim



red
1998



red



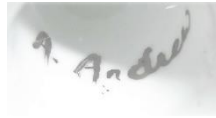
red



white

Other painters - named

A Andrew

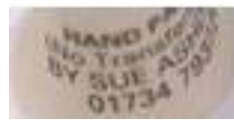
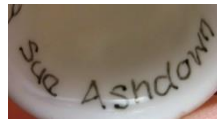


Poinsettia

Sue Ashdown

Reading

'handpainted - no transfers or decals used'



'Welsh Thimblers
limited to **30**

TTG September 1990'

Daffodils with their thimble emblem on verso



daffodils

Lorraine Bates

born 1964

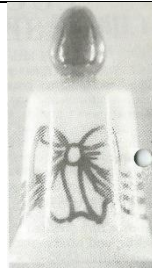
graduate of Bath Academy of Art 1986

daughter of Gill and David Bates of Woodsetton Peeps

set up her own pottery, Woodsetton Arts Pottery, alongside that of the family business
handpaints some of their enamelled brass thimbles



'for Mum'
TTG February 1986
b&w photo



Easter 87
TTG April 1987
b&w photo



'Get well soon'
TTG May 1986
b&w photo



Teddy
TTG September 1986
b&w photo

M Bates

painter for Caverswall



blackberries
circa 1977

Monica Bowron (MB)



Highland landscape
limited to **150**
TTG October 1985
b&w photo

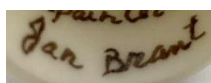


Stonehenge
TTG May 1986



Wiltshire Downs
limited to **150**
TTG September 1986
R: original catalogue entry

Jan Brant



Blue tit

Don Cameron (DC)

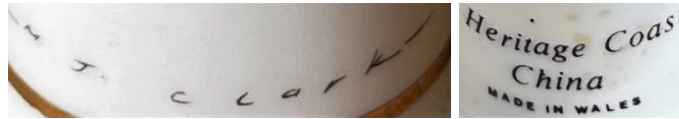


agateware
TTG April 1977

M J Clarke

Wales

Georgina painted for Heritage Coast China. Signature is on the outside



owls

D J Coggan



'The Queens 60th birthday 21 April 1986'
commissioned by TSL
limited to **800**



'A S (Andrew and Sarah) married 23 July 1986'
commissioned by TSL
bee is Sarah's emblem
limited edition



'Ruby wedding of H.M. Queen Elizabeth II & Philip, Duke of Edinburgh 20 Nov.1947-1987'
gold apex

Harry Colclough

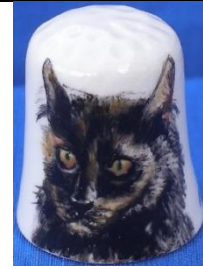
worked for Royal Grafton for 30 years



cat



Horse and cart
TTG June 1985
b&w photo



'Tuppence'



'The Orchards? (1950)
backstamp is Healcraft Fine Bone China

Joan Dahl



Anne Dalton

Ottervale China Company Devon
Anne also painted character head thimbles



Deirdre
Guernsey



Goldfinch



Linnets

V Fawcett
Ilkley



flowers

D Fuller



Wren

Shelly Gardner



Unicorn

Irene Glendining



Wren

Patsie Griggs



Chick



Flowers

J Humphries



Leslie Lamb

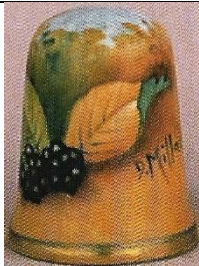
Ross-shire Scotland



Goldfinch
TTG July 1984



D Miller (DM)
painter for Caverswall
some thimbles have the full signature, others the initials



fruit c.1985



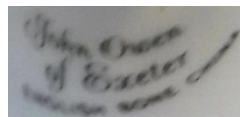
dragon

Clare Montgomery (CM)
Ballymena Northern Ireland



Wildflowers of Ireland

John Owen of Exeter



Devon W.I.
1920-1995
violets

Penny

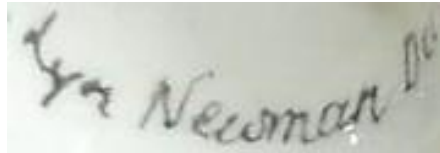


Rachel Munday



Kingfisher
limited to **245**
TTG September 1999

Lyn Newman



Dorothy Newsome



'DTS 2nd International Conference 7.8.9 June 1991'

Dorset Thimble Society

their 3rd Conference thimble was made by Birchcroft probably with the design by Newsome limited edition



'DTS 1985 - 2005'
limited edition



A F Pinxt



'Embroiderers' Guild 1906-1981'

limited to **100**

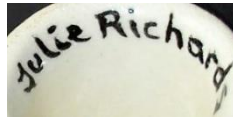


'Margate'
1982

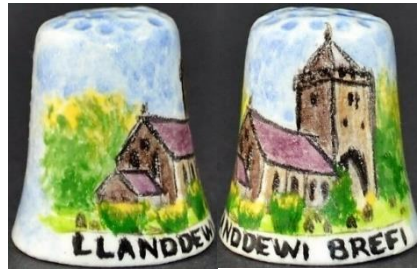
TSL spring 1983
b&w phptp

Julie Richards

Wales



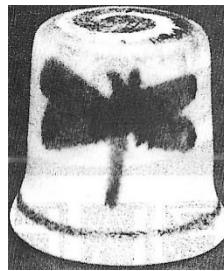
lettered upside-down



'Llanddewi Brefi'

Susan Senior

Scottish potter



white porcelain cobalt blue butterfly

TTG June 1994

b&w photo

Sylvia Smith



Latticed flowers – mauve

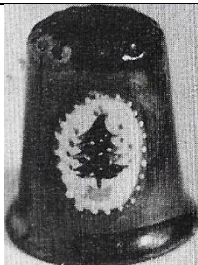
TTG November 1990



Latticed flowers – turquoise

TTG November 1990

Sheila Southwell



Christmas tree
on pine green lustreware

limited to **100**

TTG November 1984

b&w photo



Rose
on blue lustreware

limited to **50**

TTG August 1983

Steffie



watchtower

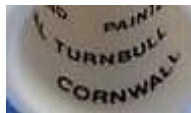
E Trillsam



chickens

Val Turnbull

Cornwall



fuchsias

Susan Ware



snowman
1986

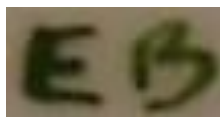
Other painters – initials only
(arranged in order by last initial)

NA



pottery

EB



'C'

E M B



signed on outside



blue tit
inscribed 'Anne'

HSB



harebells - heath

CC



Alice In Wonderland
Heirloom Editions

S.C.F.



metal affixed

EH



signed on outside



poppies

JH



'Mount Stuart House and Gardens'

EJ

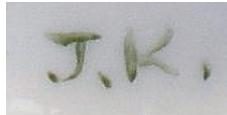


poppies

NJ



JK



signed on outside



harebells

MgM



signed both on in- or outside – R impressed inside



swans



violet affixed

RMCK



Harebells



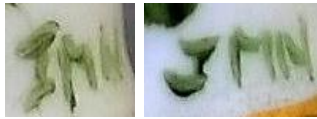
Snowdrops

RSM



violets
1984

JMN



signed on outside



pansy



primrose



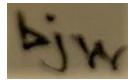
rose



RS



bjw



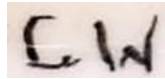
hedgehogs

CTW



ladybirds

CW



'Seacombe Pottery 1852-1864'

PW



References

- Charlotte Goldberg *David Roy Bowkett former Royal Worcester artist 1948-1962*. [TCI Bulletin](#) summer 2014
Susan Gowan *Handpainted thimbles* (Peter Carver) [NTSCA Newsletter](#) February 2014
Friedy Kamp *Vingerhoed Nieuws catalogues* 1993-2008
Coilin Millett *The wonder of Worcester: an illustrated history*. 2020
The Thimble Guild (TTG) *catalogues* 1983-2005
Thimble Society of London (TSL) *catalogues* 1981-2013
Bertus van den Dikkenberg *Het Vingerhoedje*. 1998

Contributors

Wendi Aguiar | Sally Bailey | Joanna Blackie-Sew Many Bits | Yolanta Bogdziewicz | Pawel Brzyski | Joy Carlsen Earles
Charlotte Goldberg | Andrea Griffiths | Linda Heggs | Lynda Herrod | Doreen Lilley-Pricklepin | Simon Lloyd-Edwards
Carolyn Meacham-Elegant Arts | Amanda Nevin | Maurice O'Reilly | Diane Poesk | Sue Roberts | Mabel Rogers
Jean Rose-Miss Mouse | Linda Samaripa | Mer Saucedo | Wolf-Dieter Scholz | Jean Taylor | Bertus van Dikkenberg
Michael Wheeler | Melissa Yauk | Krystyna Zagajewska

This listing of Modern British handpainted china thimbles does not purport to be complete or accurate in all aspects.
Rather it invites comment and contribution to add to our knowledge. My thanks to the contributors.

EMAIL thimbleselect@bigpond.com TO SHARE YOUR KNOWLEDGE

© **Sue Gowan**
February 2022