

# Modern British handpainted china thimbles

1978-2022

At the start of the modern thimble collecting era of the late 1970s, some of Great Britain's china houses produced handpainted thimbles. This was a time consuming and costly exercise. The demand avalanche for instant and cheaper thimbles swamped thimble manufacturers as we entered 1980.

The porcelain houses realised that creating their own decals or transfers using a skilled artist would speed up production and an unlimited number could be churned out.

Initially, companies like Caverswall had their artists hand-touch their designs with spots of paint and you will find artists' names like William Tipton, John Ball, C Nunn, Holmes Gray or Mary Grant named on the thimbles. These are not handpainted thimbles: just hand-touched.

Sutherland, who produced china thimbles the longest, made thimbles in the same way – but didn't even follow the hand-touched route. Some of their thimbles are labelled hand enamelled. Rather a few spots of enamel enhances the design – this is known as champeve. JB, ME and PH (Pauline Haughton) are initials found on Sutherland thimbles enhanced in this manner.

Royal Worcester, the doyenne of handpainted thimbles from the 1870s, faced the same problem. They did not want to employ more artists and thimbles are time-consuming to paint freehand with at least three firings. In the 1970s, the foreman of the painters' division, Edward Townsend, came up with a solution. He designed a number of outline prints - which were printed onto the blank thimbles. The artists did not have to create an individual painting but merely coloured in the blank design. This speeded up the process noticeably. Even that didn't help as by 1986, the last handpainted RW thimble was painted. They turned to decal thimbles to keep up with demand.

The pendulum did begin to swing back in the 1990s and handpainted thimbles came back into their own in the small numbers as before.

The artists had access to blank thimbles from any source. This would give them creative freedom and some commercial success.

Handpainted thimbles take a while to paint, so they are created in a limited supply.

Many of the artists didn't only paint thimbles – they formed a minute part of their output. They painted vases, plates, brooches, lidded jars, figurines of fauna, paintings, coffee pots, miniatures and handpainted enamel boxes etc.

A few of these artists have painted on wood, glass and silver thimbles and on enamel. They are outside the scope of this topic. Thimbles with handpainted flowers affixed will also not feature here.

[See my topics on specific British painters of china thimbles:](#)

Graham Payne (1981) who employed at least six freelance painters  
Gerald Delaney

Jasper's of Yorkshire (Margaret and Mandy Palmer)

Francesca employed at least 16 thimble artists and other character head thimbles makers number 20  
Royal Worcester thimble painters

I have featured **32** British thimble handpainters.

When I have fewer than five thimble examples from specific painters – they will follow at the end of the section of thimbles - both in alphabetical order by painter's surname.

If the thimble only has the painter's initials, they follow on from this section.

Lastly is a very small section where the handpainted thimble is obviously British from the topic or the shape.

Along the way I have learnt heaps – and I can now recognise thimbles painted by these artists.

It takes sheer talent to paint accurately on such a small area of china.

I hope you will enjoy the journey as much as I have.

For other handpainted thimble topics see

Australian handpainted thimbles  
Francesca and other character head thimbles  
Gerald Delaney handpainted thimbles  
Graham Payne handpainted thimbles  
Jasper's of Yorkshire handpainted thimbles  
Royal Worcester thimble painters

### Anne Blades

Blades was born in Port Talbot in 1953, grew up in Guildford and returned to live in Wales in 1968 she studied industrial ceramics and china painting became her passion in 1984 opened her ceramics studio – Anne Blades Ceramics  
Anne opened her own shop and gallery, Blades – The Artworks in 1997 in Mumbles (Mwmbwls), Swansea in Wales  
her thimbles are distinctive in that they have a daffodil design pressed into the apex  
AB with a date letter is her maker's mark on the inside  
source: <https://www.anneblades.co.uk/about/>



Caswell Bay



Caswell Bay



holly



Ich Dien



Mumbles Lighthouse



Mumbles Train  
unsigned



Three Cliffs Gower



Worms Head

### David Bowkett

Bowkett was a Royal Worcester trained artist and worked there between 1948-1962

he moved to Cornwall and bought a pub in the 1970s

David opened his own studio in Devon

he began to paint thimbles in 2002

this is where his RW training came to the fore – using birds and fruit themes painted on bone china

these included the signature on the outside and the traditional sprig on the verso

thimbles have the David Bowkett backstamp and his signature is D Bowkett

Bowkett died in 2009

if there is a small china hook on the back of the item – it is a tiny candelisnuffer – they can be mistaken for thimbles. His figurals have indentations on the head



candelisnuffer



R: his mark for character-shaped thimbles







bird - Kingfisher



choirboy - i



choirboy - ii



cricketer

tho character-shaped, this is not a candlesnuffer  
backstamp is slightly different for the character-shaped thimbles  
fine bone china



golfer







### Gigi Branch

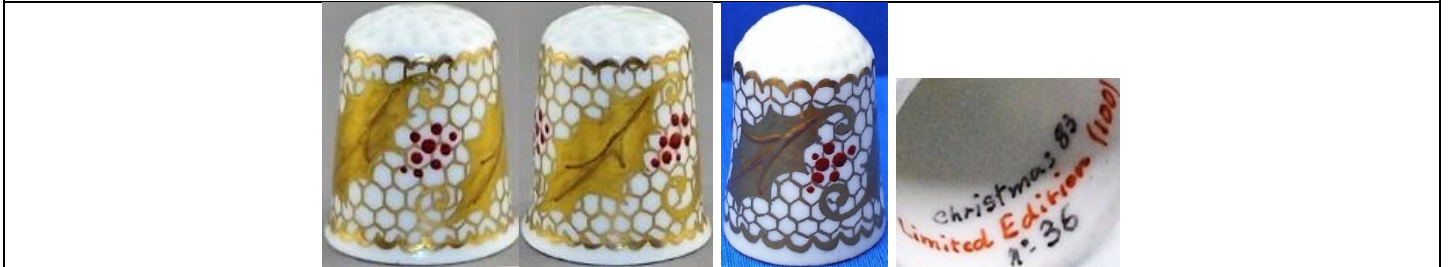
Gigi trained at Limoges in France then settled in Devon  
her thimbles only painted in 1983-1984

thimbles signed inside Gigi

see also topic Glass and crystal thimbles for her painting on glass thimbles



Christmas 1983  
carollers



Christmas 1983  
holly leaves  
red enamelling on lace-like ground  
dated and numbered  
limited to **100**



Forget me nots  
May 1983  
b&w photo



Prince William 1<sup>st</sup> birthday  
21.6.83  
royal symbols painted all round

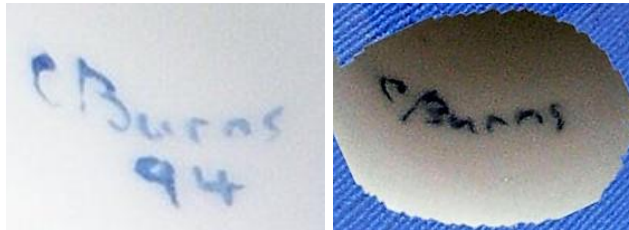


stylised flowers  
limited to **150**  
August 1984

## Christopher Burns

Chris Burns is a Royal Worcester trained artist  
 in 1987 when RW were no longer producing handpainted thimbles, Burns opened his own studio in the  
 Malvern Hills, Worcestershire  
 here he established Harcourt China  
 before the use of this mark, the thimbles were marked Malvern England  
 he provided thimbles to The Thimble Guild (1987-1994, and again in 2005). I have used the catalogue  
 dates

his thimbles are not dated (with one exception in **1994**)  
 there is a lovely range of designs capturing the surrounding English countryside. His thimbles evolved to  
 sculpt thimbles in relief giving a three dimensional aspect  
 thimbles have the Harcourt China backstamp and his signature C Burns is located on the inside  
 thimbles are not named – I have used names from the TTG catalogues etc



L: early blue Malvern mark (Type 1) - C: no brand name Handpainted in England (Type 2)

 A stroll thru the woods limited to <b>200</b> TTG June 1993	 Autumn fruits TTG November 1990	 Barn Owl TTG August 2005	 bee TTG June 1993
 bird of prey pink ground	 bird of prey pink ground	 Blue tit TTG January 1988	





British garden birds  
Blue tit  
TTG October 1987  
(set of twelve)



British garden birds  
Bullfinch  
TTG October 1987



British garden birds  
Firecrest  
TTG October 1987



British garden birds  
Goldfinch  
TTG October 1987



British garden birds  
Robin  
TTG October 1987



British garden birds  
Sparrow  
TTG October 1987



British garden birds  
Thrush  
TTG October 1987



British garden birds  
Wren  
TTG October 1987



British garden birds  
TTG October 1987



Christmas 1991  
TTG December 1991



comet Hale-Bopp



Cottage  
TTG October 1998



Cottage  
TTG October 1998



Cottage  
TTG October 1998

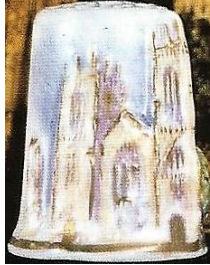




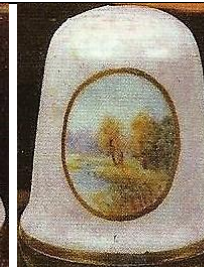
Cottage  
TTG October 1998



English cathedral  
TTG December 1993



English cathedral  
limited to **450**  
TTG April 1992



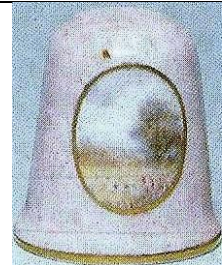
English countryside  
set of six on pink ground with cameo scenes  
TTG July 1989 - TSL summer 1989



English countryside  
blue ground with cameo scene  
with tree  
TSL summer 1989



English countryside  
blue ground with cameo scene



English countryside  
pink ground with cameo scene  
TSL summer 1989



English countryside  
pink ground with cameo scene  
Type 2 backstamp



Holly  
pink ground with champeved holly  
Thimble Society of London winter 1989  
limited to **450**  
TTG December 1992



Kingfisher with fish  
L: type 1 mark



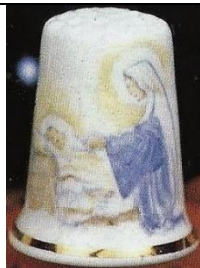
Kingfisher  
limited to **200**  
TTG June 1988



Ladybird  
thimbles have the 1994 dated signature  
TTG July 1994



Little owl  
limited to **200**  
TTG August 1999



Madonna  
TTG December 1991



Malvern Hills  
1993  
panorama scene all round  
limited to **375**



Mercat Cross  
(street in Wyre Evesham)  
limited to **250**  
TTG February 1993



Mr and Mrs Owl  
TTG July 1992





Peregrine  
TTG February 1990



pig  
TSL summer 1991



Postbox at Crothorne  
(in Evesham)  
limited to **375**  
1993



robin



robin  
pink ground with cameo



Rose cottage  
TTG January 1992



Salmon  
pink ground  
limited to **250**  
TTG December 1991



Shepherd's cottage  
TTG January 1992



Snowy Owl  
TTG August 2005



St Paul's Cathedral  
limited to **375**  
TTG November 1992  
TSL spring 1993



Summer Serenity  
TTG June 1990



Thatched cottage  
TTG January 1992



The lone shepherd  
September 1992



Village church  
limited to **250**  
September 1991



Wren





Windmill  
TTG March 1989  
TSL autumn 1990



woman shopping

## Peter Carver

I first came into contact with Peter Carver from Solihull in West Midlands in 2013 thru a Canadian thimble collector

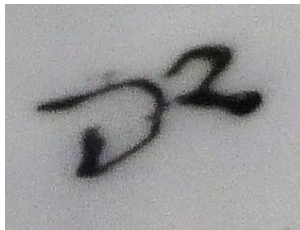
she encouraged Peter to try painting thimbles

Carver's specialty is painting birds – see for yourself his quirky, almost humorous style on his retirement, with interests in professional watercolour painting, furniture restoration and painting enamel boxes amongst many others, with typography and graphic design in his working life, he accepted the challenge

having a kiln, Peter was able to make his own china thimbles – he gilded some of his apexes and these are distinctive as the gold only covers the immediate indentations

he experimented with poly clay, which enabled him to try sculpted thimbles

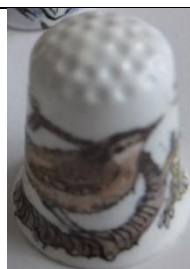
Carver's thimbles are signed PC (but look like DR): you can see for yourself with three examples the thimble names are those of the painter but not lettered within thimble (2013-2014) but thimbles are not dated



Peter also painted on enamel



Badger



bird



Blue tit  
cutaway to reveal nest  
inside



Book at bedtime  
gold painted apex



Christmas 2013



Christmas 2013



Christmas 2013  
'Deck the halls with  
boughs of holly'



Christmas 2013



Christmas robin



Cockerel Moon



Corgis – Monte & Ozzie  
painted on commission



dolphin



Fox



Hare



Iron Bridge



Leaves and berries



Leaves and berries



London Bridge



Otter/beaver





Owl



Packwood House



Pheasant



Pheasant



poly clay set of six



Rabbits



Robin



Star Dust



Three rabbits



Tower Bridge



William Morris



William Morris



William Morris



William Morris



William Morris



Wren





## Nigel Creed - Ken Russell

Creed is a Master Painter and worked at Royal Worcester in 1963

Russell (1934-2010) was Royal Worcester's last Master Gilder

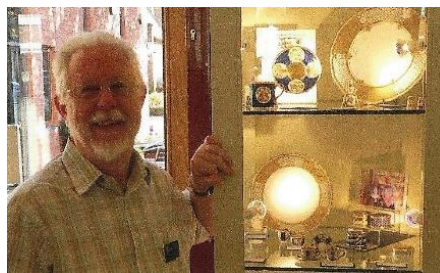
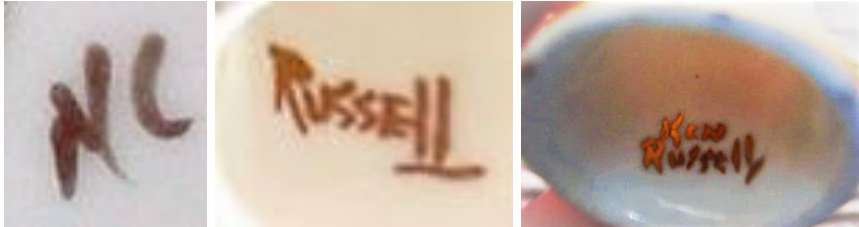
Thimble Society of London commissioned Nigel and Ken to produce handpainted thimbles for sale thru their thimble catalogues (1987-1999)

Nigel signed his thimbles with his initials NC on the outside near the painted part

Ken was the gilder and used 24ct gold. Sometimes the apex is gilded. Russell is signed inside

Ken had retired by 2004. He gilded thimbles for other thimble painters

names used are purely descriptive, not being named by the painters – thimbles are not dated  
Royal Worcester collectors will recognise many of these designs as those that came from the factory, given a modern look



Ken Russell 2010



Creed also painted on enamel





Blue tit  
limited to **50**



butterfly



butterfly  
TSL winter 1992



butterfly



Cactus wren  
TSL winter 1993



Cherokee rose  
TSL spring 1994



Christmas  
TSL autumn 1990



Chrysanthemum  
TSL autumn 1990



Cockerel  
TSL summer 1991





Crocus  
TSL summer 1991



Daffodil  
limited to 50



freesias?



Gold flower  
TSL summer 1999



Gold



Gold



Gold  
signed Ken Russell



Gold jewels swags  
shell pink ground  
TSL autumn 1996



Goldcrest  
TSL spring 1993



Goldfinch  
L: TSL autumn 1990



Imari  
TSL autumn 1989



jewelled  
TSL spring 1996



jewelled  
in panels



jewelled  
TSL summer 1996



jewelled



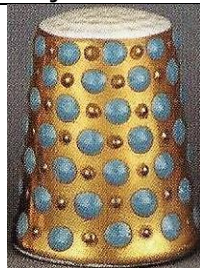
jewelled



jewelled



jewelled



jewelled  
TSL winter 1989



jewelled



jewelled



jewelled



Jewels with coral  
TSL autumn 1989



Kingfisher  
TSL spring 1990



Larch spray  
TSL winter 1994





Lattice



Lattice gold  
black & white panels  
TSL summer 1996



Lattice gold on white  
TSL summer 1999



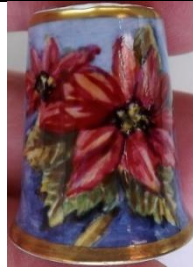
Owl  
TSL autumn 1995



Peacock butterfly  
limited to **100**  
TSL summer 1992



Pheasant  
TSL autumn 1991



Poinsettia  
TSL autumn 1991



primrose



Ptarmigan  
TSL winter 1991



purple flower



Robin  
limited to **50**  
TSL winter 1989



Rose  
TSL spring 1990





Rose  
TSL winter 1991



Ruby jewelled  
limited to **100**  
with TSL mark for Thimble Society of London  
TSL summer 1987



Snowdrop  
limited to **50**  
TSL winter 1989



Thistle  
limited to **100**  
TSL summer 1992



Tulip  
TSL spring 1992



Turquoise jewelled  
limited to **100**  
TSL summer 1987



Turquoise jewelled  
TSL summer 1999



Turquoise jewelling  
TSL winter 1989



Turquoise jewels  
TSL autumn 1996





Wild lupin  
TSL spring 1994



Woodcock  
TSL spring 1992



Wren  
TSL autumn 1990



yellow flower



yellow flower  
TSL spring 1992  
rhododendron?



## Janice Daughters

Daughters is an artist in Leyburn, Wensleydale North Yorkshire trained in graphic design, Janice moved from London to set up her studio in 1986, where she was able to freelance in graphic design

she had developed a love for the countryside, with its flora and fauna as an added interest, she began to paint on porcelain and china, including thimbles her signature details are on the inside rim and the date is included (1991-1997)



apples



cottage



Duckling  
1991



Duckling  
1992



Duckling  
1997



Flower garden  
1992



Harvest mouse



Poppies





Sheep in Dales  
1991



Sheep in Dales

### Robert Earwicker

China Cottage, Cornwall  
his characters are made of Cornish clay – quirky



Monk friar



nurse



pirate



scarecrow



Teddy bear

### Raymond Everill

Everill works out of Lime House Studio in Staffordshire, since he retired from Spode  
his trade mark is Raymond Everill & Sons England  
you can't mistake his bright pink signature R.Everill  
thimbles are not named – some are dated (1988-1989)  
the apex is painted with 22ct gold



bird  
1989



blackberry  
1988



Bullfinch  
1988



cherry



Goldfinch



grapes with cherries  
1989



grapes



plum

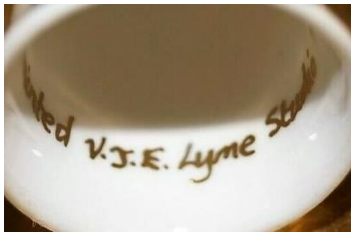


Summer meadow  
1989



## Vivienne J Evison

Evison runs Lyme Studio in Cheshire with her husband Paul (she was first identified by TTG as Christine)  
 her thimbles are of fine bone china finished in 22-24ct gold  
 many of her thimbles are painted using precious metals – no two are ever the same  
 signed Vivienne J Everill or V.J.E (1992-1997)



After Lowry  
TTG June 1996



Earl's golden coronet  
TTG September 1995



Lightning  
TTG December 1996



Peacock feather

set in precious metals lustre  
 showing 6 of 7  
 TTG December 1992



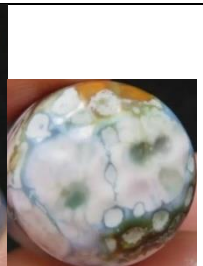
'Amber'



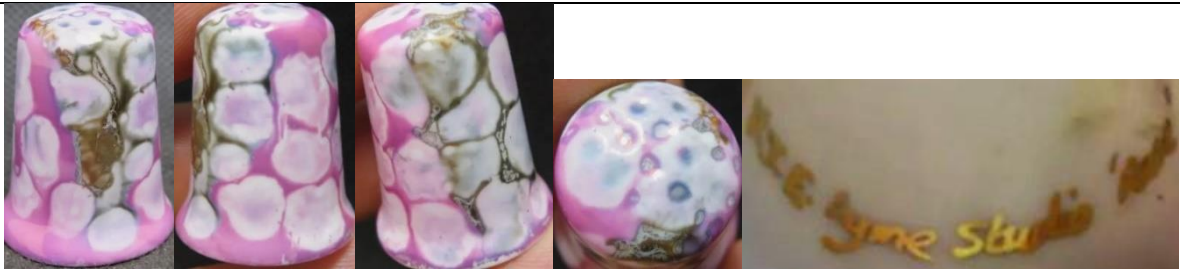
'Garnet'



Malachite



Petrol



'Rose'



'Ruby'



Weights  
1/2 lb Mushrooms ...  
 TTG October 1995



Weights  
1/4 lb Tea 125grams (0.275)  
 TTG October 1995



Weights  
1 lb Tomatoes 1/2 kilo (1.1...)  
 TTG October 1995



Weights  
1 oz chillies ...  
 TTG October 1995



Weights  
5 lbs Potatoes ...  
 TTG October 1995



gold painted apex



## Helen Halloran

Halloran worked for Royal Worcester, Halcyon Days and Elliot Hall Enamels  
her bone china thimbles are one-off pieces  
apexes are painted with 24ct gold  
these six flower thimbles are from 2022  
not signed



Campion



Celandine



Cherry blossom



Primrose



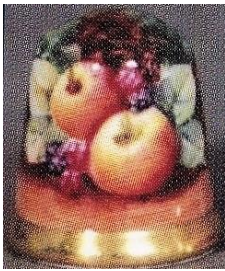
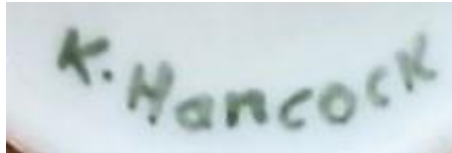
Speedwell



Violets

## Keith Hancock

Hancock worked for Sutherland in Stoke-on-Trent and Caverswall, handpainting thimbles for their brand these are not decaled as the bulk of the Sutherland and Caverswall thimbles were they are all signed – and numbered inside when they are limited in number The Thimble Guild commissioned two sets of thimbles from Hancock in 1983 signature is K.Hancock or Keith Hancock. The black signature is signed inside



apples  
also available with Swarovski crystal apex



apples  
Caverswall



Autumn vale (Four seasons)  
limited to **200**  
TTG September 1983



Autumn – reaping  
1983





blackberries  
Caverswall



blue tit  
Swarovski crystal in apex



daisies  
Swarovski crystal in apex



flowers  
green Swarovski crystal in apex



flowers



Robin  
red Swarovski crystal in apex



Romany art  
TTG summer 1983  
b&w photo



Romany art  
green with handpainted enamel  
limited to **200**  
TTG September 1983



Romany art  
maroon with handpainted enamel  
limited to **200**  
TTG March 1983



Romany art  
pink with handpainted enamel  
limited to **200**  
TTG May 1983



Romany art  
blue with handpainted enamel  
limited to **200**  
TTG July 1983



Spring vale (Four seasons)  
limited to **200**  
TTG April 1983



Summer vale (Four seasons)  
limited to **200**  
TTG July 1983



The red dragon  
more gilding than the TCC Red dragon  
issue  
limited to **1000**  
TTG December 1983



Winter vale (Four seasons)  
limited to **200**  
TTG February 1983



Meissen style – cobalt ground with two different  
cameo scenes



Meissen style – terracotta ground with two  
different cameo scenes



# Agneta Hickley

Rimpton Yeovil

her thimbles all have a scalloped gold-painted rim  
Hickley's thimbles have painting all round – except her bird thimbles



Blue butterflies  
1988



Country cottage  
1988



Goldfinch



Hedgehogs  
1988



Kingfisher  
1988



Kingfisher  
1992



Pink flowers  
1988



Red butterflies  
1989



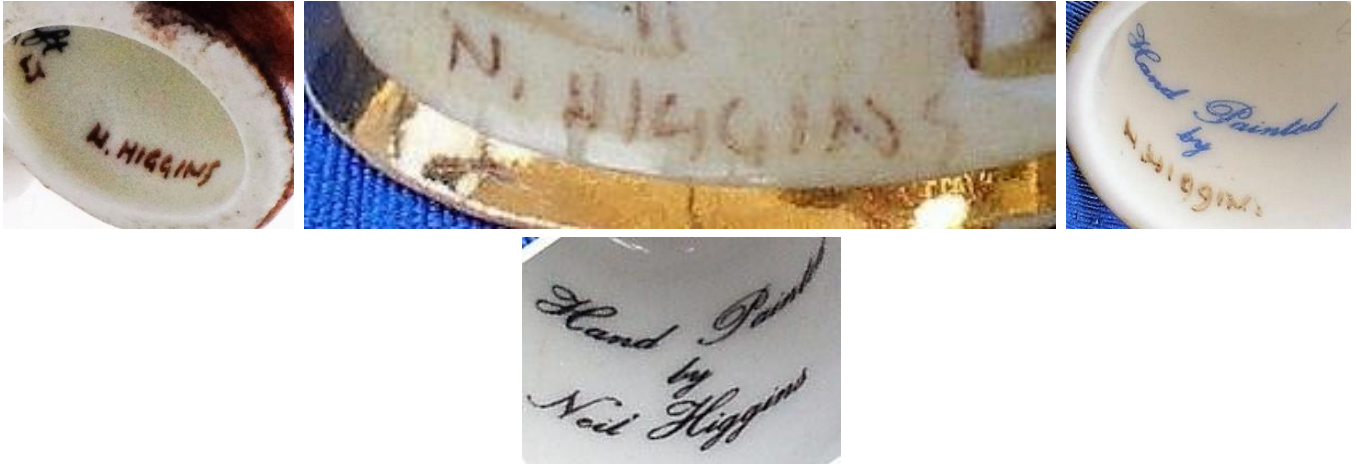
Robin  
1989

## Neil Higgins

Higgins first came to my attention as the handpainter of the Robin Hood set of six character head thimbles, with the brand name of Healacraft, using the initials of NH inside the thimbles his name has also been associated with Sutherland. I speculate that's where he learnt his skills as a handpainter of thimbles?

Neil's signature of N.Higgins is always lettered in brown in his thimbles and may be found lettered on either the inside or outside

thimbles are not dated - earliest date I have found is 1983 (mail order thimble catalogues). He painted thimbles for a short period 1983-1985, Higgins often uses a blue wash as the ground for his painting Higgins undertook commissions thru The Thimble Guild - including a few of pets he subsequently painted for Staffordshire Enamels (1995)



 <p>'1903 Georges Richard' ltd to <b>10</b> TTG July 1983</p>	 <p>'Alpha Romeo BC - 2300'</p>
 <p>bird</p>	 <p>bird</p>
<p>his birds are not named so for an Australian unfamiliar with British birds ... they are named bird</p>	
 <p>bird</p>	 <p>bird</p>





bird



Blue tit



'Bridge House Ambleside'



'Bronte House'  
TTG September 1984



building (name illegible)



butterfly



'Carillion Loughborough'



'Chichester'  
(Yarn Market)



choristers  
with attached pendant loop  
limited to **250**  
TTG November 1983  
b&w photo



cottage





'Derby Cathedral'



'Gloucester Old Spot'



King Charles spaniel



Kingfisher



Labrador



Lapwing



'Pershore'  
pink wash



'Portland ram'



'Rippon Cathedral'



'Shakespeare's birthplace'



Snowman  
with attached pendant loop  
limited to **250**  
TTG November 1983  
b&w photo



snowman





Springer spaniel  
TTG March 1985



'The Bell Tower'  
The Thimble Guild commissioned this thimble of the building where their thimble business was housed  
TTG June 1983



'The Orchards'



'Thimble Hall'



'Wells'

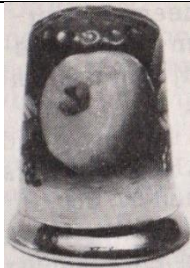


'Womborne Church'

### Bruce Higham (BH)

Higham is a ex-Coalport and Staffordshire Enamels (1995) painter  
Worcester-based

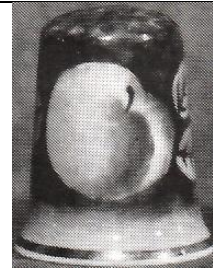
heavily painted gold apices and thick gold painted rims  
some seem to have pale lettering on the cream ground



apple  
1988  
pale green apple on green ground  
b&w photo



apple



apple  
1989  
b&w photo



blossom



cherry



dragonfly



pear

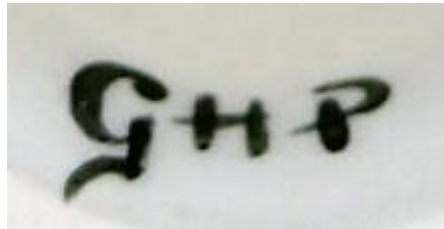
### Griselda Hill

Wemyss Ware was founded in 1882 in Fife Scotland. It took its name from a nearby Castle in the 1920s the studio moved to Devon – it closed in 1957

in 1985 Griselda revived the Wemyss Ware® style handpainting to their style at her The Griselda Hill Pottery Ltd® in Kirkcaldy, Fife the most recognisable style has a rim of painted blue scallop - signed inside GHP

<https://wemyssware.co.uk>

thimbles are still produced but currently out of stock. They may be ordered



Hill at L



beehive



cats



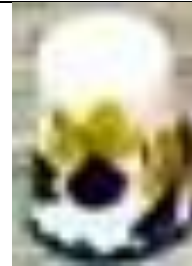
cherries



cockerel



cockerel hen



daffodil



dragonflies



flower





flower



flower



flower



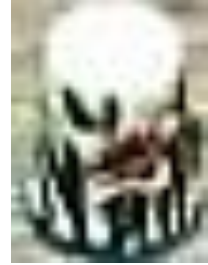
flower



flower



flower



flower



lemon



orange



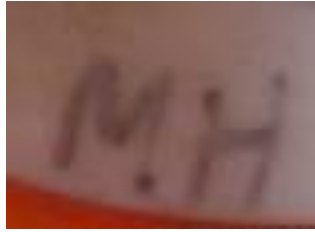
plums



violet

## Milwyn Holloway

Holloway (b.1940) is a Royal Worcester trained artist (1954-1971)  
 there he specialised in painting birds  
 most of Milwyn's thimbles since then have no inner markings  
 some examples have a generic backstamp  
 the thimble backstamp used is for Claymore Ceramics  
 Milwyn's bird thimbles are always signed MH near the bird  
 thimbles are not dated, nor are the birds named







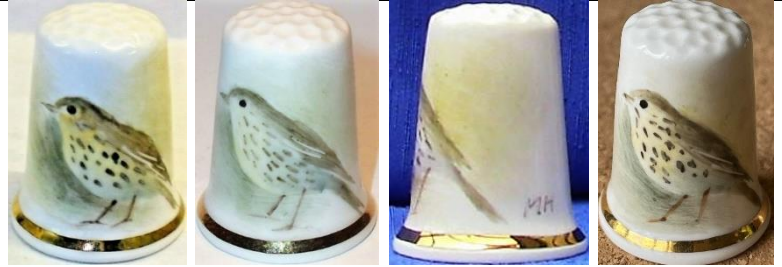
Magpie



Nuthatch



Robin



Song thrush



Woodpecker  
not in birds' set of 12



Wren



Yellowhammer



not in birds' set of 12



not in birds' set of 12



not in birds' set of 12



Highland cow

## Christopher Hughes

Hughes (born 1948) began his apprenticeship with Royal Worcester in 1960 and branched out on his own in January 1980

he has a studio in Holly Green Worcestershire where he painted thimbles from 1987

the backstamp inside the thimble is The Christopher Hughes Collection or Christopher Hughes (later)

his thimbles are signed Christopher Hughes on the outer rim

thimble apices are completely gilded, and sometimes they join the upper gilt line – he uses a thicker rim of gilding than other British painters. All are painted on fine bone china

thimbles are painted all round even if the verso is just a pale matching wash

thimbles are not named, nor dated



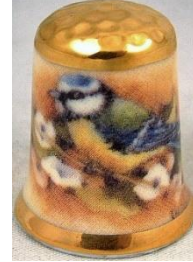
apple



Barn owl  
TTG August 2005



Bird of prey



Blue tit



Butterfly



Butterfly

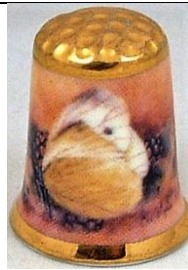


Butterfly





Butterfly



Butterfly  
with and without gold apex



Chrysanthemum



Church



Common Blue butterfly  
with and without gold apex



Daffodil



Finch



Fuchsia



Harebell



Grouse

R: no gold apex with birds positioned differently  
TTG April 2003



Highland cattle  
with and without gold apex  
L: TTG April 2003



Highland stag  
with and without gold apex



Hollyhock



Kingfisher



Little owl  
September 2005



Pear with strawberry



Red plum



Peregrine falcon  
TTG September 2005



Pheasants  
with and without gold apex  
TTG April 2003



Robin



Rose



Sheep  
with and without gold apex



Snowy owl  
with and without gold apex



Sparrow



White plum



Wren



## Julie Menzies

Menzies grew up the Biggar area in the lowlands of Scotland  
 she was never formally trained in art tho painting was a passionate hobby  
 Julie worked in the despatch section of The Thimble Guild (TTG) in Biggar until the owner, Arthur Bell,  
 discovered her artistic abilities  
 in 1993 she began to handpaint thimbles commissioned and personalised by thimble collectors thru TTG –  
 painting their pets, homes, gardens etc  
 she specialises in portraits and for five years Menzies was the TGG’s chief thimble artist  
 she became their chief designer of art in 1998-2005, which required her to create thimble designs  
 these were translated into lithographs or transfers/decals  
 tho her thimbles seem to be handpainted, all Menzies thimbles after 1998 are decaled thimbles  
 handpainted portraits fill the entire front of thimble – her decal thimble portraits are more cameo sized  
 her handpainted thimbles bear the signatures J.M., Julie. M. or Julie Menzies on fine bone china  
 with 22ct gold rims  
 Menzies can handpaint three thimbles a day – no wonder they were offered in limited editions  
 some thimbles will have the backstamp The Thimble Guild  
 Julie was also a designer for Sutherland China



Menzies January 1991 and 1999

 <p>90<sup>th</sup> anniversary 1921–2011              lettered in gold              Royal British Legion              limited to <b>250</b> - ed lettered om              verso              TTG November 2011</p>	 <p>Alexander Graham Bell              limited to <b>100</b>              TTG March 1997</p>	 <p>Art deco              Fruit              TTG August 1999</p>
 <p>Art deco              Geometric              TTG September 1999</p>	 <p>Art deco              House on a hill              six-sided              TTG June 1999</p>	 <p>Art deco              turret-shaped apex              TTG July 1999</p>



Art deco  
TTG October 1999



Best wishes New Year 2005  
TTG December 1994



Billy Wright  
limited to **200**  
TTG October 1994



Burt Lancaster  
TTG December 1994



Caernarvon Castle  
favourite ship could be personalised  
TTG February 1998



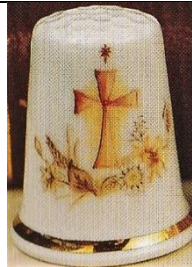
children's portraits  
portraits could be personalised  
TTG October 1993



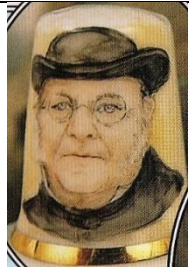
Clydesdale  
limited to **250**  
TTG March 1997



Colin Macrae (rally driver)  
limited to **250**  
TTG January 1996



Cross  
limited to **200**  
TTG March 1994



Donald Pleasance  
limited to **100**  
TTG March 1995



Doris Speed  
TTG December 1994



dream home  
your home could be personalised  
TTG August 1996



E & S (Edward and Sophie)  
19.6.99  
there is also a decal version



Fred Perry  
limited to **100**  
TTG March 1995



garden  
your garden could be personalised  
TTG April 1994





'Hale Bopp 1997'



'Hale Bopp 1997'

L: first edition which has more detail - limited to 250  
 R: city scene - lower: country scene  
 two unlimited editions with less detail  
 TTG May 1997



Henry VIII  
 limited to **75**  
 TTG February 1997



Jose Carreras  
 commissioned by the singer who is a thimble collector  
 TTG May 1994

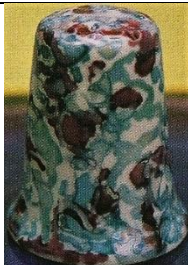


initials

Menzies follows 18<sup>th</sup> century French designs  
 your initials could be commissioned  
 limited to **175**  
 TTG July 1993



Lustreware



Lustreware  
 TTG March 1997



Lustreware  
 TTG September 1999



Lustreware  
 TTG September 1999



Lustreware  
December 1999



Meadow flowers  
limited to **100**  
October 1996



Neil Armstrong  
limited to **150**  
September 1994



Montserrat Volcano 1997



North Sea oil  
Swarovski crystal in apex  
limited to **250**  
TTG December 1994



Peace and goodwill  
limited to **125**  
TTG December 1995



Peace in Northern Ireland  
limited to **150**  
TTG March 1995



pet  
your favourite pet could be  
personalised



Queen Elizabeth II 70<sup>th</sup> birthday  
19.4.96  
TTG April 1996



Queen Elizabeth II 85<sup>th</sup> birthday  
19.4.2011  
limited to **85**  
TTG April 2011



Queen Elizabeth the Queen  
Mother 95<sup>th</sup> birthday  
Swarovski crystal in apex  
limited to **350**  
TTG August 1995



Rose  
TTG April 1997



Roy Castle  
limited to **250**  
TTG October 1994





Sam  
symbol of the koalas injured in Victorian 2009 bushfires



Scenes of Jubilation 50 years  
limited to **500**  
TTG April 1995



Snowflake  
spot of gold paint in each flake  
limited to **150**  
TTG January 1997



Soufreire Hills Volcano  
Montserrat  
TTG October 1997



Strawberry  
limited to **20**  
TTG August 2016



Teddy bear  
baby's name can be personalised  
TTG December 2009



The Golden Hind  
limited to **450**  
TTG March 1996



The Longest Day 50 years  
limited to **250**  
TTG May 1994



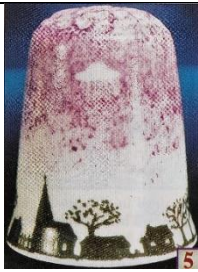
The night before Christmas  
TTG November 1996



To a mouse  
(after Robbie Burns)  
limited to **149**  
TTG January 1994



Toy train  
baby's name can be personalised  
TTG December 2009



UFO  
limited to **450**  
TTG May 1998



Viva Espana!  
limited to **75**  
TTG July 1994



West Highland Terrier  
favourite pet can be personalised  
TTG March 1998



Xmas 1999  
pontilist style  
TTG November 1999



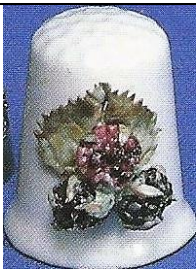
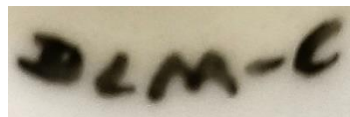
William & Kate 29<sup>th</sup> April 2011  
golden lovebirds  
TTG April 2011

### Dorothy Mortimer-Coy (DML-C)

Flowercraft  
Sponden Derby

former Royal Crown Derby artist

her thimbles are signed inside – further information is on a sticker on base of thimble box



Blackberries  
TTG August 1987



Blue poppy



Buttercup



Daffodil



Dog rose  
TTG July 1987



Forget-me-nots



Pink rose



Scabiosa



pink





Wild rose

Yellow rose

**Peter Platt**

Platt (born 1935) was commissioned by The Thimble Society of London to paint thimbles in 1990s for sale thru their catalogues

he is Royal Worcester trained (from 1951)

Peter's thimbles, once he left RW, are uniquely his own: plenty of gilding and the subjects are set in an ornate cameo

signature is P Platt which can usually be found in the lowest part of the cameo



EIR 1952 - 1992  
gilded by Russell  
commissioned by TSL



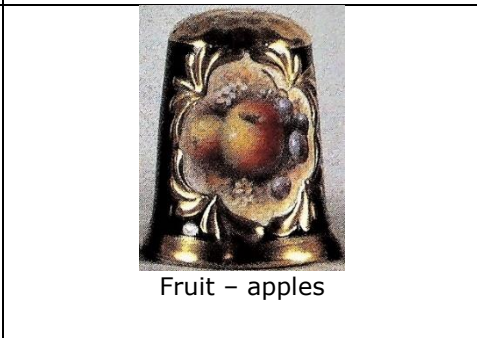
Flowers  
gilded by Russell



flowers



Fruit - apples  
TSL summer 1991



Fruit - apples



Fruit - apples  
TSL summer 1992



Kingfisher  
gilded by Russell

## Ryoko Ottignon

Ryoko's studio - Ottignons of Norfolk – is in Starston where she is the hand decorator and ceramist  
 Ottignon's thimbles are based on copies of Georgian designs from 1780s – designs found on cups and saucers of Lowestoft (1757-1802) and New Hall (1781-1835) porcelain factories  
 maker's mark in the form of a sandglass ii burnished gold is painted on the inside  
 (it may look like the Roman numeral for ten when the dot isn't clear)

her thimbles require five firings to fix the colours and glaze on the cream porcelain

thimbles are presented in thimble boxes handturned in mahogany and waxed to give an antique patina  
 accompanied by a signed, dated and numbered certificate – the list of what else Ottignons retails is listed  
 on the verso of each certificat

the glaze has crazed with age on her white thimbles



pattern recurs all round



R: certificate 1978  
 see also: white version







R: certificate October 1978



Ladybird

R: certificate July 1978



### Rachel Pugh

Pugh handpainted bone china thimbles for The Thimble Guild from September 2000 she was also a designer at TTTG from 2000-2005 where her art was translated into decals Pugh was born in Cumbria. She lives in Cyprus where she still designed thimbles for TTTG Rachel's signature R.Pugh is on the inside of the thimble, often using gold paint if the thimble is named, it is lettered inside



Ambergate daffodil  
gold apex  
TTG April 2002



Armistice poppy  
gold apex  
TTG November 2001



Armistice  
TTG November 2000





Autumn  
TTG October 2000



Christmas rose  
TTG December 2000



Cyclamen  
gold apex  
TTG October 2002



Daisy field  
TTG June 2001



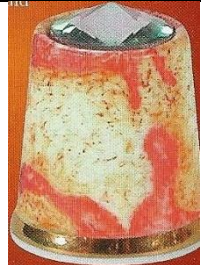
Deck chair  
raised paint  
TTG August 2004



Dove of peace  
textured paint  
TTG June 2003



Early snowdrop  
raised paint  
TTG January 2001



Exploring Mars  
Swarovski crystal in apex  
TTG April 2004



Frosty snowman  
raised matt glaze  
TTG December 2004



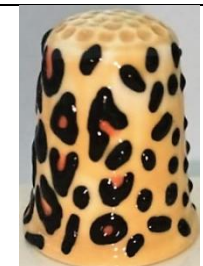
Giraffe  
raised patterning  
TTG October 2003



Iris reticulata  
gold apex  
TTG February 2002

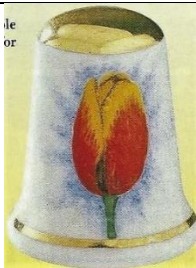


Jungle Flowers  
after Henri Roisseau  
TTG August 2001



Leopard  
raised spots  
TTG December 2003





Keiserskroon tulip  
gold apex  
TTG May 2002



Lily  
gold apex  
TTG September 2002



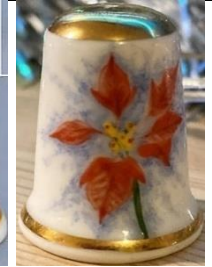
Moorcroft style  
raised design  
TTG May 2004



'Peace on earth'  
suede glaze to create sandy  
surface  
TTG November 2003



Peacock feathers  
TTG April 2004



Poinsettia  
gold apex  
TTG December 2002



Poppies at Argenteuil  
limited to **50**  
TTG June 2004



Purple pansy  
gold apex  
TTG March 2002



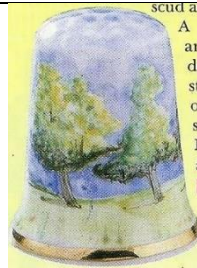
Rose  
gold apex  
TTG June 2002



Snowdrop  
gold apex  
TTG January 2002



Springtime  
TTG April 2001



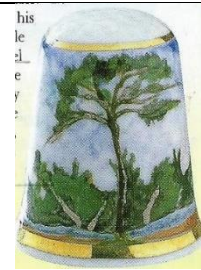
Summertime  
TTG September 2000



Sunflower  
gold apex  
TTG August 2002



Sweetpea  
gold apex  
TTG July 2002



The Great Pine after Cezanne  
TTG October 2001



The Lily Pond  
after Monet  
date next to signature  
TTG July 2001



'Thimble' in Braille  
in raised writing  
TTG June 2003



Tiger  
raised painted stripes  
TTG September 2003



Tropical fish  
TTG September 2004



Valentine  
TTG January 2004



Van Gogh  
TTG August 2001



Winter snowflake  
white glaze  
TTG January 2003



Winter wonderland  
raised matt glaze  
TTG December 2003



Wintertime  
TTG February 2001



Yellow freesia  
gold apex  
TTG November 2002



Zebra  
raised painted stripes  
TTG November 2003

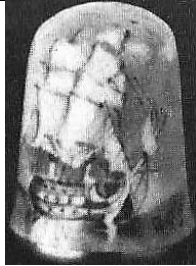


## Roger Shufflebotham (R.A.S.)

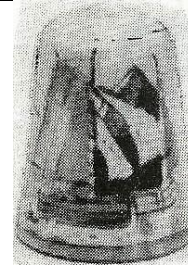
Shufflebotham was an early painter for Caverswall  
he is known as a marine artist  
his thimbles are signed R.A.S.



fruit



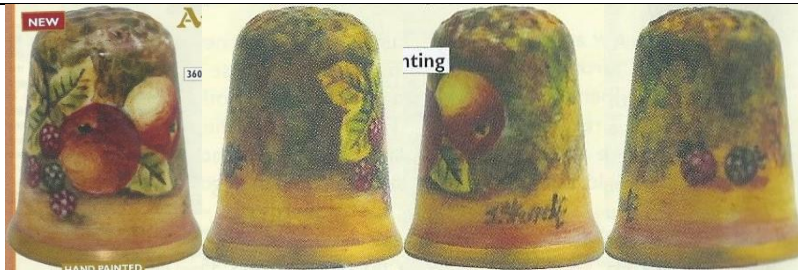
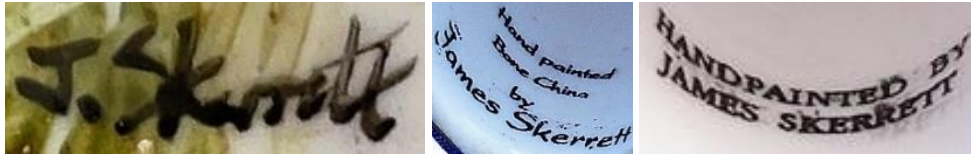
H.M.S Victory  
limited to **40**  
TTG June 1983  
b&w photo



Thames barges  
limited to **40**  
TTG April 1983  
b&w photo

## James Skerrett (JS)

Skerrett trained at Royal Worcester  
 in 2012 he was the artist-in-residence at the Worcester Porcelain Museum  
 James's J Skerrett signature is found on the outside. Earlier thimbles signed JS  
 there are several varieties of decaled marks inside Skerrett thimbles



Autumn fruits  
 TTG September 2012



Christmas roses  
 with hedgerow berries  
 TTG December 2012



Remembrance poppy  
 with cornflowers and marguerites  
 TTG October 2012



bird





fruit  
signed 'JS'



hedgehog



roses

**Ann Taylor**

Scotland  
signed A Taylor



Brig o' Turk  
limited to **99**  
TTG July 1992



Chinese male character  
limited to **100**  
TTG April 1992



Chinese man serenading woman  
limited to **100**  
TTG April 1992



Choirboy  
limited to **245**  
TTG November 1992



Dragon  
limited to **100**  
TTG April 1992



Sewing  
limited to **150**  
TTG July 1993

# Trude Crafts

Penmaenmaer, Wales

I have seen some of her thimbles that are decaled



'Blue tit'  
1992



'Chiffchaff'



'Green woodpecker'



'Grey wagtail'



'Robin'



'Siskin'



'Song thrush'



'Conwy Castle Conwy'



Fragonard style in a matching thimble box





Fragonard style

## Bryn Weightman

Gwahaniaeth Crafts, Wales

Weightman, wife his wife Doris paints his bone china thimbles mainly as figures – some of his thimbles have caps or hats of polymer clay – they are outside this study signed Bryn



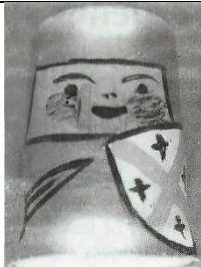
cottage  
TTG June 1986



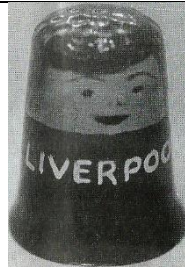
Beaver scout



Friar Tuck  
TTG April 1986



Crusader  
TTG February 1987  
b&w photo



Liverpool  
Bryn would add club of your choice  
TTG June 1987  
b&w photo



gypsy



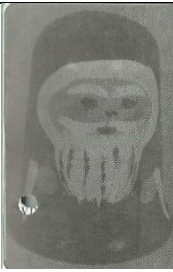
Manchester City



Matrioshke doll  
TTG February 1986



sailor



santa  
TTG November 1986



scout



Trefoil guide



snowman



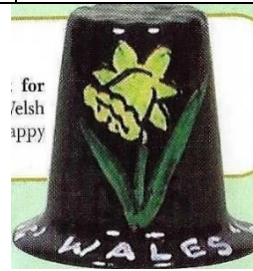
Venture scout



Welsh guard



woman with necklace



'Land of song Wales  
TTG February 2003



## Sheila Whitcombe

Whitcombe (nee Watson) began painting portraits at 16  
she became a modeller for Royal Worcester, so never painted thimbles for them

Sheila paints under the name of Dunheved from Cornwall  
signed S Whitcombe on the front of bone china thimbles – sometimes inside, in lower case

Dunheved thimbles are unusually large measuring 30-35cm in height

this gives the artist a larger surface to paint

she needed specialised knowledge of ceramic oxides to paint her historical figures with their jewel colours

the name is lettered on the outside verso

Sheila's painting may creep onto the apex to complete the picture

her artwork is quite pale – the colours here are stronger for clearer pictures

last thimble seen 2005 mail order catalogues



Armada 400<sup>th</sup>  
anniversary 1588-  
1988



Charles I  
TTG October 1994



cheetah



Chevaliers Gardes Officer 1796



Chopin 1810-49



Cornflowers  
with Spring peas  
TTG April 2001



Cornish piskey  
limited to **84**



Devon



dog



First Fleet  
departure 1787  
set of twelve painted for  
Australia's bicentenary  
1988



First Fleet  
departure 1787



First Fleet  
departure 1787



First Fleet  
departure 1787



First Fleet  
Tenerife 1787



First Fleet  
Rio de Janeiro 1787



First Fleet  
Cape of Good Hope 1787



First Fleet  
arrival 1788



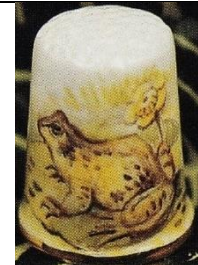
First Fleet  
arrival 1788



First Fleet  
arrival 1788



First Fleet  
arrival 1788



Frog  
TTG March 1993



Fruit - berries  
TTG May 2005



Goose





Goose



Harebell  
with Venus Looking Glass  
TTG August 2001



Henry VIII  
TTG February 1992



Ladybird  
with dog rose



lion



Lorna Doone farm



Padstow



Pansy flower fairy



Polperro



Poppy flower fairy



Queen Elizabeth I  
limited to **90**  
TTG June 1996



Queen Elizabeth II 1993  
TTG May 1993



Queen Mother



Queen Mother



Queen of the Meadow flower fairy



Queen Victoria  
limited to **350**  
TTG November 1992



Rabbit



Rabbit



Reindeer  
Christmas 1988



Richard III  
TTG March 1992



Roses



Roses & forget-me-nots  
TTG July 2002



Sir Francis Drake



Strawberry flower fairy



Snowdrop flower fairy



terrier



The Cobb Lyme Regis





Thrift flower fairy



Unicorn



Weston Super Mare



### Derek Wilson

Wilson is a Royal Worcester trained artist, 1930-1954

he paints under the name of Dunheved from Cornwall, in his studio near Launceston signed D Wilson, often cleverly camouflaged, on the outside of the bone china thimble Dunheved thimbles are unusually large measuring 30-35cm in height ('generously sized')

this gives the artist a larger surface to paint

being a birdwatcher and a wildlife artist, Derek's thimbles are painted around British birds, wildflowers and animals, and some of the Cornish countryside also feature. The latter may have been sold all over Cornwall?

bird name is lettered on inside rim – places on the outside verso

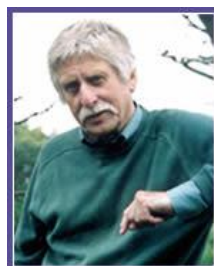
when the number painted is limited, the number is printed on the inside

Derek works on two sizes of Dunheved thimbles – the smaller size thimblette is used in the catalogues. These were used more frequently towards the end of his career

last thimble seen thru TTG was July 2011



green Dunheved mark is from late 1970s when smaller sized thimbles were used - not signed





Anne Hathaway's  
cottage  
limited to **250**  
TTG May 1992



Avocet  
TTG June 2005



Badger



Badger and robin  
limited to **195**  
TTG January 1998



Badgers  
TTG July 1998



Badgers  
TTG June 2009



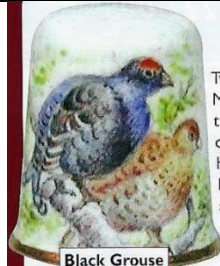
Barn owl  
TTG June 2004



Barred owl  
TTG July 2004



Bearded tit  
TTG May 2005



Black Grouse  
TTG October 2005



Black grouse  
TTG January 2007



Black redstart



Black tailed godwit



Blackbird  
TTG December 2002



Blackbirds  
TTG January 2007



Blackbirds



Blackcap  
TTG February 2006



Blue tit  
TTG December 2002



Blue tit  
TTG June 2010



Bluethroats  
TTG October 2006



Brambling  
TTG September 2003



Bramblings  
TTG May 2006



Budgerigars  
TTG August 2004



Bullfinch  
limited to **150**  
TTG June 1994





Bullfinch  
limited to **200**  
TTG June 1998



Bullfinch  
TTG July 2004



bunny



Chaffinch  
limited to **125**  
TTG September 1999



Chaffinch  
TTG May 2005



Chaffinch



Chaffinch



Chaffinches  
TTG July 2007



Cheddar Gorge



Chiffchaff  
TTG January 2011



Choughs  
TTG September 2005



Christmas rose  
Christmas 1990



Church with sheep



Curlew



Cockerel and hen  
TTG June 2004



Collared (sic) doves  
TTG August 2007



Comma butterfly  
TTG February 2011



Corky the Cock  
limited to **200**  
TTG October 1993



Cornish cottage



Cornish Tin Mine –  
Levant  
1983



Crested tit  
TTG March 2005



Curlew  
TTG June 2007



Dabchicks  
TTG August 2007



Dartford warbler  
limited to **200**  
TTG August 2000



Devon estuary -  
Polperro  
limited to **150**  
TTG April 1993



Dipper  
TTG August 2006



Dormouse  
TTG March 2004



Ducks



Eagle owl  
TTG September 2002



English cottage  
TTG June 1991



Field fare



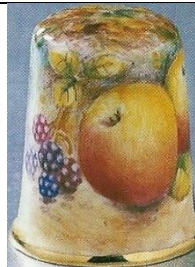
Firecrest  
TTG September 2003



Fox and robin  
limited to **150**  
TTG February 1999



Frenchman's Creek



Fruit  
TTG March 2004



Geese  
limited to **150**  
TTG November 1997



Gloucester Old Spot pig  
TTG April 1995



Goldcrests



Golden eagle  
TTG October 2008



Golden Hind





Golden oriole  
TTG November 2004



Golden plover  
TTG March 2006



Goldfinch  
TTG February 2005



Goldfinch  
TTG March 2009



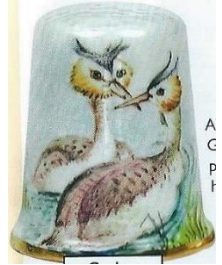
Goldfinch



Goosanders  
TTG January 2008



Goose



Great crested grebe  
TTG June 2005



Great spotted woodpecker  
limited to **100**  
TTG December 1995



Great tit  
TTG August 2001



Green woodpecker



Greenfinch  
TTG April 2004



Greenland falcon  
TTG January 2007



Grey seals  
TTG April 1998



Grey thrush  
TTG July 2002



Grey wagtail

Grey wagtail  
TTG April 2006



Grey wagtail



Guy Fawkes  
TTG November 1995



Hare  
TTG July 2011



Hare and robin  
Christmas 1996



Harvest mouse



Hedgehog  
limited to **150**  
TTG April 1993



Hedgehog  
TTG November 1996



Hedgehog and robin



 <p>Heron TTG June 2005</p>	 <p>Highland cattle limited to <b>150</b> TTG February 1996</p>	 <p>Hoopoe TTG April 2005</p>	 <p>House Christmas 1998</p>
 <p>House martin TTG April 2007</p>	 <p>House-sparrows TTG May 2008</p>	 <p>Jack Russell TTG April 1994</p>	 <p>Jamaica Inn TTG April 2002</p>
 <p>Jay TTG January 2005</p>	 <p>Kestrels TTG November 2007</p>	 <p>Kingfisher</p>	 <p>Kingfisher limited to <b>200</b> TTG June 1993</p>
 <p>Kittiwakes nesting TTG July 2005</p>	 <p>Knot TTG June 2008</p>	 <p>Lapwing</p>	 <p>Lesser spotted woodpecker</p>
 <p>Linnets</p>	 <p>Long eared owl</p>	 <p>Long tailed tit TTG February 2009</p>	 <p>Looe</p>
 <p>Lovebirds TTG June 2006</p>	 <p>Mallard</p>	 <p>Mandarin ducks</p>	 <p>Meadow pipit TTG September 2010</p>





Meerkats  
TTG August 2010



Mevagissey



Mistle thrush  
with mistletoe berries



Mole  
TTG January 2010



Mousehole  
limited to **250**  
TTG September 1992



Mousehole  
limited to **250**  
TTG August 1996



Mute swan  
TTG August 2006



Newlyn  
limited to **150**  
TTG May 1995



Nightingale  
TTG April 2006



Nuthatch  
TTG August 2002



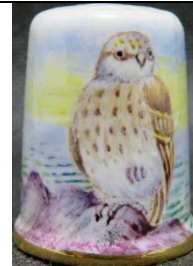
Nuthatch  
TTG September 2004



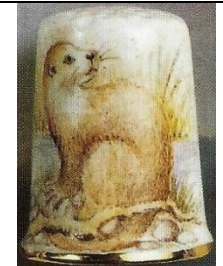
Old Spot



Orchard blackbird  
TTG July 2010



Osprey  
TTG January 2006



Otter  
limited to **125**  
TTG May 1993



Otter  
TTG February 2003



Otter  
TTG November 2009



Over the Bar Bideford  
TTG September 1993



Oystercatcher  
TTG June 2001



 <p>Partridge &amp; rabbit Christmas 2006</p>	 <p>Partridges Christmas 2006</p>	 <p>Peacock</p>	 <p>Penguin Christmas 1991</p>
 <p>Peregrine falcon TTG October 2004</p>	 <p>Pheasant TTG December 2001</p>	 <p>Pheasant and partridges Christmas 1989</p>	 <p>Pheasant and partridges TTG December 2005</p>
 <p>Pheasants limited to <b>195</b> TTG December 1992</p>	 <p>Pheasants TTG December 2007</p>	 <p>Pied flycatchers TTG October 2006</p>	 <p>Pink cockatoo TTG July 2003</p>
 <p>Polar bears Christmas 1992</p>	 <p>Polperro</p>	 <p>Ptarmigan TTG October 2005</p>	 <p>Puffin TTG February 1994</p>
 <p>Puffin TTG October 2003</p>	 <p>Quail TTG October 2006</p>	 <p>R.M.S Titanic sank 2.20am April 15 1912</p>	 <p>Red fox TTG October 1994</p>
 <p>Red grouse limited to <b>175</b> TTG August 1993</p>	 <p>Red grouse TTG July 2006</p>	 <p>Red squirrel TTG July 2009</p>	 <p>Red starts</p>



 <p>Redwing TTG February 1994</p>	 <p>Redwings TTG February 1994</p>	 <p>Redwings TTG February 2008</p>	 <p>Reed buntings TTG April 2008</p>
 <p>Ringed plovers TTG January 2008</p>	 <p>Robin 1986</p>	 <p>Robin Christmas 1987</p>	 <p>Robin TTG November 1995</p>
 <p>Robin TTG November 1997</p>	 <p>Robin TTG November 2000</p>	 <p>Robin TTG January 2003</p>	 <p>Robin TTG January 2005</p>
 <p>Robin TTG November 2005</p>	 <p>Robin TTG November 2006</p>	 <p>Robin Christmas 2007</p>	 <p>Robin TTG December 2007</p>
 <p>Robin with house</p>	 <p>Robin with blue tit</p>	 <p>Robins TTG November 2005</p>	 <p>robins</p>
 <p>Rose-coloured starlings TTG April 2007</p>	 <p>Rock-pipit TTG September 2006</p>	 <p>Ruby throated hummingbird TTG May 2003</p>	 <p>Ruff TTG September 2007</p>



 <p>Sanderling TTG June 2008</p>	 <p>Sand-martins TTG May 2008</p>	 <p>Scops owl TTG June 2003</p>	 <p>Sheep limited to <b>145</b> TTG September 1996</p>
 <p>Shepherds Christmas 2000</p>	 <p>Shore-lark TTG September 2007</p>	 <p>Sidmouth</p>	 <p>Skylark TTG May 2007</p>
 <p>Snipe TTG April 2008</p>	 <p>Snow bunting TTG January 2001</p>	 <p>Snow goose TTG November 2003</p>	 <p>Snowman</p>
 <p>Snowman Christmas 1990</p>	 <p>Snowman Christmas 1997</p>	 <p>Snowman TTG November 2000</p>	 <p>Snowman tobogganning TTG November 1994</p>
 <p>Snowy owl TTG November 2003</p>	 <p>Snowy owl</p>	 <p>Somerset cottage</p>	 <p>Song thrush TTG May 1994</p>
 <p>Song thrush Christmas 2006</p>	 <p>Sparrowhawk</p>	 <p>Spotted crake TTG October 2007</p>	 <p>Squirrel TTG November 2001</p>





St Michael's Mount  
TTG February 1993



Stonechat



Suffolk sheep  
limited to **150**  
TTG March 1995



Swallows  
TTG March 2004



Swallows



Tawny owl  
TTG December 2008



Tawny owl  
TTG March 2002



Teal  
limited to **150**  
TTG January 1997



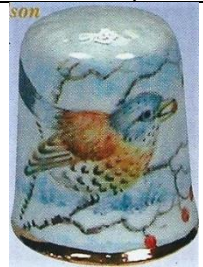
Teddy bear



Thatched cottage  
TTG August 2009



Thomas Hardy's cottage



Thrush  
TTG January 2004



Tintagel Castle  
limited to **250**  
TTG August 1996



Tomago House N.S.W.



Tree creeper  
TTG September 2004



Tree creeper  
TTG October 2007



Turkey  
Christmas 1994



Turnstone  
TTG May 2007



Turtle dove  
TTG September 2006





Twite  
TTG January 2009



Valley of Rocks Lynton  
limited to **83**



Venice



Water-rail  
TTG June 2007



Water shrew



Waxwing  
TTG April 2003



Wells Cathedral



Wheatear  
TTG February  
2006



Whinchat  
TTG February 2007



White stork  
TTG June 2006



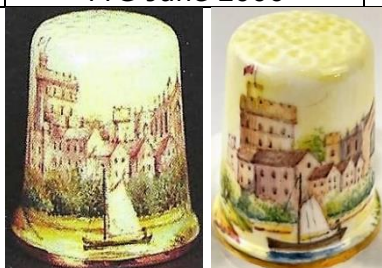
Whitethroat  
TTG March 2005



Willow tits  
TTG November 2007



Willow warbler



Windsor Castle  
limited to **350**  
TTG December 1992



Winter  
TTG December 1996



Winter partridges  
TTG October 2002



Witch  
limited to **150**  
October 1995



Woodcock  
TTG August 2005



Wood-lark  
TTG December 2005



Woodlark  
TTG March 2007





Wren  
TTG July 1997



Wren  
TTG January 2003



Wren  
TTG May 2005  
/February 2008



Wren  
TTG March 2007



Yellow wagtail  
TTG September 2008



Yellow hammer  
TTG April 2003



Yellowhammer  
TTG February 2005

### Georgina Winkley (GMW)

Wales



1997



1997



1997



1997



## Anne Young

Young's barge or canal ware painting is uniquely British she certainly mastered this folk art form in the miniature size required to paint on thimbles most of her thimbles are signed and some are dated – they range from 1980s-1990s Anne's thimbles are signed on the inner rim Anne Young – lettered upside down dates when included are also inside there are traditional background colours and the lovely gloss adds to their appeal it's the trim around the rim where one sees the details the main design is replicated on the verso Young also paints wooden thimbles



L: 1998 – her book – sticky label







green



green  
distinctive yellow rim



red  
1998



red



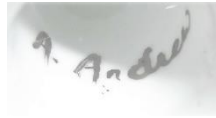
red



white

## Other painters - named

### A Andrew

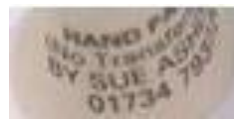
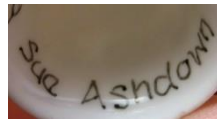


Poinsettia

### Sue Ashdown

Reading

'handpainted - no transfers or decals used'



'Welsh Thimblers  
limited to **30**

TTG September 1990'

Daffodils with their thimble emblem on verso



daffodils



**Lorraine Bates**

born 1964

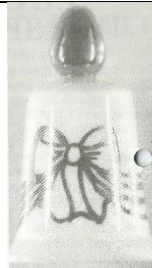
graduate of Bath Academy of Art 1986

daughter of Gill and David Bates of Woodsetton Peeps

set up her own pottery, Woodsetton Arts Pottery, alongside that of the family business  
handpaints some of their enamelled brass thimbles



'for Mum'  
TTG February 1986  
b&w photo



Easter 87  
TTG April 1987  
b&w photo



'Get well soon'  
TTG May 1986  
b&w photo



Teddy  
TTG September 1986  
b&w photo

**M Bates**

painter for Caverswall



blackberries  
circa 1977

**Monica Bowron (MB)**



Highland landscape  
limited to **150**  
TTG October 1985  
b&w photo

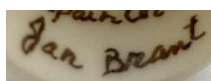


Stonehenge  
TTG May 1986



Wiltshire Downs  
limited to **150**  
TTG September 1986  
R: original catalogue entry

**Jan Brant**



Blue tit

**Don Cameron (DC)**



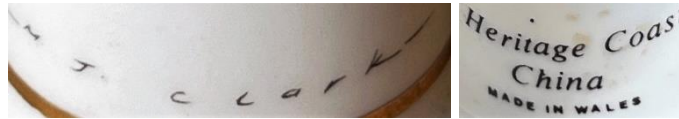
agateware  
TTG April 1977



**M J Clarke**

Wales

Georgina painted for Heritage Coast China. Signature is on the outside



owls

**D J Coggan**



'The Queens 60<sup>th</sup> birthday 21 April 1986'  
commissioned by TSL  
limited to **800**



'A S (Andrew and Sarah) married 23 July 1986'  
commissioned by TSL  
bee is Sarah's emblem  
limited edition



'Ruby wedding of H.M. Queen Elizabeth II & Philip, Duke of Edinburgh 20 Nov. 1947-1987'  
gold apex

**Harry Colclough**

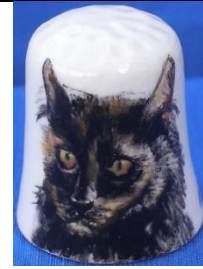
worked for Royal Grafton for 30 years



cat



Horse and cart  
TTG June 1985  
b&w photo



'Tuppence'



'The Orchards? (1950'  
backstamp is Healcraft Fine Bone China

**Joan Dahl**



**Anne Dalton**

Ottervale China Company Devon  
Anne also painted character head thimbles





**Deirdre**  
Guernsey



Goldfinch



Linnets

**V Fawcett**  
Ilkley



flowers

**D Fuller**



Wren

**Shelly Gardner**



Unicorn

**Irene Glendining**



Wren

**Patsie Griggs**



Chick



Flowers

**R Hall**



pansy

**J Humphries**





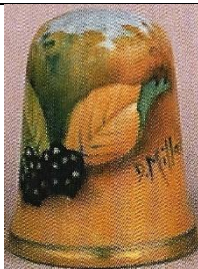
**Leslie Lamb**  
Ross-shire Scotland



Goldfinch  
TTG July 1984



**D Miller (DM)**  
painter for Caverswall  
some thimbles have the full signature, others the initials



fruit c.1985



dragon

**Clare Montgomery (CM)**  
Ballymena Northern Ireland



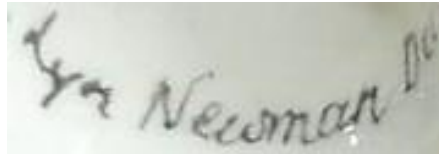
Wildflowers of Ireland

**Rachel Munday**



Kingfisher  
limited to **245**  
TTG September 1999

**Lyn Newman**



**Dorothy Newsome**



'DTS 2nd International Conference 7.8.9 June 1991'

Dorset Thimble Society

their 3<sup>rd</sup> Conference thimble was made by Birchcroft probably with the design by Newsome  
limited edition



'DTS 1985 - 2005'  
limited edition



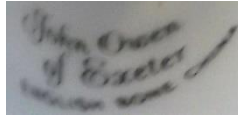


**J Oliver**



forget-me-nots  
1988

**John Owen of Exeter**



Devon W.I.  
1920-1995  
violets

**Penny**



**A F Pinxt**



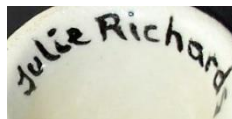
'Embroiderers' Guild 1906-1981'  
limited to **100**



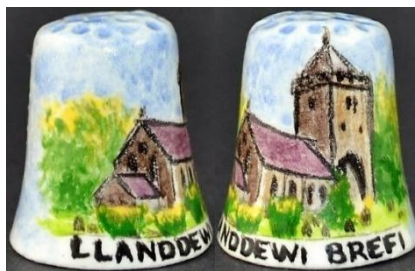
'Margate'  
1982

TSL spring 1983  
b&w phptp

**Julie Richards**  
Wales

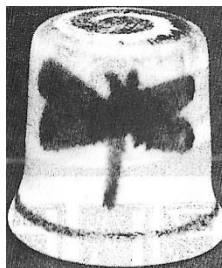


lettered upside-down



'Llanddewi Brefi'

**Susan Senior**  
Scottish potter



white porcelain cobalt blue butterfly  
TTG June 1994  
b&w photo



**Sylvia Smith**

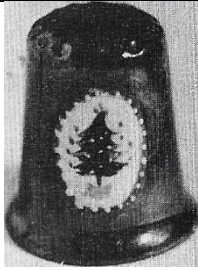


Latticed flowers – mauve  
TTG November 1990



Latticed flowers – turquoise  
TTG November 1990

**Sheila Southwell**



Christmas tree  
on pine green lustreware  
limited to **100**  
TTG November 1984  
b&w photo



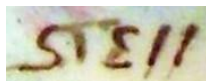
rose  
on blue lustreware  
limited to **50**  
TTG August 1983

**Steffie**



watchtower

**Stell**



roses

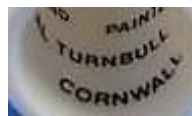
**E Trillsam**



chickens

**Val Turnbull**

Cornwall



fuchsias

**Susan Ware**

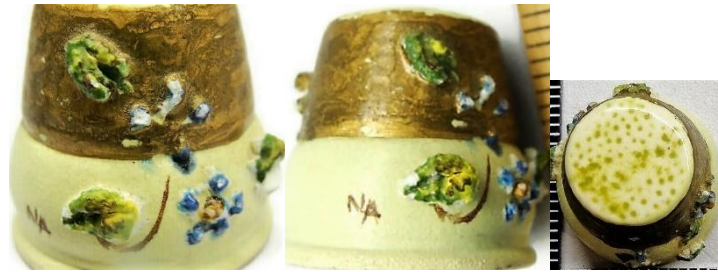


snowman  
1986



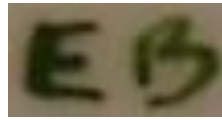
**Other painters – initials only**  
(arranged in alphabetical order by last initial)

**NA**



pottery

**EB**



forget-me-nots

**'C'**

**EMB**



signed on outside



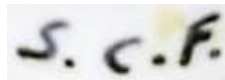
blue tit  
lettered 'Anne'

**HSB**



harebells - heath

**S.C.F.**



metal affixed

**FG**



anemones

**EH**



signed on outside



poppies



**JH**



'Mount Stuart House and Gardens'

**EJ**



poppies

**NJ**



**J.K.**



signed on outside



harebells

**MgM**



signed both on in- or outside – R impressed inside



swans



violet affixed

**RMCK**



Harebells



Snowdrops

**RSM**



violets  
1984

**JMN**



signed on outside





pansy



primrose



rose



**BR**

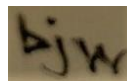


'Cuckoo pint' arum

**RS**



**bjw**



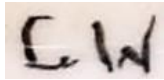
hedgehogs

**CTW**



ladybirds

**CW**



'Seacombe Pottery 1852-1864'

**D.W**



peach with plum

**P.W.**



fruit



## Other painters – British topic or thimble shape but no marks

(saved here so they don't get lost or a painter's name comes to light – US porcelain thimbles are usually squat with a flat top)

They may have a signature but it is indecipherable



forget-me-nots



poppies  
'Severn Valley'



'Strontian'  
Scottish village  
sheep



tree with fence



roses  
same painter as violets  
indecipherable initials



violets  
indecipherable initials

## References

- Charlotte Goldberg *David Roy Bowkett former Royal Worcester artist 1948-1962*. [TCI Bulletin](#) summer 2014  
Susan Gowan *Handpainted thimbles* (Peter Carver) [NTSCA Newsletter](#) February 2014  
Friedy Kamp *Vingerhoed Nieuws catalogues* 1993-2008  
Coilin Millett *The wonder of Worcester: an illustrated history*. 2020  
The Thimble Guild (TTG) *catalogues* 1983-2005  
Thimble Society of London (TSL) *catalogues* 1981-2013  
Bertus van den Dikkenberg *Het Vingerhoedje*. 1998

## Contributors

Wendi Aguiar | Sally Bailey | Joanna Blackie-Sew Many Bits | Yolanta Bogdziewicz | Pawel Brzyski | Joy Carlsen Earles  
Charlotte Goldberg | Andrea Griffiths | Linda Heggs | Lynda Herrod | Doreen Lilley-Pricklepin | Simon Lloyd-Edwards  
Carolyn Meacham-Elegant Arts | Amanda Nevin | Maurice O'Reilly | Diane Poesk | Sue Roberts | Mabel Rogers  
Jean Rose-Miss Mouse | Linda Samaripa | Mer Saucedo | Wolf-Dieter Scholz | Jean Taylor | Bertus van Dikkenberg  
Michael Wheeler | Melissa Yauk | Krystyna Zagajewska

This listing of Modern British handpainted china thimbles does not purport to be complete or accurate in all aspects.  
Rather it invites comment and contribution to add to our knowledge. My thanks to the contributors.

EMAIL [thimbleselect@bigpond.com](mailto:thimbleselect@bigpond.com) TO SHARE YOUR KNOWLEDGE

© Sue Gowan  
February 2022