

# Nineteenth century and unsigned Royal Worcester thimbles

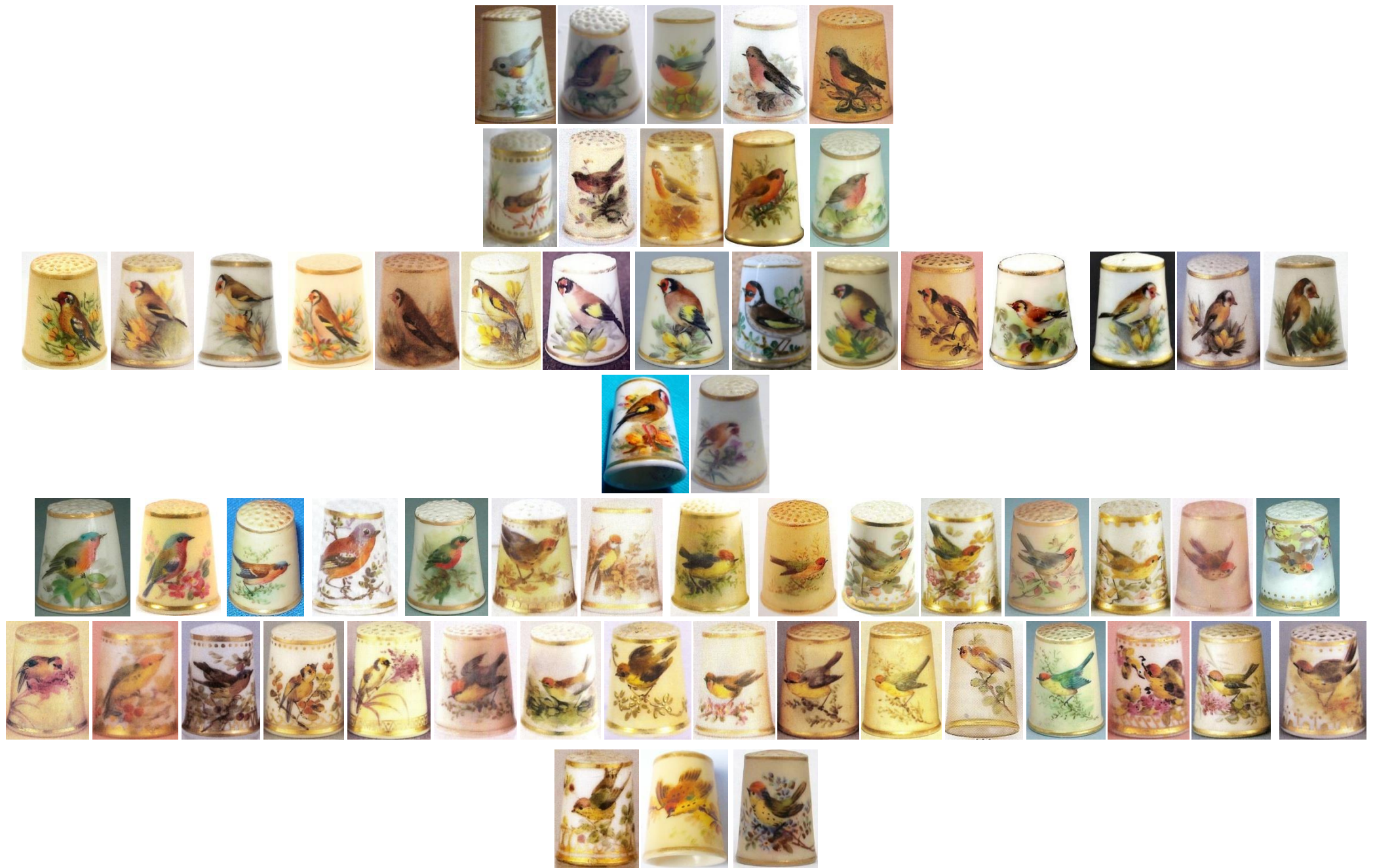
It is rare to find in the early Royal Worcester thimbles that the apex has been gilded - usually a sign that if it is gilded, the thimble is not an early Royal Worcester

It seems a logical order to show you some of these lovely works - to group them into broad topics.

## A range of handpainted birds









**A range of handpainted flowers**

the holly one (at the end) has a robin on the verso – there is a band of roses too – a first?





**There is a small range of handpainted insects**



## A range of jewelled thimbles

The geometric painting is often described as "jewelled", with droplets or enamelled paint. The green ones at the end are rarer than the other coloured "jewels": as is the bi-coloured one!!

In the photos below a few thimbles appear to have a gold painted apex. There is only a gilded line at the apex. Those that appear to have a gold painted apex, it is just a poor photo or a trick of the light. No gold painted apex.





### **Fruit**



By observation from compiling the above gallery of early handpainted Royal Worcester thimbles, it is apparent that fruit as a subject belongs to the 20th century - and that the jewelled thimbles belong to the 19th C?

---

The list of Contributors may be found in the Royal Worcester thimble painters topic

**© Sue Gowan  
December 2002**