

Graham Payne 1981-1996

Worcester England

Graham Payne was a freehand miniature painter on thimbles - so talented, which is borne out by the fact that he painted both china and enamelled thimbles. The earliest thimbles I can find are dated 1981. Payne who was based in Grimley, Worcester, used several different Payne backstamps and a date is mostly incorporated alongside. Note the date of each photo to give a timeline. Most have the 'e' in Payne joined by an underscore which includes the date.

 <p>Hand painted Graham Payne Studios Worcester only used on enamelled thimbles</p>	 <p>Payne Grimley Worcs</p>	 <p>Payne Worcester</p>
		 <p>Payne</p>
 <p>Payne Worcs, England</p>	 <p>Payne U.K.</p>	
 <p>Graham Payne</p>	 <p>Payne</p>	

Some of the thimbles from the Studio also bear a signature or initials of the painter and this includes Graham Payne's (G Payne/GP) signature or initials. Other painters employed include JS/John Smith - these initials sometimes look like SS - they are rather for Steve Smith - J Oram for Judy Oram and RW for Rosemary Waldron, PG, VT and WM. I can't find any artist for the last two sets of initials that match any amongst the Royal Worcester where most of these painters were trained. You will find these signatures on both the china and enamelled thimbles.



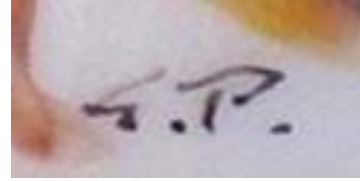
china



enamelled



enamelled



china

various Graham Payne signatures



china

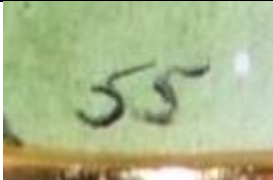


enamelled



enamelled

various John Smith signatures found mainly on enamelled thimbles



enamelled

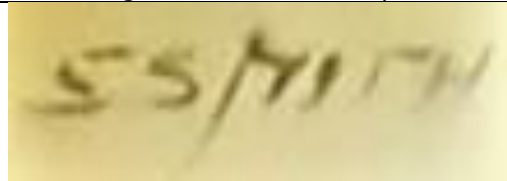


enamelled



china

various Steve Smith signatures found mainly on enamelled thimbles



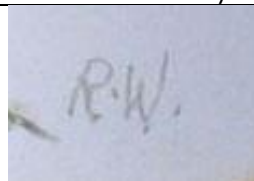
enamelled

Steve Smith signature found on enamelled Just a Thimblefull thimbles



china

Judy Oram signature - found only on china thimbles



enamelled

Rosemary Waldron signature found mainly on china thimbles



enamelled

VT found on only one example



enamelled

WM found on only one example



PG

The first mention that I can trace in the thimble literature is in 1981, in the first issue of *The Thimble Society of London* (winter 1981) - there are black and white photos and line drawings of the thimbles for the sportsmen, advertising and the Victorian designs thimbles. I am sure that Payne began painting thimbles before these sets were advertised in 1981, but I have yet to find this information. My opinion is that Payne only produced thimbles from the 1981 to 1996, so it is important to record them now - for posterity. From the dated examples illustrated below, 1982 was the most prolific year from GP. So far 1987 1989 1990 1991 and 1994 have no recorded thimbles. Please share a photo if your Payne thimbles bear one of these dates.

Thimbles Only of California, first had Payne thimbles for sale in their winter 1983 catalogue.
The Thimble Collectors Guild of Scotland, had Payne thimbles for sale in 1983-1984 and in 1995 to August.

It would be wonderful to establish whether Graham Payne, who was based in the same town as the Royal Worcester works, was Royal Worcester-trained?

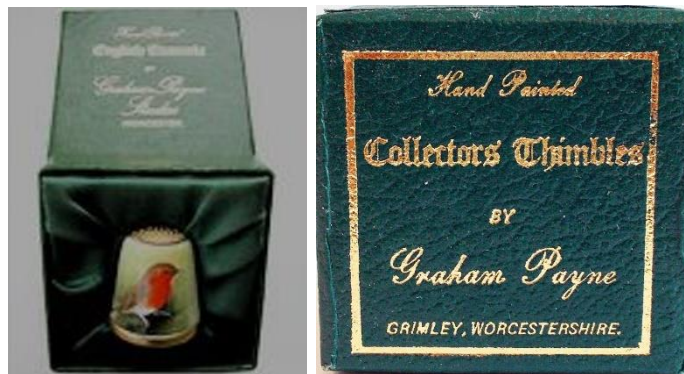
Whilst browsing thru catalogues from the early 1980s, I had a lovely surprise. A handpainted glass thimble by Graham Payne – so a new category to join his china and enamelled range. Other examples are now surfacing.

Payne also accepted commissions to create and paint personalised thimbles. This only entailed sending a photo of the subject - your home, a pet.

Payne (the name of the company) also produced handpainted china bells, pillboxes, spoons and enamelled napkin rings. Anything else?

The Thimble Society of London reported his death in 1996.

I find these thimbles so appealing that I will try and feature multiple examples of each, so that you too can enjoy his talent!



boxed example with box lid details



handpainted enameled spoons



handpainted enameled pill boxes



handpainted enameled napkin/serviette ring



handpainted enameled napkin/serviette rings, including an egg cup and box



handpainted china bell
 'Graham Payne Studios 82'
 there is a matching thimble ; see Garden birds

For other handpainted thimble topics see





Australian handpainted thimbles
British modern handpainted thimbles
Gerald Delaney handpainted thimbles
Jasper's of Yorkshire handpainted thimbles
Royal Worcester thimble painters

CHINA RANGE

The range of thimbles used for these handpainted miniatures have a distinctive shape with a slightly bulbous rim with fine fluting. These blanks were used between 1981 and 1982 when a better, straighter shape of thimble was used.

Advertisements

handpainted, signed and dated, numbered & limited to **250**
taken from 1920s advertisements

			
<u>BOVRIL</u> <i>Don't forget the Bovril</i>	<u>BOVRIL</u> <i>I think I like you better as Bovril</i>	<u>BOVRIL</u> - Alas my poor brother	<u>Turnwright's as Toffee De-Light</u>

Animals

handpainted, signed and dated

no photo	no photo	no photo	no photo	no photo	
<u>dormouse</u>	<u>fox</u>	<u>hare</u>	<u>hedgehog</u>	<u>ladybird</u>	<u>squirrel</u> bulbous rim with fine fluting

Cats

handpainted, signed and dated
see also: Others for a different group of cat thimbles

<p>no photo</p> <p><u>angora</u></p>	<p>no photo</p> <p><u>black shorthair</u></p>	
 <p><u>blue smoke Persian</u> R: <u>blue smoke</u> 'Payne 83 U.K' - 'Payne 82 Worc's' R: signed <u>RW</u> for Rosemary Waldron</p>	<p>no photo</p> <p><u>blue tabby</u></p>	
 <p><u>brown Burmese</u> 'Payne 82 Worc's'</p>	 <p><u>calico Persian</u> 'Payne 82 Worc's'</p>	 <p><u>Himalayan</u></p>
<p>no photo</p> <p><u>seal point</u></p>	 <p><u>Siamese (blue point)</u></p>	<p>no photo</p> <p><u>white longhair</u></p>

Commemoratives

handpainted, signed and dated – 1981 – 1995

in date order which shows the progression of the shape of thimble used and the type of decoration



Christmas 1981
 'Graham Payne 81'
 signed GP for Graham Payne
 numbered & limited to **100**



Christmas 1981
 'Graham Payne 81 Grimley Worcs'
 signed GP for Graham Payne
 gold-painted apex



The year of the scout
 1907-1982
 'Payne 82 Worcs'
 signed RW for Rosemary Waldron
 numbered & limited to **100**
 gold-painted apex



The year of the scout
 1907-1982
 'Payne 83'
 numbered & limited to **100**
 plain apex, different rim



Christmas 1982
 'Payne 82'
 signed RW for Rosemary Waldron
 numbered & limited to **250**
 gold-painted apex



Easter 1982
 'Payne 82'
 signed RW for Rosemary Waldron
 numbered & limited edition of 250
 gold-painted apex



Falklands liberation June 14th 1982
 'Payne 82'
 numbered & limited to **250**



The Mary Rose raised October 11th 1982
 'Payne 83'
 numbered & limited to **250**
 flat-topped thimble
 see also enamelled version



Easter 1986
 'Payne 86'
 numbered & limited to **150**



Edinburgh 1986
 'Payne 86'
 Commonwealth Games Scotland
 with Mac the Games' mascot



Mother's day '86
 'Payne 86'



King George V 1865-1936
 'Payne 86'
 signed GP for Graham Payne
 numbered & limited to **50**



Christmas 1992
 'Payne 92'
 numbered & limited to **200**
 different china blanks used



golly
 1995
 commemorate the centenary of Frances Upton's golliwog
 numbered & limited to **100**
 signed GP for Graham Payne

Garden birds and others

(using more-or-less same-shaped thimbles)

handpainted, signed and dated

see also: 'Other Birds' for a different group of bird on thimbles



blue tit
'Payne 82 Grimley Worcs'



bullfinch
'Payne 82 Worcs'
R: gold-painted apex
'Payne 82'
signed GP for Graham Payne



capercaillie
1981



cardinal
'Payne 82 Worcs'
signed RW for Rosemary Waldron



chaffinch
'Payne 82'
signed JS for John Smith



Dartford warbler
'Graham Payne Studios 82'
signed GP for Graham Payne



diamond finch.(Australia)
'Payne 82 Grimley Worcs'
signed G Payne
numbered '5'



goldcrest
'Payne 82'
signed AP
could this just be a poor signature for GP?



goldfinch - canary mule
signed G Payne



greenfinch
'Payne 82'

no photo

jay



linnet
1982

no photo

]

maggie



marsh tit
'Payne 82 Grimley, Worcs'
signed G Payne



scarlet macaw
'Payne 82'



waxwing
'Graham Payne 81 Worcs'
signed GP for Graham Payne



robin

'Payne 82 Worcs'

centre: signed SS for S Smith

[some of the robin thimbles have 'Christmas 1981']

2nd right: signed by RW for Rosemary Waldron, with fewer gold lines - 'Payne 82 Worcs'
numbered & limited to **200**

R: signed GP for Graham Payne - 'Payne 82'



wood pigeon

'Payne 82'

signed GP for Graham Payne, tho poorly executed, seems like CP



wren
 'Payne 82 Worcs's'
 signed SS for S Smith

no photo

yellow hammer

Other birds



barn owl
 limited to **50**



duck
 'Payne 88'
 gold-painted apex
 numbered & limited to **300**



duck
 'Payne 92'
 gold-painted apex



duck - flying
 'Payne 86'
 shape like his Garden birds series



old English game
silver duckwing
 'Payne 81'
 shape like his Garden birds series
 numbered & limited edition



owl
 R: **92**



owl



pheasant
'Payne 85'



pheasant
'Payne 95'
gold-painted apex



rooster
'Payne 92'
gold-painted apex
numbered & limited to **300**



shelduck
'Payne 96'
gold-painted apex



thrush (?)

Sportsmen

handpainted, signed and dated, numbered & limited to **50**

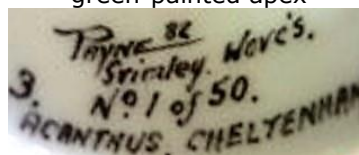


boxer c.1802

'Payne 82 Grimley Worcs'
'Acanthus, Cheltenham'

lettering refers to a gift shop Acanthus at 12 Montpelier Arcade, Cheltenham where some of these thimbles sold
may refer to this boxer being the 3rd of 4 designs?

signed RW for Rosemary Waldron
green-painted apex





cricketer



footballer



jockey c.1800
'Payne 82'
gold-painted apex

Trees

handpainted, signed and dated

no photo

beech



black mulberry
'Payne 81 Worcs'



English elm

no photo

fir

no photo

holly



Norway spruce
'Payne 84'

no photo

silver birch

no photo

sycamore

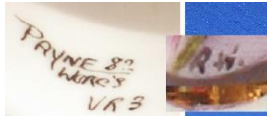
Victorian designs

handpainted, signed and dated

the bulbous rim particularly enhances these handpainted designs

the descriptions come from the 1982 The Thimble Society of London catalogue

the raised handpainted coloured dots are reminiscent of 19th century Royal Worcester thimbles



raised turquoise dots, primrose in cameo
'Payne 82 Worc's VR3'
signed RW for Rosemary Waldron



inset country scene



turquoise dots beading, black cameo, gilding



beaded rim, gilded swags, roses



beaded rim, inset painting of pheasant and foliage
'Payne 82 Worc's VR6'



Imari type pattern, red, blue and gold



beaded rim in turquoise, blue swags with poppies
this pattern wasn't featured by the Thimble Society of London – it's a later date
there is no signature just a sticky label '21 G Payne 19.984'
this could be the previous owner's label?



this sample thimble was commissioned by Heirloom Editions in the USA but never went into production.
They named it 'Royal Crown Derby'. It seems very similar to the Imari design above?

Others

handpainted, signed and dated
arranged in date order – where known
as these evolve into sets – I will separate them by topic
it is easier to follow the evolving shape of the thimble blanks used - year by year



snipe

this has been attributed to Payne but we need further information to leave this photo here



black and white kitten
'Payne 82 Worc's'



butterfly on flowers
'Payne 81 Grimley Worc's'
signed G Payne



roses
'Payne 81 Grimley Worc's'
signed G Payne



bird
'Payne 81 Grimley Worc's'
signed G Payne



bird
'Payne 81 Grimley Worc's'
signed GP for Graham Payne



brown trout
'Payne 81'



rainbow trout
'Payne 81'



adonis blue
'Payne 82'



marbled white
'Payne 82'



small copper
'Payne 82'



morning glory
'Payne 82 Worcs, England'



Charlie (jester)
L: 'Payne 82' - R: 'Payne 86'
numbered & limited to **300**



daisies
'Payne 82'
signed J Oram



forget-me-nots
'Payne 82'
signed J Oram



foxgloves
'Payne 82'
signed GP for Graham Payne



peaches
1982



peaches
'Payne 82 Worcs'
signed PG



Shakespeare's birthplace.
'Payne 82'
signed RW for Rosemary Waldron
commissioned 'for Selectaste.'



snowdrops
'Payne 82'
signed GP for Graham Payne
bulbous rim with fine fluting



windmill
'Payne 82'
signed GP for Graham Payne



Anne Hathaway's cottage
'Payne 83'
signed JS for John Smith



siamese
'Payne 83 U.K.'



William Shakespeare
1564-1616
'Payne 83'



chicken - hen
'Payne 85'
signed GP for Graham Payne



peach
'Payne 85'



woolly bear
'Payne 85'



Andy
'Payne 86'
numbered & limited to **300**
see also: Commemoratives



Binky
'Payne 86'
numbered & limited to **300**



Humphrey
'Payne 86'



Lucy
'Payne 86'



miming
'Payne 86'



Pierrette
'Payne 86'
see also: 1988 Pierret and 1996 pierrot



pig
'Payne 86'
numbered & limited to **300**
gold-painted apex



rabbit
'Payne 86'
numbered & limited to **300**
signed GP for Graham Payne
gold-painted apex



sheep
'Payne 86'
numbered & limited to **300**
signed GP for Graham Payne
gold-painted apex



skating bear
'Payne 86'



sledging teddy bear
'Payne 86'



snow bear
'Payne 86'



strawberries
'Payne 86'
signed GP for Graham Payne
bulbous rim with fine fluting



peaches
'Payne 88'
gold-painted apex



Pierret
'Payne 88'
signed GP for Graham Payne
numbered & limited to **300**
see also: 1986 Pierrette and 1996 pierrot



American robin
'Payne 92'



soldier teddy
1993
numbered & limited to **100**



apples
'Payne 96'
gold-painted apex



apples
'Payne 96'
gold-painted apex



apples
'Payne 96'
gold-painted apex



peaches
'Payne 96'
gold-painted apex



peaches
'Payne 96'
gold-painted apex
signed JS for John Smith



pears
'Payne 96'
gold-painted apex
signed JS for John Smith



pears
'Payne 96'
gold-painted apex



pears
'Payne 96'
gold-painted apex
signed JS for John Smith



apple
'Payne 96'
gold-painted apex
signed JS for John Smith



pierrot
'Payne 96'
signed GP for Graham Payne
yellow ground with gold-painted apex
see also: 1986 Pierrette and 1988 Pierret

Undated or date unknown



apple



crouching cat in a field



flowers
signed GP for Graham Payne



strawberries
yellow background



tabby



thatched cottage
gold-painted apex

ENAMELLING over BRASS THIMBLES

The range of Payne's freehand handpainted enamelled thimbles is much smaller than his china range
 I am aware of other painters painting enamelled thimbles for the Graham Payne Studio
 there are several enamelled thimbles signed by JS for John Smith which are all dated 1983
 painter's initials SS for S Smith, with the occasional RW for Rosemary Waldron.
 I am not familiar with British birds – please help me name the birds I have left unnamed at the end.

for other enamelled thimbles topics see:

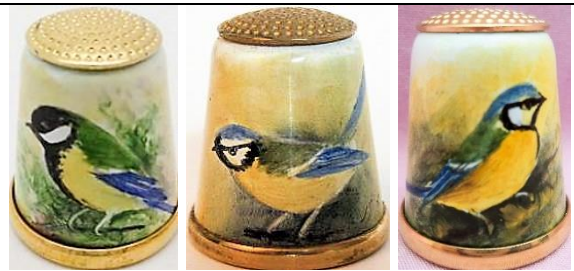
- British modern enamelled thimbles
- Cornish Enamels thimbles
- Crummles enamelled thimbles
- Peter Swingler handpainted thimbles

Birds

handpainted, signed and dated



barn owl
 'Payne 83 Worcs'



blue tit
 1983; R: 'Payne 84', signed JS for John Smith
 R: bird facing right



blue tit
 'Payne 87 Worcs'
 commissioned 'for Acanthus Cheltenham'
 signed GP



bullfinch
 'Payne 83'



chaffinch
 L: birds facing left 'Hand painted Graham Payne Studios Worcester 83'
 L: signed by J Smith
 C: signed G Payne and SS for Steve Smith
 R: bird facing right 'Hand painted Graham Payne Studios Worcester'



flycatcher
 'Payne 83 Worcs'
 signed SS for Steve Smith



goldfinch

'Hand painted Graham Payne Studios Worcester 81'
signed SS for S Smith



great tit

'Payne 82 Worcs'
signed JS for John Smith



kingfisher

1983 and 1984

L: 'Payne 83 Worcs'

C L: undated but all are signed JS for John Smith
C R: 'Hand painted Graham Payne Studios Worcester'

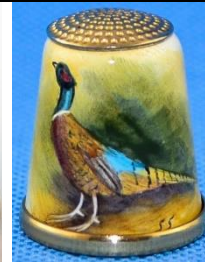
2nd R: 'Payne 84'

R: SS for Steve Smith



lapwing

'Payne 82 Worcs'
signed JS for John Smith



pheasant

R: 'Hand painted Graham Payne Studios Worcester', signed SS for S Smith
numbered & limited to **750**

commissioned by *The Thimble Collectors Guild* in October 1983 entitled 'The Cock Pheasant'



b&w photo shows the lettering 'Pheasant' which those above don't have in the same position



robin

L: bird facing right 'Payne 83' - next: bird facing right 'Payne 82 Worcs' - R: bird facing right 'Payne 82 Worcs' all signed JS for John Smith with no brass rim



stonechat
'Payne 82 Worcs'
signed JS for John Smith



warbler
signed SS for S Smith



willow warbler
'Payne 82 Worcs'
signed SS for S Smith



woodpecker
'Payne 83 Worcs'



woodpecker
'Payne 83 Worcs'



wren - i

L: bird facing left 'Hand painted Graham Payne Studios Worcester' signed SS for S Smith
next: bird facing right 'Payne 83 Worcs' signed JS for John Smith
next: bird facing left 'Payne 82 Worcs'
R: 'Payne 83 Worcs'



wren - ii
bird is on a branch
'G. Payne' under the bird name
'Payne 81'
'Acanthus Cheltenham' lettered inside
refers to a gift shop Acanthus at 12 Montpelier Arcade,
Cheltenham where some of these thimbles sold



'Hand painted Graham Payne Studios Worcester'



'Payne 83 Worcs'



black-throated ...
signed JS for John Smith



'Hand painted Graham Payne Studios Worcester'



signed JS for John Smith



'Payne 83 Worcs'
signed JS for John Smith

Commemoratives

handpainted, signed and dated



Christmas 1981
1981

numbered & limited to **100**

L: signed GP for Graham Payne - star over the stable

R: signed Graham Payne



The Mary Rose raised October 11th 1982

'Payne 83 Worcs'

numbered & limited to **250**

see also china version



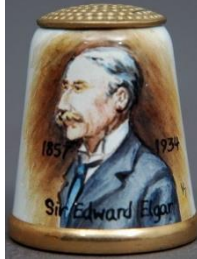
Christmas 1983

1983

'Hand painted Graham Payne Studios Worcester'
 numbered & limited to **250**
 signed JS for John Smith
 top R: silver grey Santa sack

this thimble was offered for sale by *The Thimble Collectors Guild* in November 1983, entitled 'Santa's Noggin'
 bottom thimbles show a different painter signed WM

it is the first time I have found this - the same Graham Payne thimble design handpainted by two different painters



1984

Sir Edward Elgar 1857-1934

'Hand painted Graham Payne Studios Worcester'
 signed JS for John Smith
 numbered & limited to **100**

this thimble was offered for sale by *The Thimble Collectors Guild* in January 1984



1984

Worcester Cathedral 900th anniversary

'Payne 84'

numbered & limited to **150**

Dogs

handpainted, signed and dated



beagle
'Payne 83'
signed JS for John Smith

no photo

black labrador



cocker spaniel
'Payne 83'
signed JS for John Smith

no photo

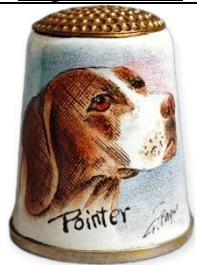
dachshund



English setter



Irish setter



pointer
'Payne 82'
signed G Payne Worcester

no photo

poodle

no photo

St Bernard

Others

handpainted, signed and dated
arranged in date order – where known



bird's nest
'Payne 81 Worcester'
signed G Payne



sickener
'Payne 81 Worcester'
signed G Payne



Inez Eijkelenboom
Zoals zij altijd in onze gedachten zal voortleven.
Rechts ziet u haar originele visitekaartje, met de naam
Mrs. Oaktree, zoals zij zich in Engeland presenteerde.



Mrs. Oaktree

this is an example of a commissioned thimble

'Payne 82'

numbered & limited to **100**

Mrs Oaktree was a Dutch thimble dealer and collector
whose name was Inez Eijkelenboom (1930-2005)



fuchsia
'Payne 82 Worcs'



brimstone
'Payne 82'



small copper
'Payne 82'
no brass rim



bee
'Payne 83 Worcs'
signed SS for S Smith



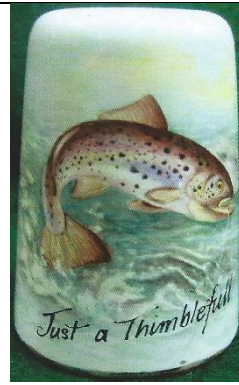
frog
'Payne 83 Worcs'
signed JS for John Smith



hare
'Payne 83 Worcs'



Just a thimblefull
pheasant
'Graham Payne Studios 83 Worcester'
signed S Smith



Just a thimblefull
trout
'Graham Payne Studios 83 Worcester'
no brass rim



ladybird
1983
signed SS for S Smith



Oakham Church and Castle
'Payne 83 Worcs'



otter
'Hand painted Graham Payne Studios '83 Worcester''
signed JS for John Smith



primrose
'Payne '83 Worcs'



red & blue macaw S. America
'Payne '81 Worcester'
signed G.P



stoat
'Payne '81 Worcester'
signed Graham Payne



thistles
'Payne 83 Worcs'
signed RW for Rosemary Waldron



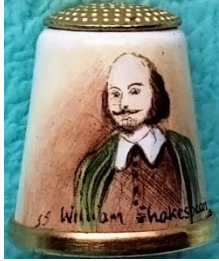
Shakespeare's birthplace
'Payne 83 Worcs'



orange flower
1983



'Payne 83 Worcs'
signed SS for S Smith



William Shakespeare
'Payne 83 Worcs'
signed SS for S Smith



apples
'Payne 84'

Undated or date unknown



apples
'Hand painted Graham Payne Studios Worcester'
signed JS for John Smith



daffodils
'Hand painted Graham Payne Studios Worcester'



pansy
'Hand painted Graham Payne Studios Worcester'
not dated



rose
signed by VI



squirrel



teddy
'Hand painted Graham Payne Studios Worcester'



teddy 'Nº. 1'

'Hand painted Graham Payne Studios Worcester'
not dated



teddy 'Nº. 6'

'Hand painted Graham Payne Studios Worcester'
not dated
some examples are missing the numbering inside

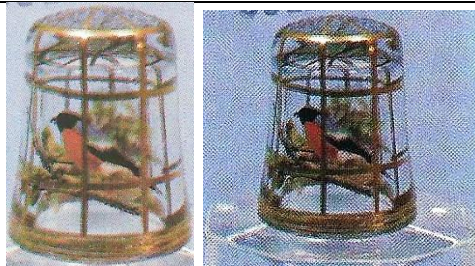


dreams

unsigned – is this from Graham Payne?
Is there a GP for Graham Payne signature in this blue sprig?
'Hand painted in the U.K.'
numbered & limited to **250**

the Harlequin design matches the logo of Cecile Dreesmann
which features in her book Een vingerhoedje... A thimble full... Dreams, vol. 3 (1983)
there is an accompanying egg-shaped thimble holder
the eggs were limited to **50**

GLASS THIMBLES



birdcage

bird painted on the inside of the glass
gold of cage has been painted on the outside!

R: showing glass base

when a consignment of these delicate glass thimbles arrived smashed in the US for sale, Payne never made more
of these true masterpiece thimbles – they were US\$50 back in 1983



yellow bird

signed GP for Graham Payne under the branch to R of photo

References

Mabel Rogers *My favourite convention find: Graham Payne thimbleful.* TCI Bulletin fall 2014

Contributors

Wendi Aguiar | Marta Valencia Betran | Joanna Blackie-Sew Many Bits | Pawel Brzyski | Elaine Graveston
Linda Heggs | William Isbister | Anne Jones | Friedy Kamp | Doreen Lilley-Pricklepin | Mary Agnes Mosher
Terry Neilson | Kathleen Rastall | Pat Rich | Mabel Rogers | Linda Samaripa | Wolf-Dieter Scholz | Irene Schwall
Gai Sdao | Jean Shoup-Thimbles Only | Ian Spriggs | Jean Taylor | Barbra Wallace | Krystyna Zagajewska

This listing of Graham Payne handpainted thimbles does not purport to be complete or accurate in all aspects.
Rather it invites comment and contribution to add to our knowledge. My thanks to the contributors.

EMAIL thimbleselect@bigpond.com TO SHARE YOUR KNOWLEDGE

© **Sue Gowan**
July 2013